

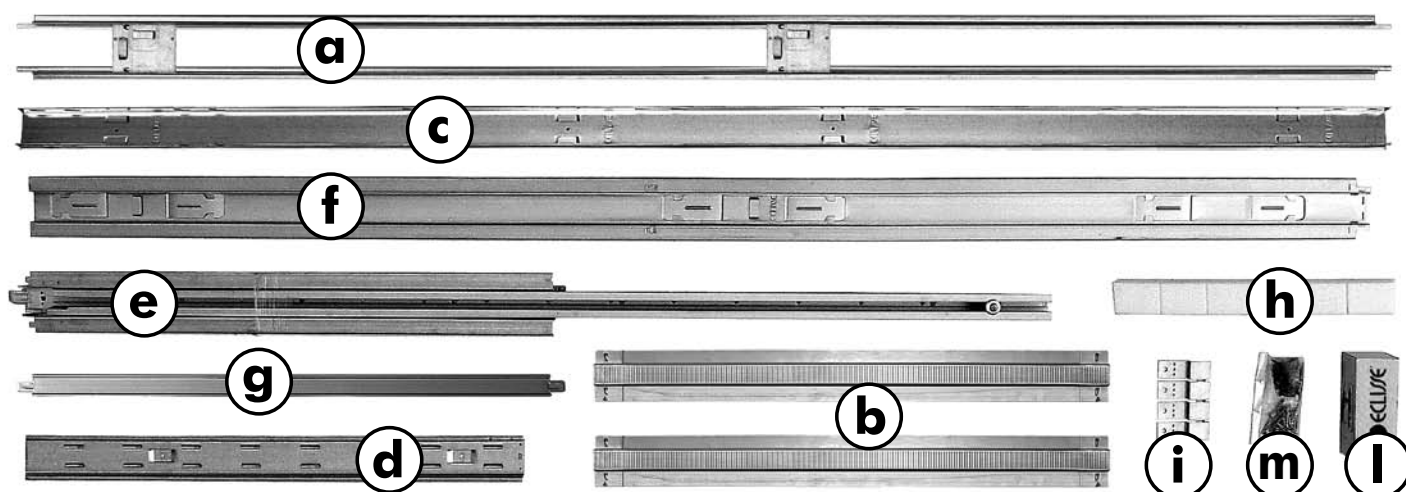


ECLIPSE®
Sliding Door Systems

- ASSEMBLY AND INSTALLATION -

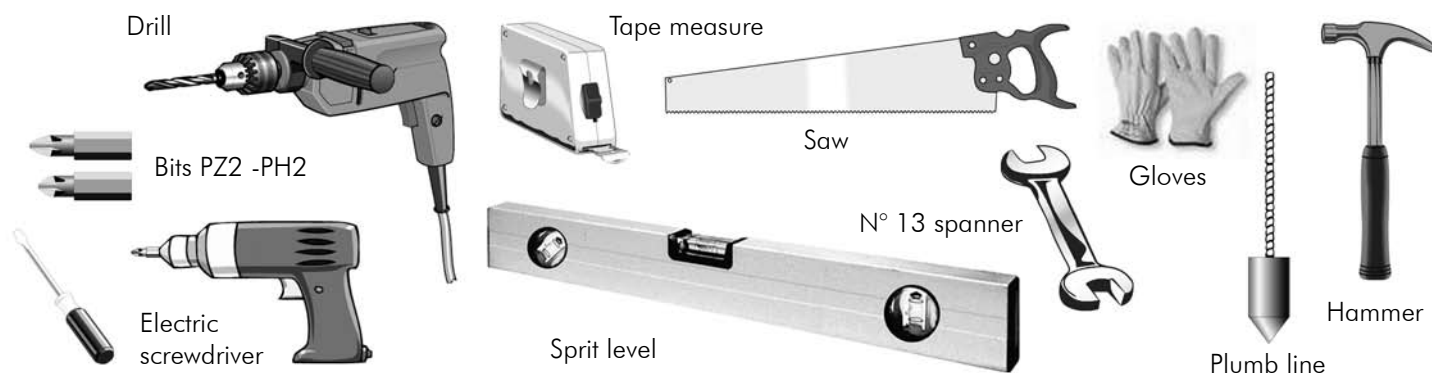
Most Important! The FD30 fire rated framework must be assembled to suit a 100 mm finished wall thickness (75 mm studwork)

METAL FRAMEWORK-KIT CONTENTS

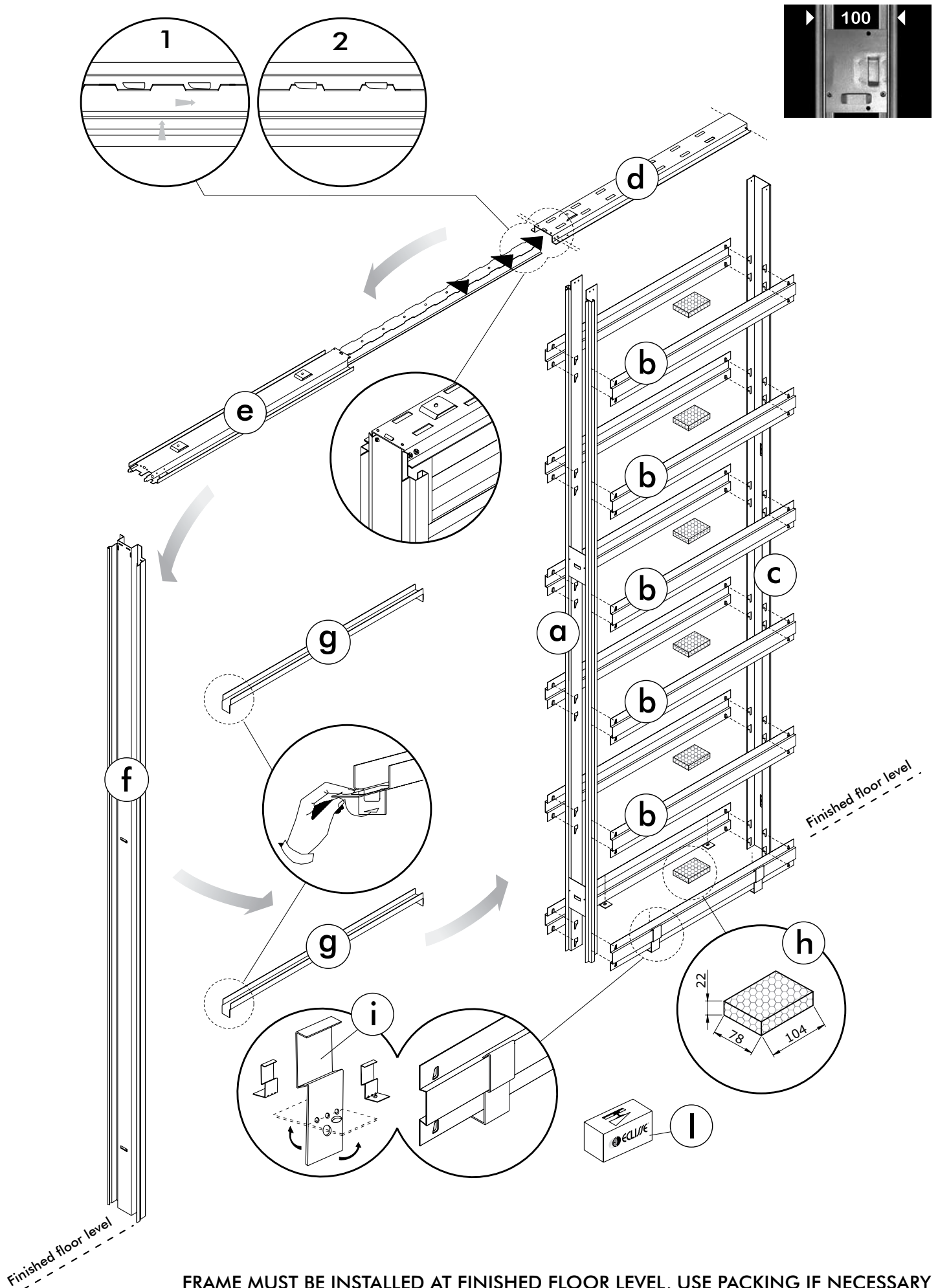


- | | | |
|--------------------------------------|-----------------------------------|--|
| a Central vertical | f Metal door post | m Pack of screws: 4,2 x 9,5 (9 pcs) - 3,9 x 19 (55 pcs) |
| b Pocket horizontals (12 pcs) | g Bracers (2 pcs) | |
| c Rear vertical | h Polystyrene spacers | |
| d Pocket header | i Pocket-to-floor brackets | |
| e Top beam with track | l Door mounting kit | |

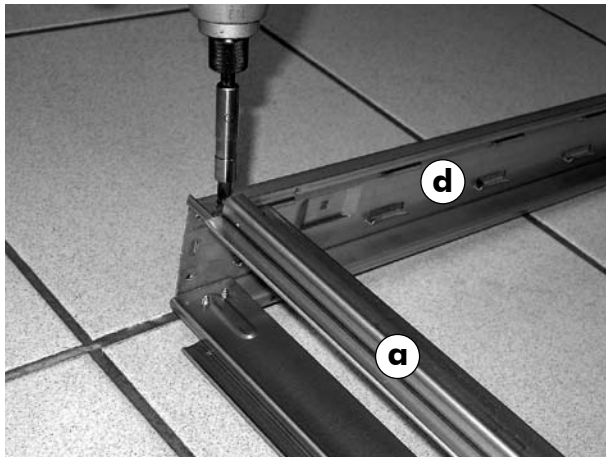
Tools required



100 mm Finished wall thickness assembly instructions

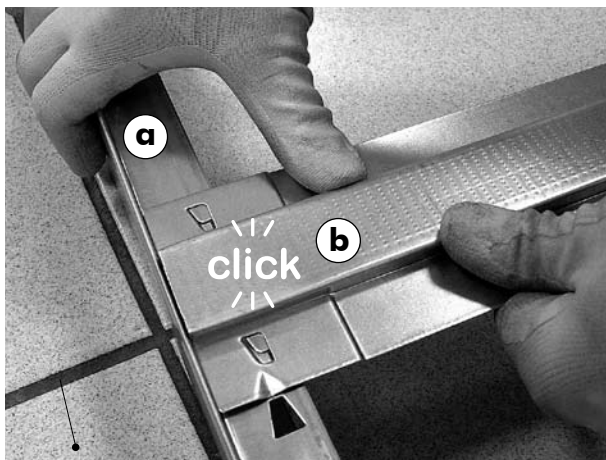
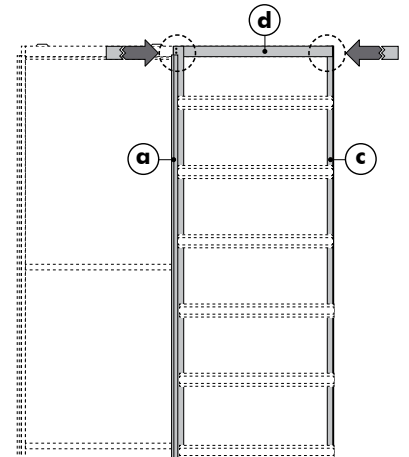


100 mm Finished wall thickness assembly instructions



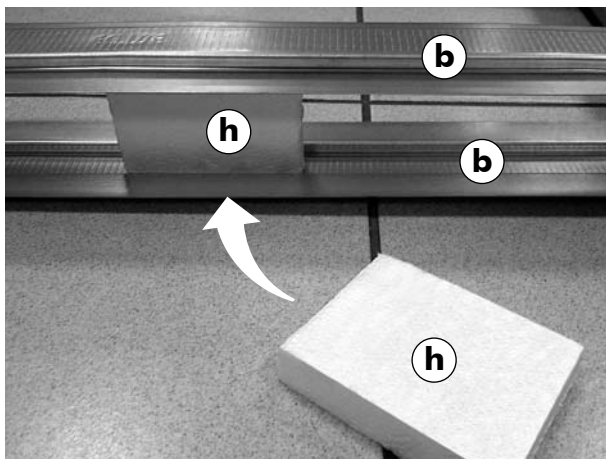
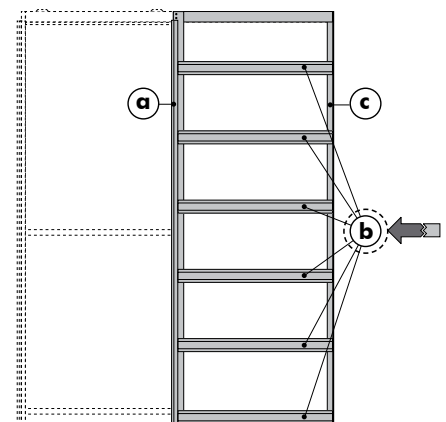
STEP 1 ➡

Assemble the pocket header (**d**) to the central verticals (**a**) and rear verticals (**c**) using 4.2 x 9.5 mm screws (**m**).



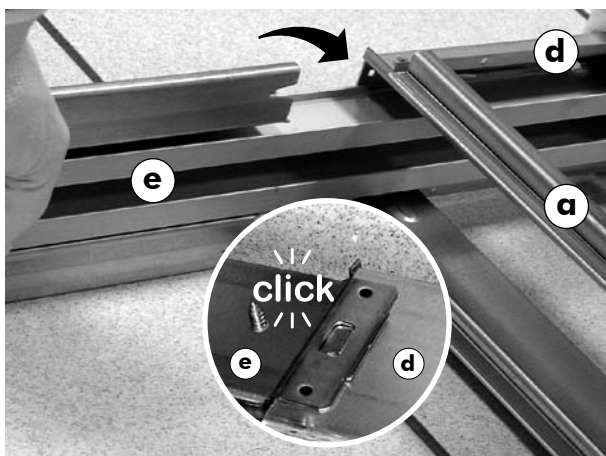
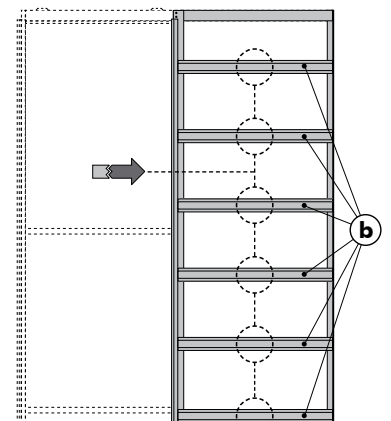
STEP 2 ➡

Assemble both sides of the pocket using the horizontals (**b**) locking them into position securely on central verticals (**a**) and rear verticals (**c**) at the pre-determined positions. Make sure they are firmly locked in place.



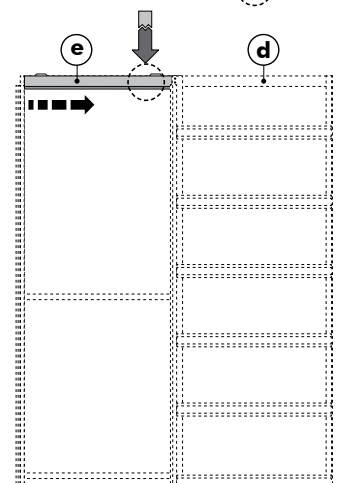
STEP 3 ➡

Insert the polystyrene spacers (**h**) in between the horizontals (**b**).

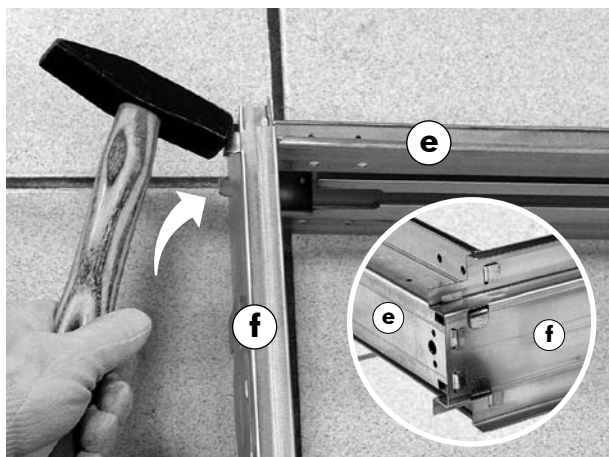


STEP 4 ➡

Insert the top beam with track (**e**) into the pocket header (**d**) using the bayonet system. When it "clicks" into place, secure with 4.2 x 9.5 mm screws.

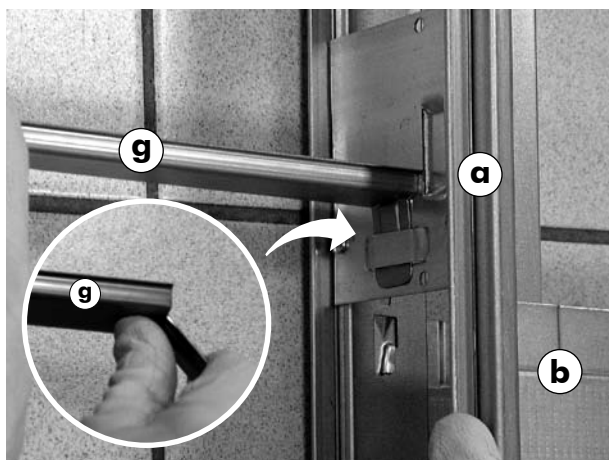
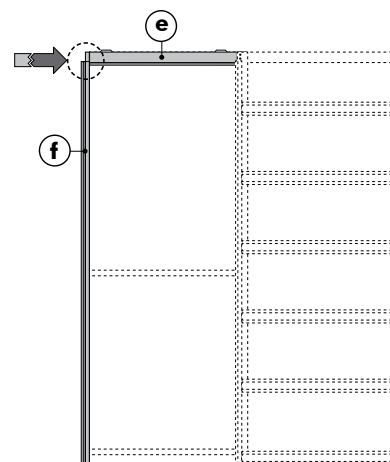


100 mm Finished wall thickness assembly instructions



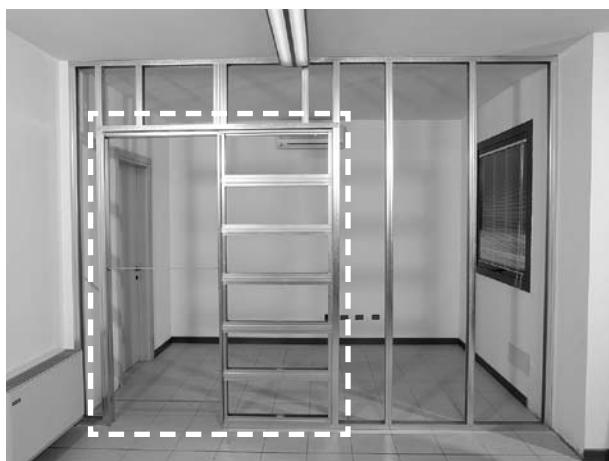
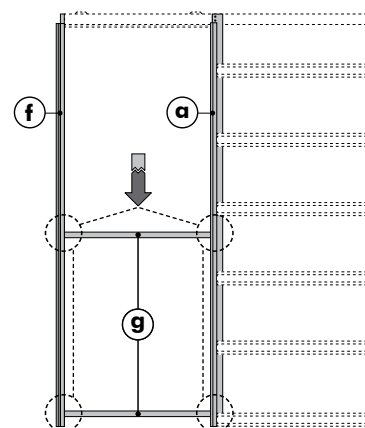
STEP 5 ➡

Insert the metal tongues at the end of the top beam **(e)** into the slots at the top of the metal doorpost. Bend the metal tongues using the hammer.



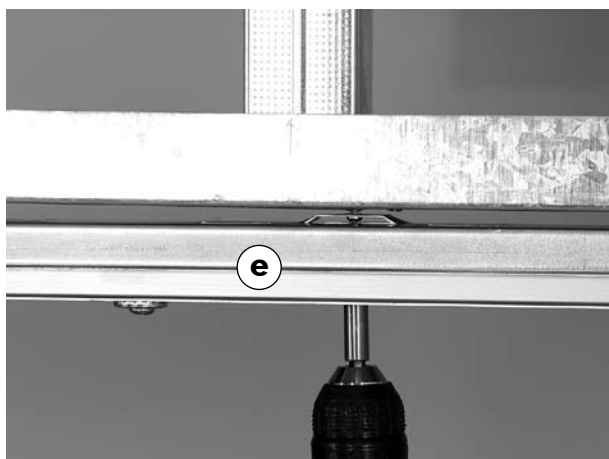
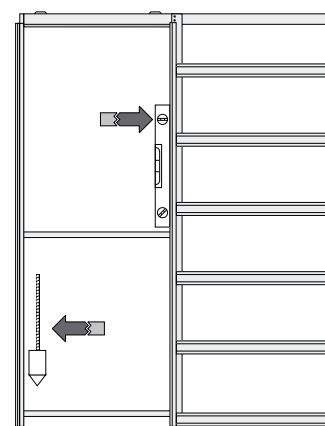
STEP 6 ➡

Bend the ends of the bracers **(g)** backwards through 90° and locate in the positions on vertical **(a)** and doorpost **(f)**.



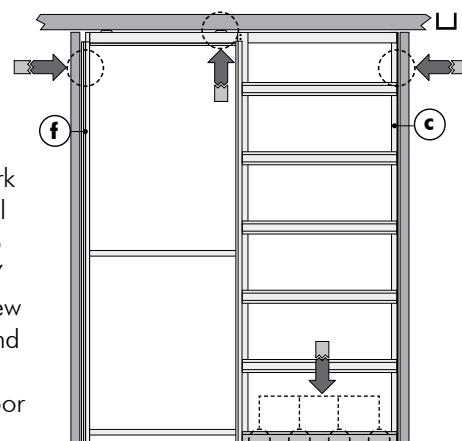
STEP 7 ➡

Insert the assembled framework into your prepared studwork (metal or wood) making sure it is installed at finished floor level, plumb and perfectly horizontal.



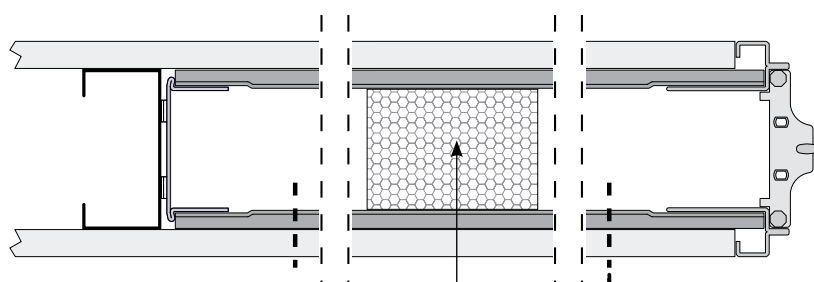
STEP 8 ➡

Attach the frame to the studwork by screwing through the vertical **(c)**, metal doorpost **(f)** and top beam with track **(e)** (use ONLY the larger holes so that the screw head goes through the track and locates the top beam). Screw the internal pocket-to-floor brackets to the floor.



FIXING THE PLASTERBOARD TO THE FRAME

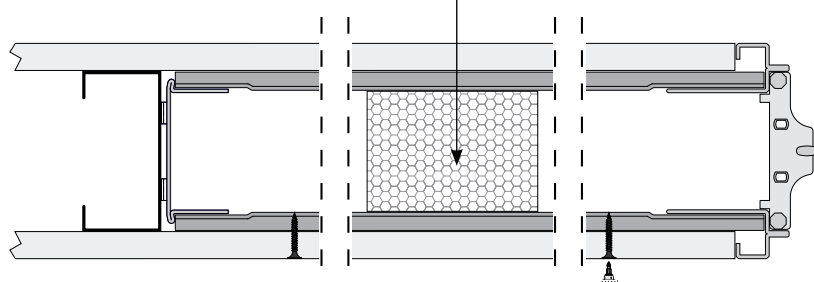
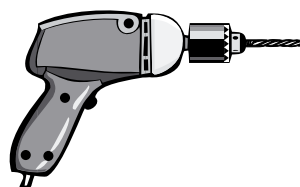
The plasterboard can be attached at any time after the frame is installed



Temporary polystyrene spacers
to be removed after screwing
on plasterboard

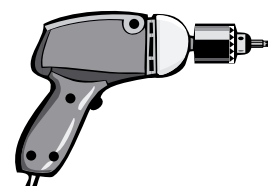
PHASE 1

The frame is made to accept 12,5 mm plasterboard on each side. Using a 2 mm drill, drill appropriate holes through the plasterboard and Pocket horizontals **(b)** (2 to each side as shown)



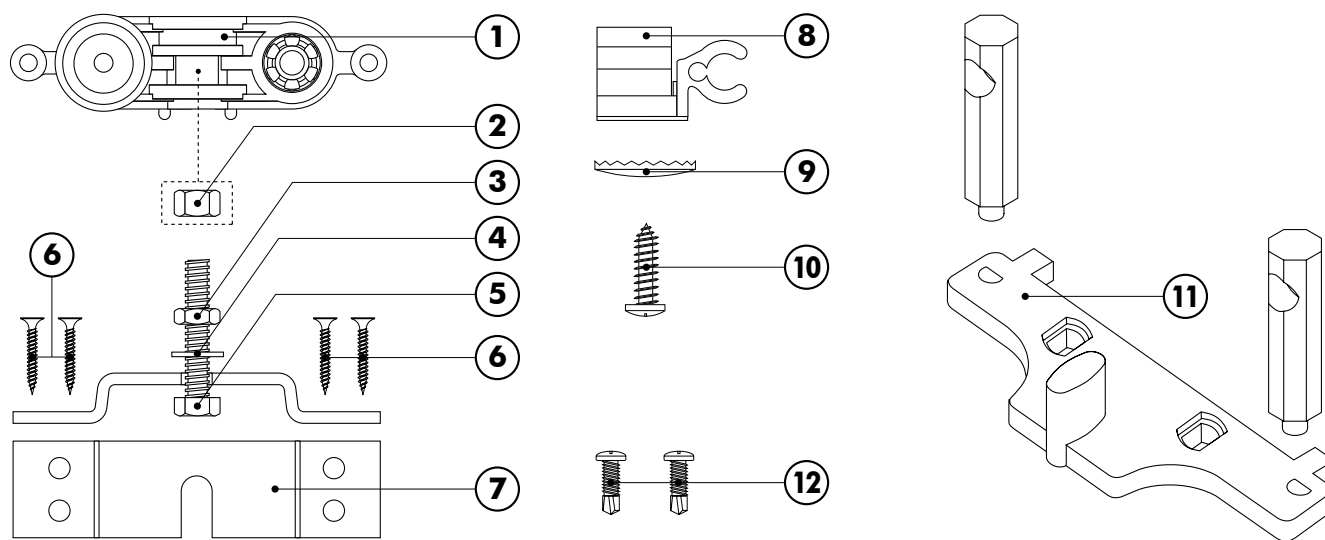
PHASE 2

Using ONLY the black 3,5 x 19 mm screws provided, attached the plasterboard to the frame. If you use any other screws you will be responsible for any scratches on the door!



INSTALLING THE DOOR

DOOR MOUNTING KIT 1 - Contents

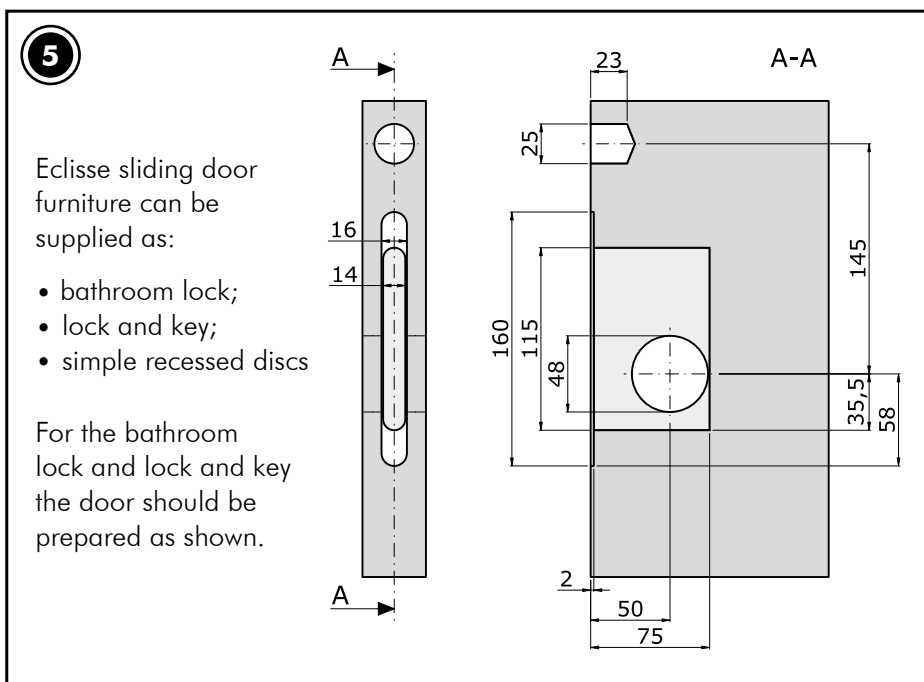
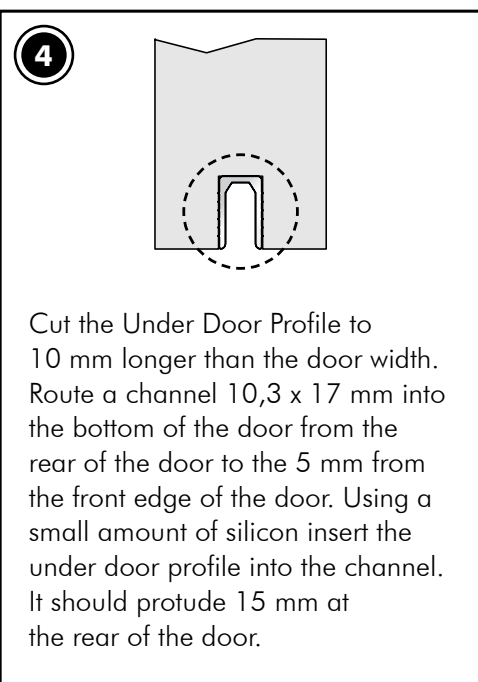
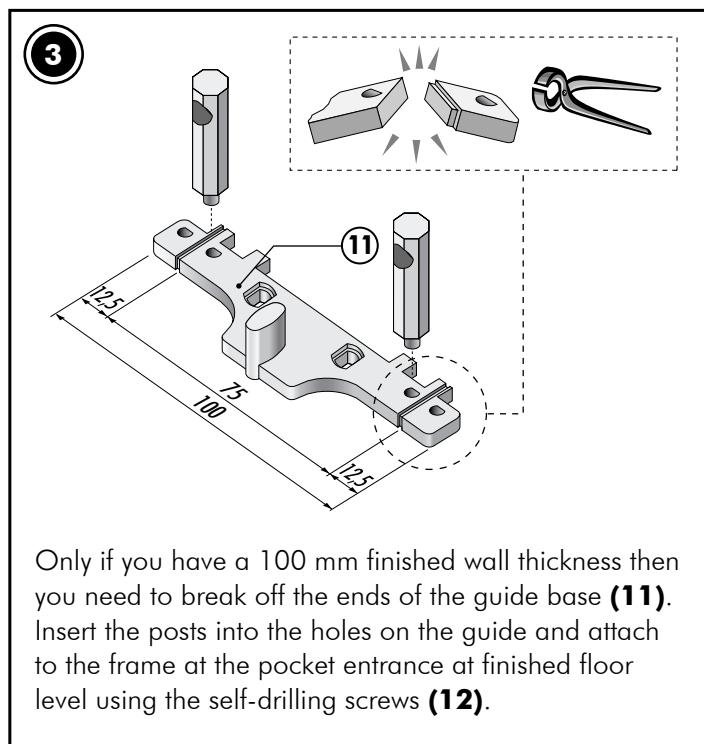
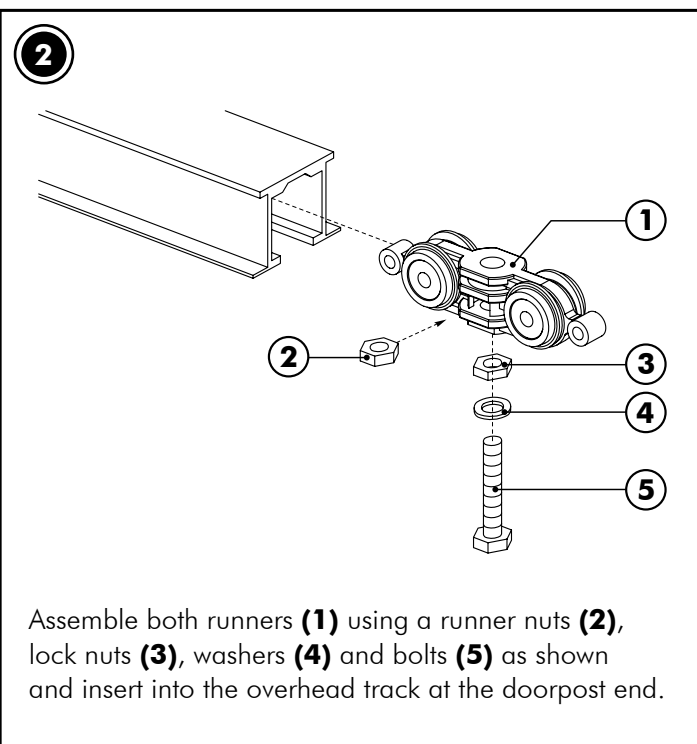
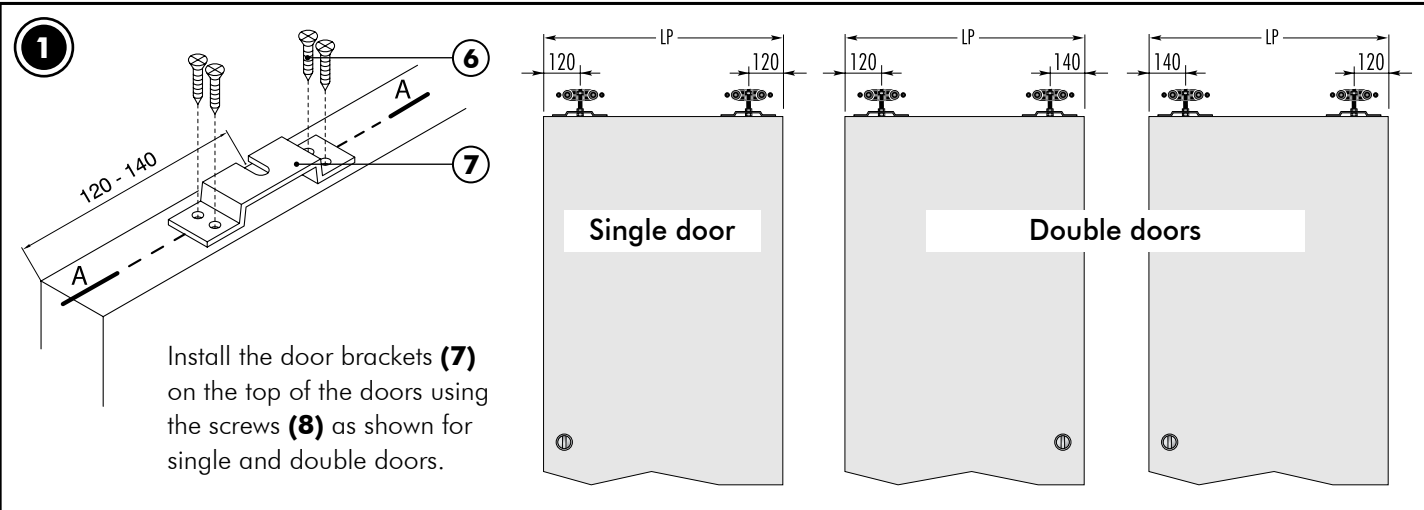


- ① Runners (2 pcs)
- ② Runner nut (2 pcs) M8
- ③ Lock nut (2 pcs) M8
- ④ Washer (2 pcs)

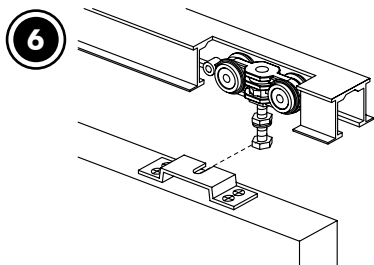
- ⑤ Bolt (2 pcs)
- ⑥ Screws (8 pcs)
- ⑦ Door bracket (2 pcs)
- ⑧ Adjustable stop (1 pc)

- ⑨ Lock washer (1 pc)
- ⑩ Screw 6 x 30 (1 pc)
- ⑪ Guide with posts (1 pc)
- ⑫ Self-drilling screws (2 pcs)

INSTALING THE DOOR - PHASE:

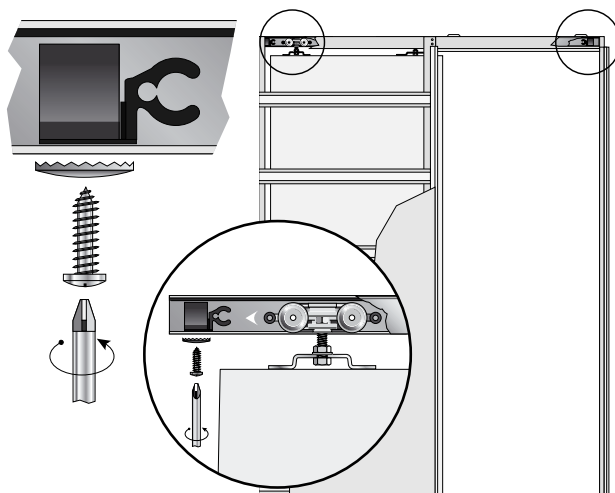


INSTALING THE DOOR - PHASE:



Hook the door onto the runners using the door brackets fixed to the top of the door. Insert the under door profile over the door guide and slide into the pocket. There is one adjustable stop already installed 70 mm from

the rear of the track. This can be adjusted as required even after the plasterboard is fixed thanks to the extractable track. The door can be adjusted to slide completely back into the pocket however, should you decide to do this we cannot be held responsible for any damage to persons or property as a consequence of this adjustment. Position the second stop at the front of the track and adjust as required.



INSTALLING THE JAMBS AND DOORPOST

Please see the FD30 fire rated door kit installation instructions to install the fire rated jambs and doorpost