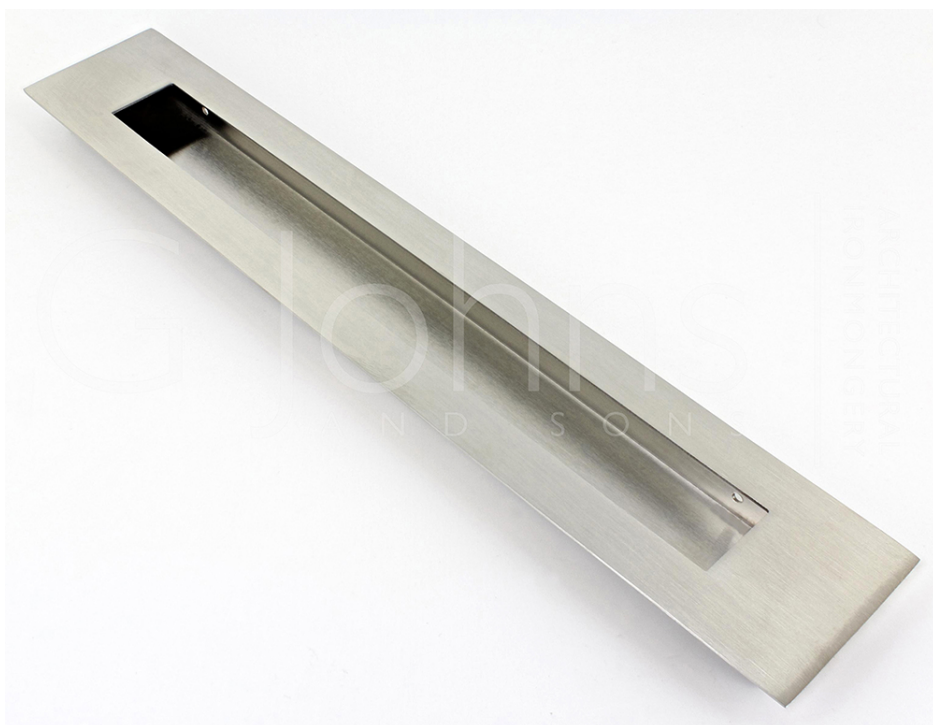


---

## Large Rectangular Design Flush Pull Handle For Sliding Doors - 320mm Long x 55mm Wide - Satin Stainless Steel

### Product Images

---

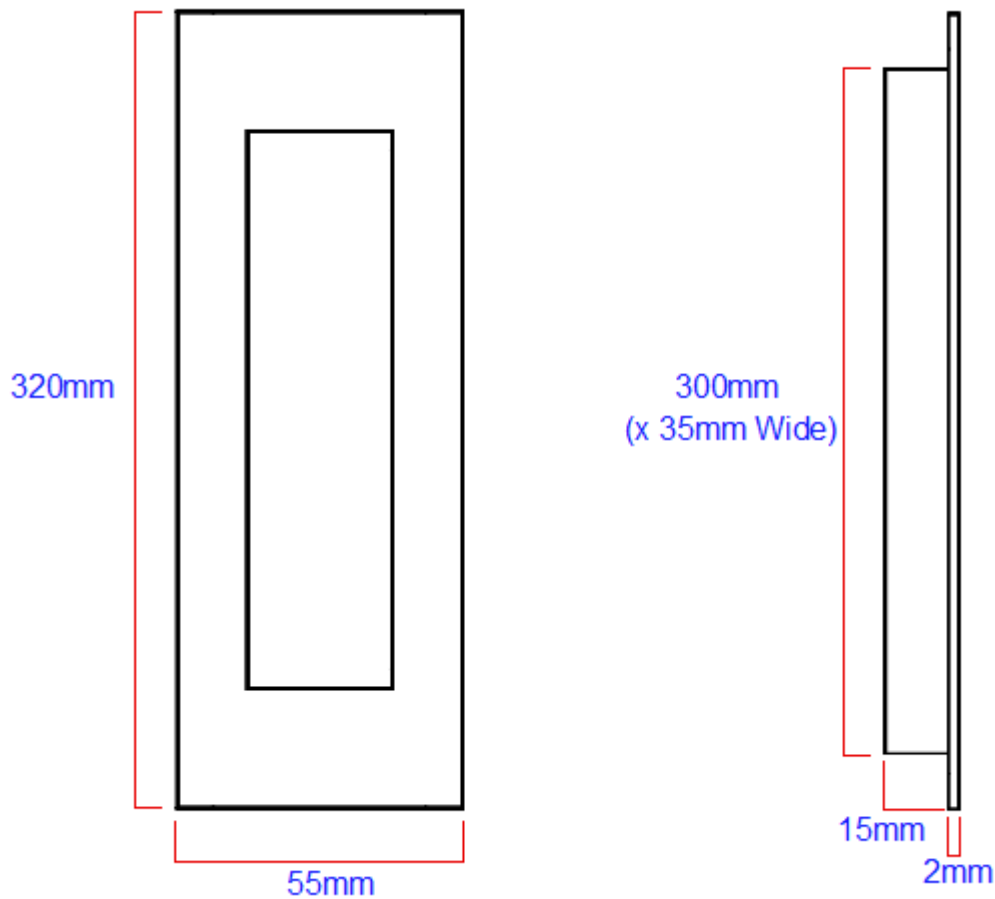


### Description

---

- Extra large design rectangular shape flush fitting, inset pull handle for sliding doors.
- Ideal for tall doors this handle measures 320mm long x 55mm wide.
- Made from stainless steel this item is a satin (brushed) finish.
- This item has to be morticed (cut) into the door to allow it to sit fit flush.
- Suitable for use on full height sliding doors, wardrobe doors and cupboard doors.
- Sleek minimal look thanks to discreet fixings. - (This item is fixed via wood screws from inside the recess).

### Size Details



Item Code	Height	Width	Recess Depth	Recess Height	Recess Width	Backplate Thickness
40914.1	320mm	55mm	15mm	300mm	35mm	2mm

## Base Material

- Made from stainless steel.

## Finish Details

- Satin stainless steel - a grey colour with very slight golden undertones. The raw stainless steel has been satinised "brushed" to produce visible brush marks in the surface of the item.

## Fixings

- This handle is fitted via 2 x wood screws inside the recess of the handle.
- Screws are supplied with this item.

## Usage

- Suitable for internal use
- To fit this handle completely flush a minimum door thickness of 20mm is required.

## Unit Of Sale

- This item is sold individually - (Each)

Products in this set

---



40914.1 - Contemporary Rectangular Design Flush Pull Handle - Satin Stainless Steel - 320mm x 55mm - Each