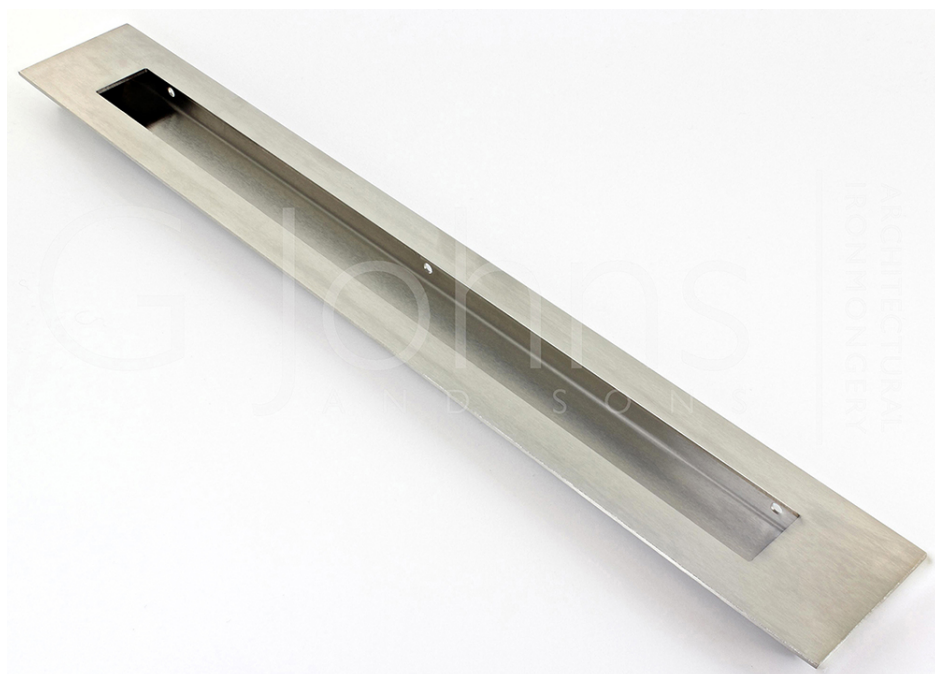

Extra Large Rectangular Design Flush Pull Handle For Sliding Doors - 600mm Long x 55mm Wide - Satin Stainless Steel

Product Images

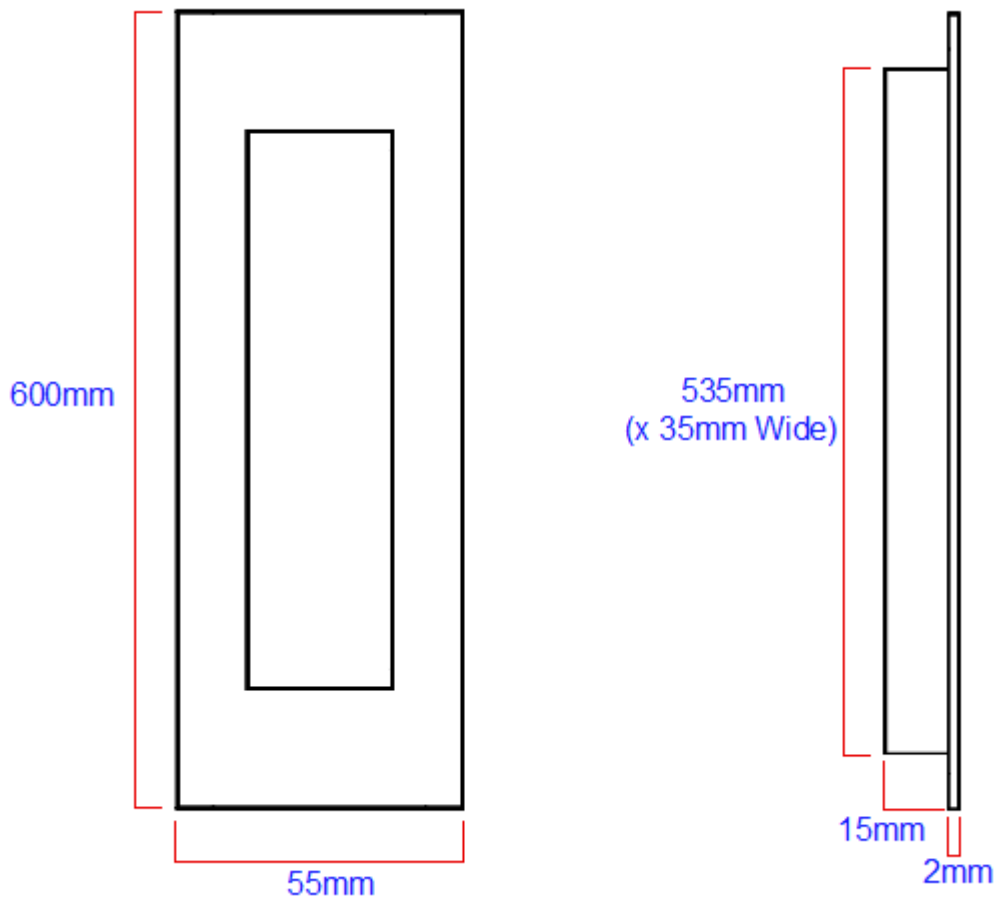




Description

- Extra large design rectangular shape flush fitting, inset pull handle for sliding doors.
- Ideal for tall doors this handle measures 600mm long x 55mm wide.
- Made from stainless steel this item is a satin (brushed) finish.
- This item has to be morticed (cut) into the door to allow it to sit fit flush.
- Suitable for use on full height sliding doors, wardrobe doors and cupboard doors.
- Sleek minimal look thanks to discreet fixings. - (This item is fixed via wood screws from inside the recess).

Size Details



Item Code	Height	Width	Recess Depth	Recess Height	Recess Width	Backplate Thickness
40935.1	600mm	55mm	15mm	535mm	35mm	2mm

Base Material

- Made from stainless steel.

Finish Details

- Satin stainless steel.

Fixings

- This handle is fitted via 2 x wood screws inside the recess of the handle.
- Screws are supplied with this item.

Usage

- Suitable for internal use
- To fit this handle completely flush a minimum door thickness of 20mm is required.

Unit Of Sale

- This item is sold individually - (Each)

Products in this set



40935.1 - Contemporary Rectangular Design Flush Pull Handle - Satin Stainless Steel - 600mm x 55mm - Each