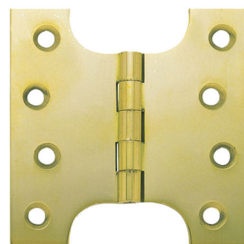
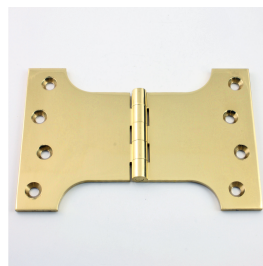

Parliament Projection Hinges - Polished Brass (Lacquered) - 102mm x 102mm / 102mm x 127mm / 102mm x 152mm

Product Images



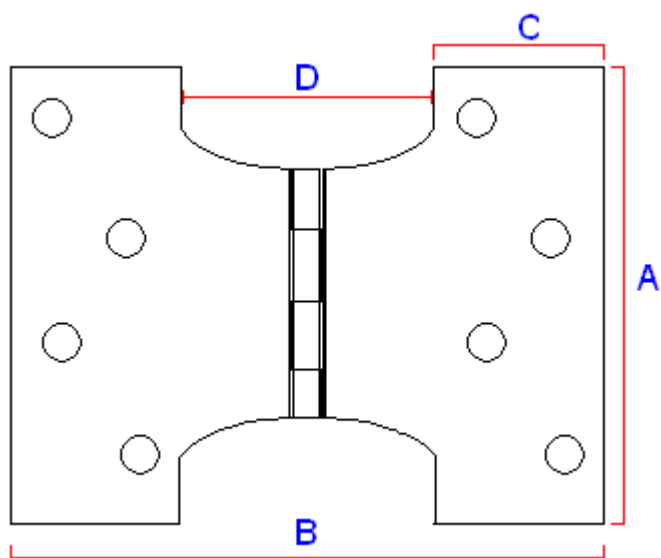
Description

- Parliament projection hinges ideal for use on double doors
- Allows a door to fold back on itself through 180 degrees
- Suitable for internal or external doors

Finish

- Polished brass

Dimensions



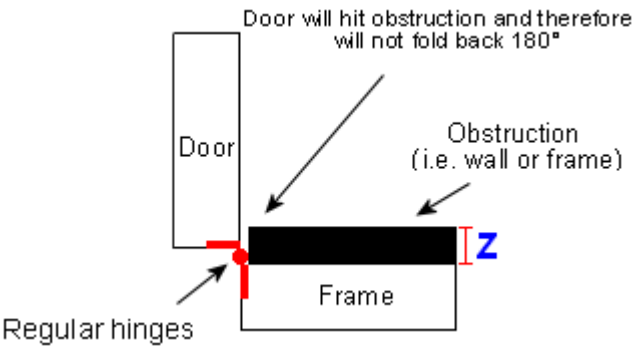
Available in 3 Sizes

- 15011.1 - (102mm x 102mm x 4mm)
- 15011.2 - (102mm x 127mm x 4mm)
- 15011.3 - (102mm x 152mm x 4mm)

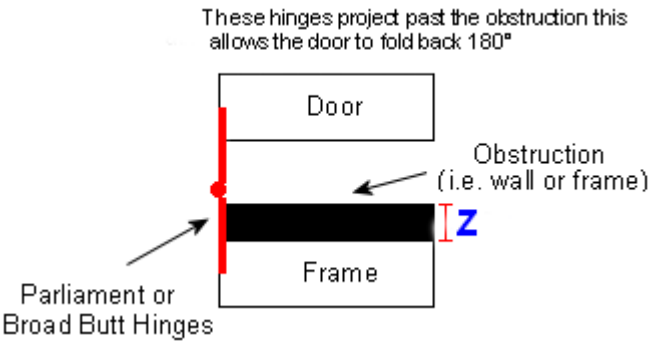
	15011.1	15011.2	15011.3	Dimension On Diagram
Height	102mm	102mm	102mm	A
Width	102mm	127mm	152mm	B
Leaf Width	26mm	26mm	26mm	C
Projection given	50mm	76mm	102mm	D
Thickness	4mm	4mm	4mm	N/A

Important Info Before You Buy

- Parliament hinges are used to help project or "throw" a door past an obstruction so it can fold back on itself through 180 degrees



- Suitable for wooden doors
- Base material is brass highly polished with lacquer protection
- Hinges have short knuckle and no washers, therefore only suitable for light - medium weight doors
- Sold and priced in pairs and come supplied with screws



Products in this set



15011.1 - Parliament Projection Hinges For French Doors - Polished Brass (Lacquered) - 102mm x 50mm x 102mm - Pair



15011.2 - Parliament Projection Hinges For French Doors - Polished Brass (Lacquered) - 102mm x 75mm x 127mm - Pair



15011.3 - Parliament Projection Hinges For French Doors - Polished Brass (Lacquered) - 102mm x 100mm x 152mm - Pair