

---

## Architrave Free Adjustable Sliding Pocket Kit - For Glass Single Doors- To Suit Doors 626mm - 1300mm Wide And Up To 2700mm High

### Product Images

---



### Short Description

---

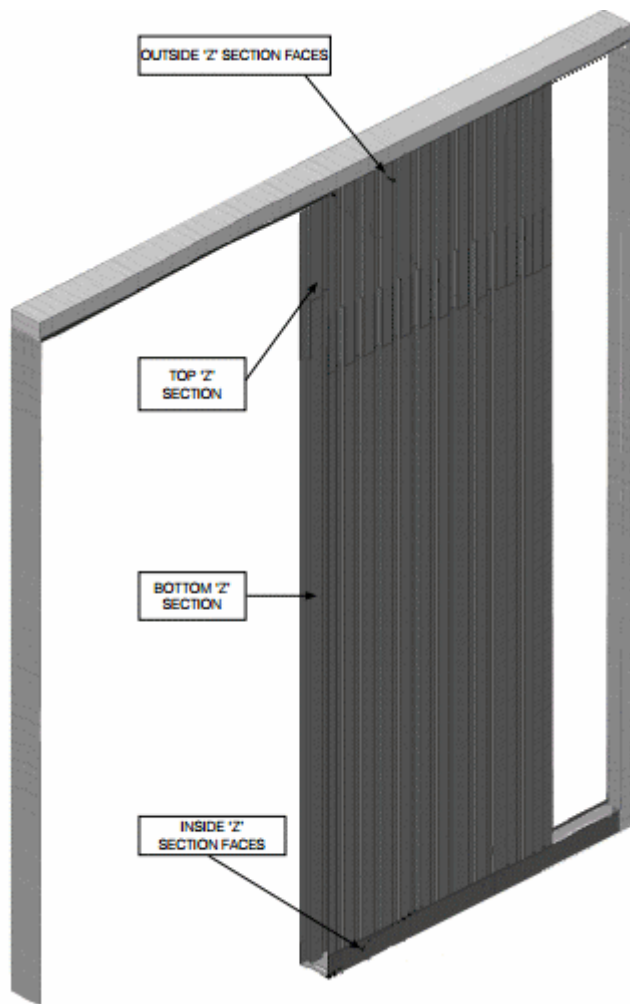
- Please note this item is made to order, lead times are usually 10-14 days.
- Please double check your requirements before ordering this product, **this item cannot be returned to us.**
- Architrave free sliding single pocket door kits for wide and tall doors.
- Our adjustable sliding pocket door kits from are suitable for single doors between 626mm - 1300mm wide and up to 2700mm high.
- Each kit allows you to create a single disappearing sliding door.

- This unique adjustable system can be used with both wide and tall single doors.
- Simple and quick installation.
- Suits glass panels between 8mm - 12mm thick.
- Max door weight 80kg.
- Supplied with crosspieces, cassette edge covers, door brushes and seals.

## Description

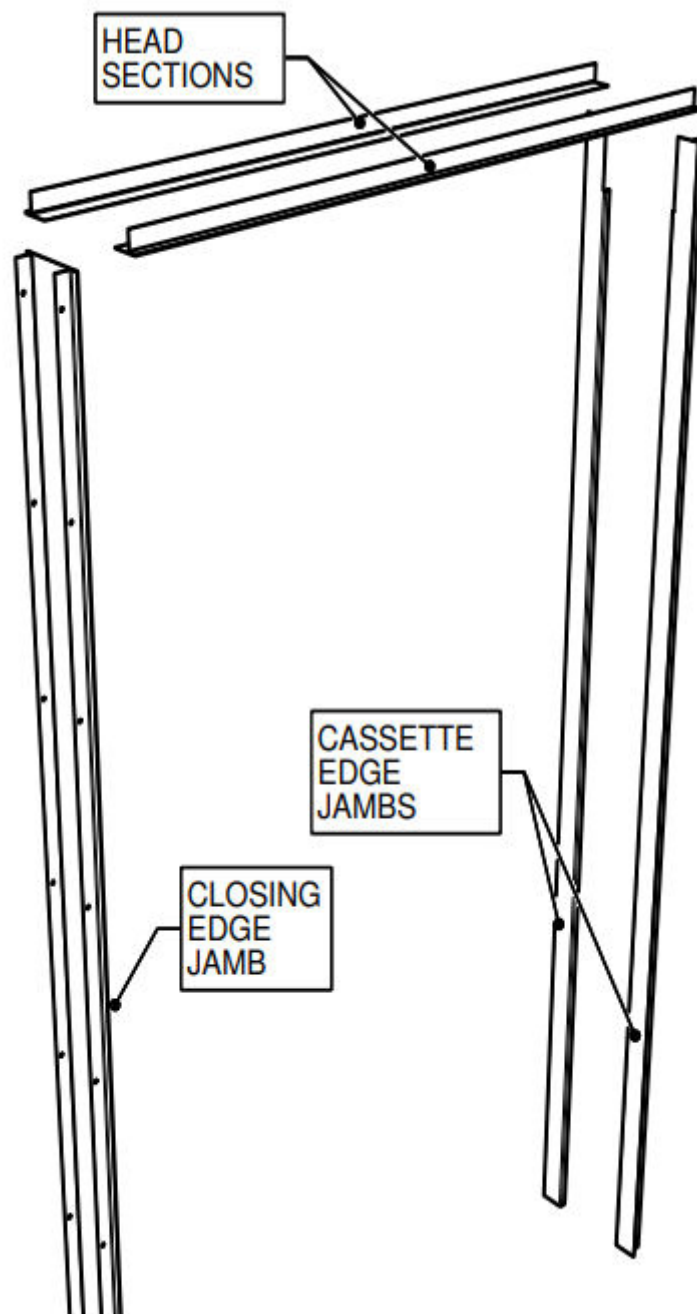
---

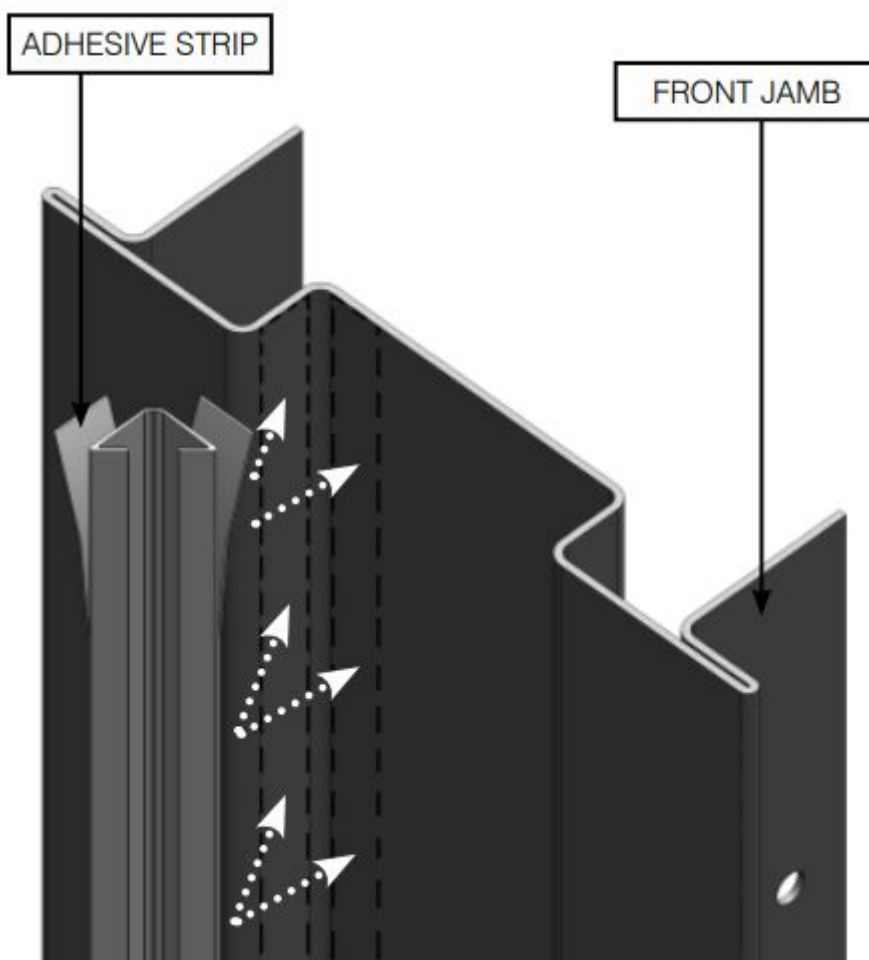
- Please note this item is made to order, lead times are usually 10-14 days.
- Please double check your requirements before ordering this product, **this item cannot be returned to us.**
- Our adjustable single architrave free adjustable sliding pocket door gear systems for glass have been designed to provide an unrivalled size and design flexibility with modular kits that are available in two heights and two widths as standard.
- For installations where a minimal aesthetic is required or where the door opening needs to be frameless (i.e. without architrave), the kits provide a range of heavy duty steel door linings. These sections enable the skim coat to be applied and the whole frame is then painted / finished to blend in with the surrounding wall.
- Our adjustable single door kits include top fixed door brackets and poplar door linings as well as all the structural components for creating your single sliding pocket door.
- The adjustable cassette is constructed from exceptionally rigid Z profiles that interlock together to create a unit that is height adjustable. The benefit in this is that unlike other systems that only accept one exact leaf size the pocket door kits can accommodate on-site variations or changes without having to send it back and order a different kit (or having to try to modify it on site)
- The Z section is exceptionally easy to affix the plasterboard to. included within the box are the right self drilling screws to get a good fix and ensure the screws don't penetrate to deep and risk scratching the door face There is also enough surface area should you wish to bond your plasterboard onto the frame.
- Quality components include Delrin covered ball bearing rollers. White powder coated anodised aluminium track. Pre formed door Poplar door linings. Soft brush seals. Pre cut plasterboard profiles for frameless wall openings. All of these are specifically designed and manufactured to make installation easy and gives years of trouble free performance
- Unlike most other pocket door solutions available today, these systems are adjustable in both height and width making them ideal for use with non standard door sizes including extra wide and tall doors.
- Allows an interior door to slide and disappear into "pockets" within the wall cavity.
- Each set includes all the main components needed to install a long lasting, smooth running single glass sliding doors including an adjustable steel cassette pocket which is used to create the wall cavity's or "pocket" for the door to slide into.
- This high quality sliding door gear is suitable for residential and commercial applications. The unique design allows glass doors between 8mm-12mm thick to be installed within a finished wall thickness of 125mm.
- Supplied as a kit to create the pocket, which can be fully fitted in under 60 minutes by a skilled installer.
- Suitable for doors up to 80kg in weight.
- Suitable for use with glass doors only - **glass door not included.**



## Supplied Complete With Metal Jamb Kit

- This adjustable architrave free sliding pocket door kit is supplied **with a metal jamb kit, Including a metal closing jamb section**





## Accessories

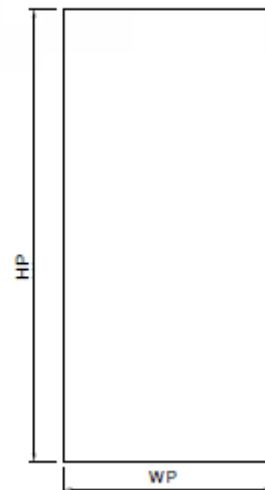
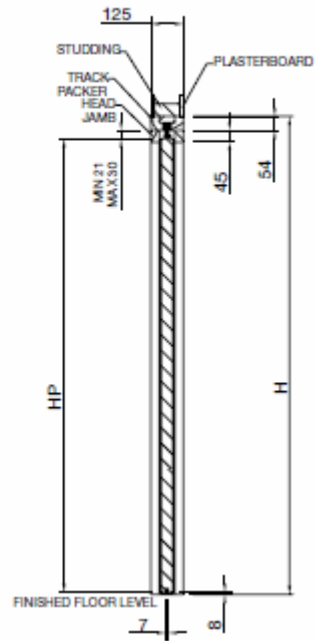
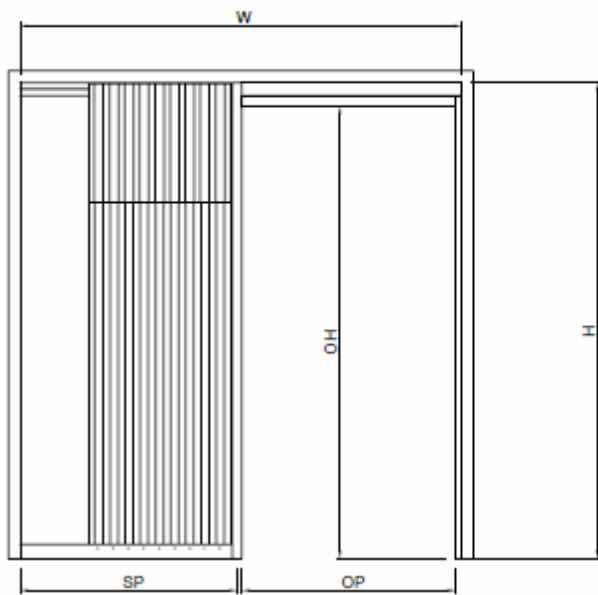
- Please note the self close and soft close mechanisms cannot be used with the architrave free door kits.

## Features & Benefits

- Adjustable pocket cassette system is ideal for use with non standard door sizes.
- Kits available for doors 626mm - 1300mm wide.
- Kits available for doors 1900mm - 2700mm high.
- Space saving - sliding doors help create up to 8% more living more space within a property
- Easy access
- Quiet operation
- Easy installation
- Economical

## Dimensions - Frame Sizes & Door Kit Sizes Available

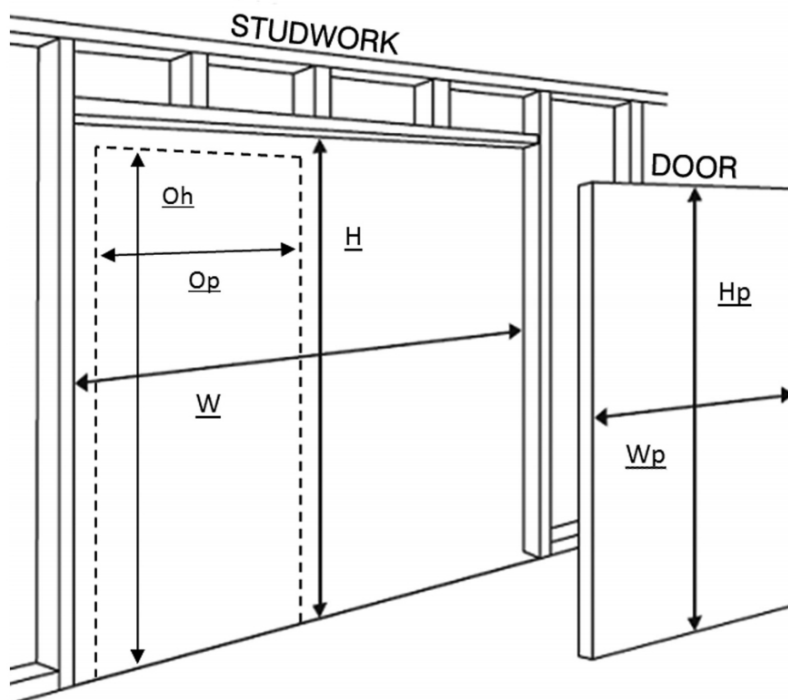
- The necessary wall aperture dimensions for the single pocket door kits can be derived from the calculations and elevations shown below.



Item Code	Door Width Style	Door Height Style	Door Width (WP)	Max Door Height (HP)	Finished Wall Thickness
41115.1	Standard	Standard	626mm - 926mm	2100mm	125mm
41115.2	Intermediate	Standard	926mm - 1300mm	2100mm	125mm
41115.3	Standard	Tall Door	626mm - 926mm	2700mm	125mm
41115.4	Intermediate	Tall Door	926mm x 1300mm	2700mm	125mm

- Please note plasterboard is not provided with this kit and must be purchased separately.
- Please note glass doors are not supplied and must be purchased separately.

Abbreviations
$W$ = STUDWORK WIDTH
$H$ = STUDWORK HEIGHT
$Op$ = DOOR OPENING WIDTH
$Oh$ = DOOR OPENING HEIGHT
$Wp$ = DOOR WIDTH
$Hp$ = DOOR HEIGHT



**To calculate studwork width and height from known door dimensions:**

- Studwork width ( $W$ ) =  $2 \times \text{Door width } (Wp) - 17\text{mm}$
- Studwork height ( $H$ ) =  $\text{Door height } (Hp) + 91\text{mm}$

**To calculate door size from known studwork dimensions:**

- Door width ( $Wp$ ) =  $\text{Studwork width } (W) - 18.5\text{mm Divided By } 2$
- Door height ( $Hp$ ) =  $\text{Studwork height } (H) - 45\text{mm}$

**To calculate door size from known door opening dimensions:**

- Door width ( $Wp$ ) =  $\text{Door opening width } (Op) + 27\text{mm}$
- Door height ( $Hp$ ) =  $\text{Door opening height } (Oh) - 47\text{mm}$

**To calculate door opening width and height from known door dimensions:**

- Door opening width ( $Op$ ) =  $\text{Door width } (Wp) - 27\text{mm}$
- Door opening height ( $Oh$ ) =  $\text{Door height } (Hp) + 46\text{mm}$

## Drilling Template & Dimensions Required For The Glass

- 4 x 14.5mm diameter holes required.

## Items Included Within The Architrave Free Pocket Sliding Door Kit

- Adjustable metal cassette to create the "pocket"
- Screws to fix plasterboard to metal frame - **(Plasterboard not supplied)**
- Roller bearing door hanger kit for glass doors.

- Timber lining kit - (door jamb kit) including brush seals and rubber bumpers.

## Products in this set

---



**41115.1 - Architrave Free Adjustable Sliding Single Pocket Door For Glass - 125mm Finished Wall - 626mm - 926mm Wide & Up To 2100mm High**



**41115.2 - Architrave Free Adjustable Sliding Single Pocket Door For Glass - 125mm Finished Wall - 926mm - 1300mm Wide & Up To 2100mm High**



**41115.3 - Architrave Free Adjustable Sliding Single Pocket Door For Glass - 125mm Finished Wall - 626mm - 926mm Wide & Up To 2700mm High**



**41115.4 - Architrave Free Adjustable Sliding Single Pocket Door For Glass - 125mm Finished Wall - 926mm - 1300mm Wide & Up To 2700mm High**