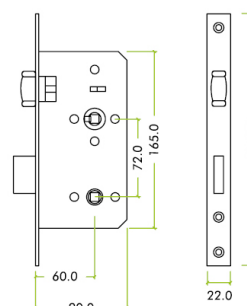
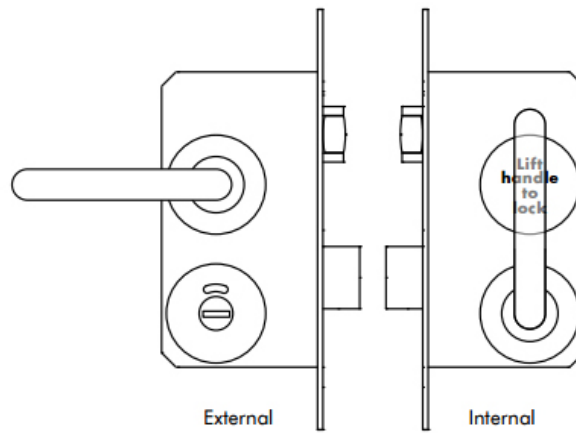


## Satin Stainless Steel Disabled Toilet Handle & Lock Set

### Product Images





### Short Description

---

- Lift handle to lock toilet door set.
- Made from grade 304 satin stainless steel.
- Supplied with roller ball mortice lock set, return to door handles, indicator and lift handle to lock sign.

### Description

---

## Features

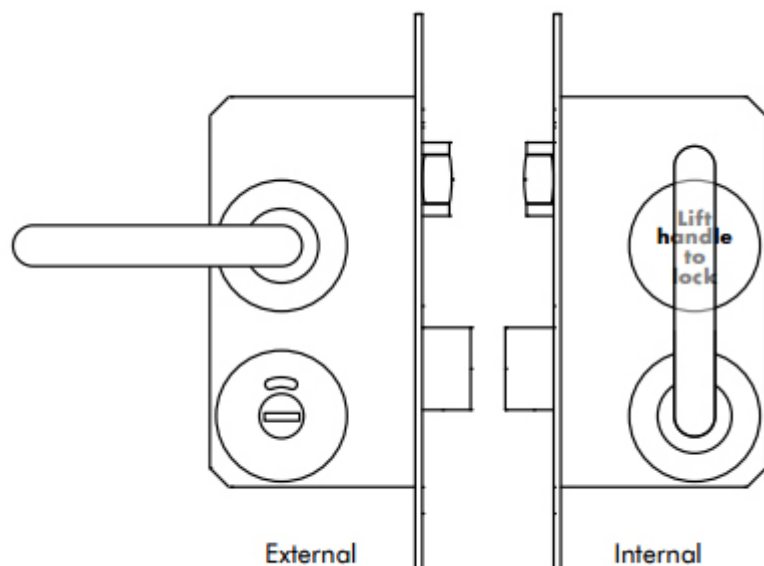
- This disabled toilet lock comes in a complete set (as shown in the photographs)
- Designed to comply with [Approved Doc M](#), DDA & BS8300
- Lock Case Satin stainless steel forend & strike plate with a Roller bolt latch (less likely to cause injuries or damage to clothing than a normal latch bolt)
- This toilet door handle is made from grade 304 stainless steel with a satin finish (brushed finish)
- Separate deadbolt with 78mm centres and 60mm backset
- Furniture 19mm diameter stainless steel levers
- Lettering black letters on stainless steel background "lift handle to lock"

### External Access:

- The roller latch bolt of the toilet door handle is operated externally with one-half of the unsprung lever set; this releases the roller latch bolt as normal
- Underneath the lever is the release & indicator; this operates in the same manner as bathroom-type coin releases

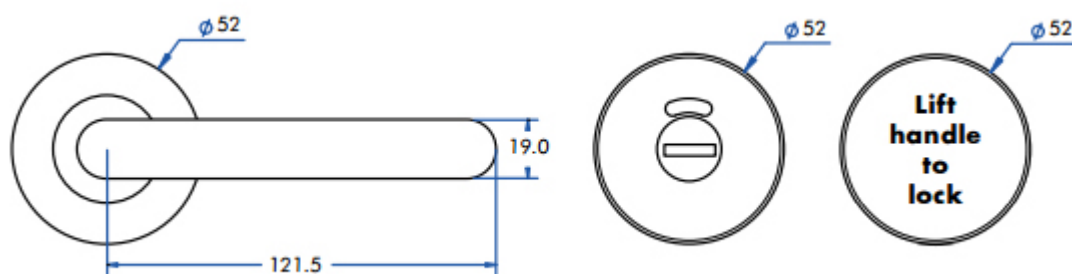
### Internal Access:

- The internal side of the lever set will be configured such that the latch bolt is blanked off with an engraved covered escutcheon
- The deadbolt features a second lever handle, and by throwing the handle up & extends the deadbolt & locks the door
- By turning the handle down the deadbolt is withdrawn, further downward action of the lever withdraws the roller latch bolt, allowing exit

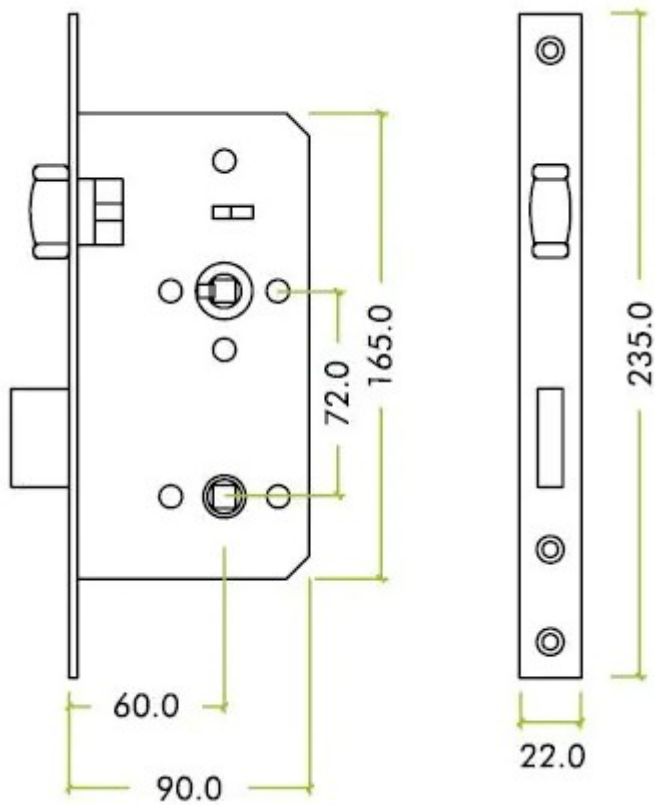


## Lever Handle Dimensions

- 52mm diameter rose
- 121.5mm lever length
- 19mm diameter return to the door handle
- Disabled door handle includes bathroom indicator and lift-to-lock sign - 52mm diameter



## Roller Ball Lock Case Dimensions:



## Includes:

- 2 x Satin stainless steel lever handles (unsprung)
- 2 x 8mm spindles
- 1 x Satin stainless steel release indicator
- 1 x Satin stainless steel - "Lift Handle To Lock" escutcheon and sign

## Products in this set



41209.1 - Accessible Toilet Lock & Handle Set For Disabled WC Toilets - Satin Stainless Steel