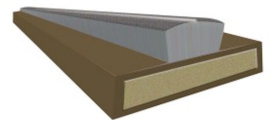
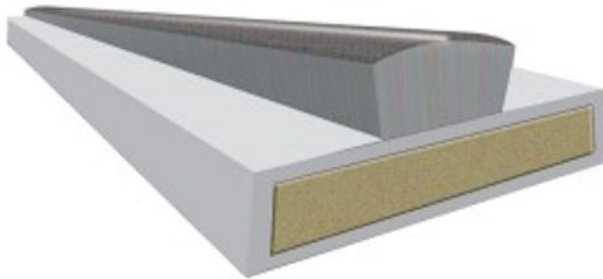

Intumescent Brush Strip - Fire and Smoke Seal - 10mm x 4mm x 2100mm - For 30 Minute Fire Rated Doors

Product Images



Description

Minimum order 10 lengths

- Intumescent brush seal fire and smoke strips.
- 10mm wide strip suitable for use on half hour 30 minute fire rated doors.
- Fitted with a 5mm deep nylon pile brush.
- In the event of a fire, the fire seal expands (intumesces) to many times its original volume and seal the gap around the door to provide a safe and effective barrier against the passage of fire, smoke and hot gases.
- The smoke seals provide a permanent barrier to smoke - particularly important as smoke fumes travel faster and further than the fire itself. They also have acoustic and thermal applications.
- The fire & smoke brush seal is passed and certified for use in single and double door assemblies (single and double action), and can provide fire and smoke resistance in excess of half an hour.
- All brush seals are supplied with a self adhesive backing tape as standard to facilitate quick and easy fitting. The seals are available in a choice of colours to suit your requirements or blend with decor.
- This product has been tested to a 30 minute fire rating to BS 476 part 22 & 31.1.

- Smoke seals tested to EN1634-3
- Tested to 100,000 open/close cycles.
- NHBC Type Approval.

Dimensions

- 10mm x 4mm x 2100mm

Fire Rating

- 30 minute fire rated suitable for use on FD30S half hour fire doors.
- **Please note** You should always check with the manufacturer of the fire door being installed, to see what size and type of fire seal the door was originally tested and passed with before installing this product.

Finishes Available

- White Pvc casing with grey brush seal
- Brown Pvc casing with grey brush seal
- Black Pvc casing with grey brush seal

Applications

- Intumescent fire seal
- Smoke seal

Standards This Product Has Been Tested To

- BS476 Part 22 & 31.1
- Smoke Seal to 100,000 cycle test
- NHBC Type Approval
- CERTIFIRE Approval

Products in this set
