

Bolt Fix Pull Handle

£0.00

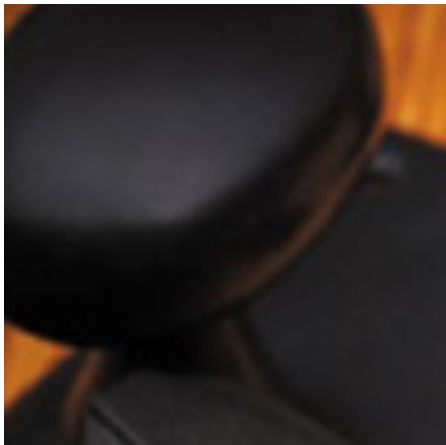
exc VAT: £0.00

Product Images



Short Description

- 1682 Traditional English made Pull Handle ideal for use on entrance, lobby and corridor doors . Bolt Fix Pull Handle.
- Dimensions 9" x 1", 12" x 1", 18" x 1", 24" x 1".
- To co-ordinate with this pull handle we can also supply matching push plates and kick plates.
- This range is made to order in the UK please allow 6 weeks for delivery. Please contact us for prices and further information.
- Available in 27 luxury finishes from aged brass and dark bronze to distressed nickel and polished chrome (please see below list for the full the selection).



Distressed Oil Rubbed Bronze



Oil Rubbed Bronze



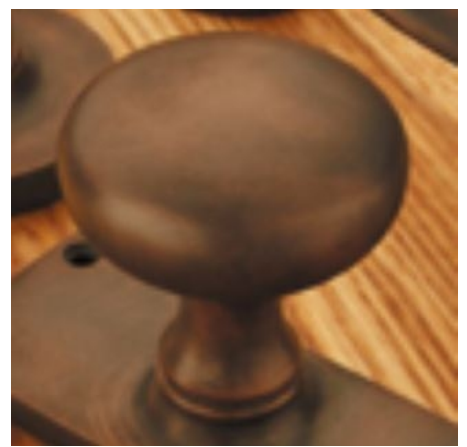
Dark Bronze Metal Antique



Matte Black Bronze



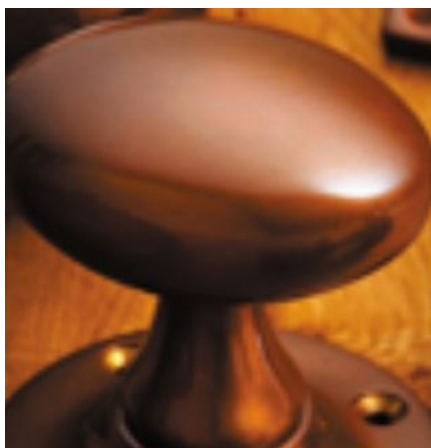
Tudor Bronze



Autumn Bronze



Imitation Bronze Unlacquered



Imitation Bronze Metal Antique



Real Bronze Metal Antique



Distressed Antique Brass



Antique Brass



Smoked Brass



Marbled Brass



Aged Brass



Satin Brass Unlacquered



Satin Brass



Polished Brass Unlacquered



Polished Brass



Polished Gunmetal Unlacquered



Polished Gunmetal



Distressed Antique Nickel





Antique Nickel



Satin Nickel Plate



Pearl Nickel



Polished Nickel



Satin Chrome Plate



Chrome Plate