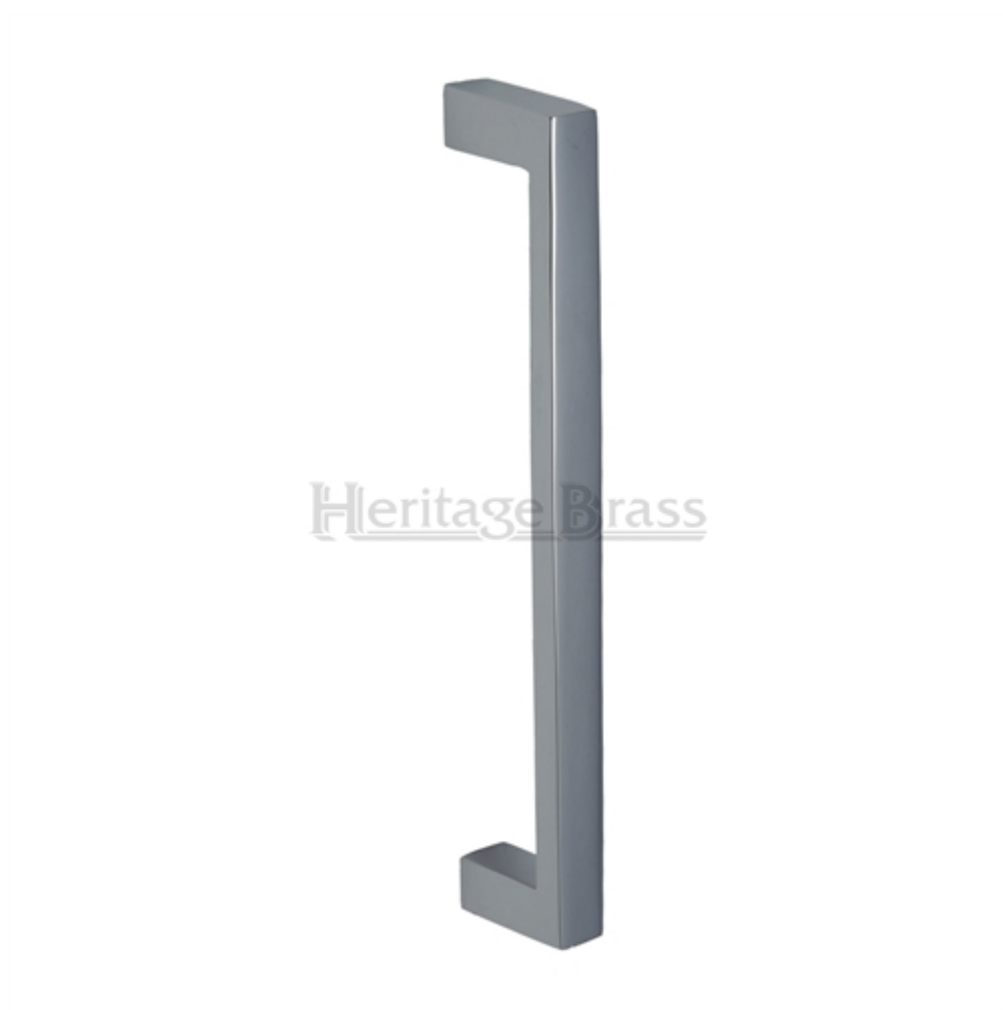

Square Pull Handle - Polished Chrome

Product Images



Description

- High architectural quality Satin Brass Square Pull Handle
- Made from solid brass ideal for internal or external entrance doors
- Bolt through the door design see below diagram



Above diagram shows how a bolt through pull handle is fitted to a wooden door

Finish

- Polished Chrome

Dimensions



Available In One Sizes

Length	Width (B)	Fixing Centres (A)	Projection (C)
245mm	20mm	224mm	50mm

Important Info Before You Buy

- Suitable for wooden doors
- Pull handles are best suited for areas of high or heavy use such as offices, schools and public buildings
- Pull handles are usually fitted to the PULL side of the door
- A finger plate (push plate) is usually required on the push side of the door to cover the fixing bolts
- This pull handle is sold individually - each

Products in this set



42729.1 - Square Pull Handle - 245mm Length (224mm Fixing Centres) - Polished Chrome