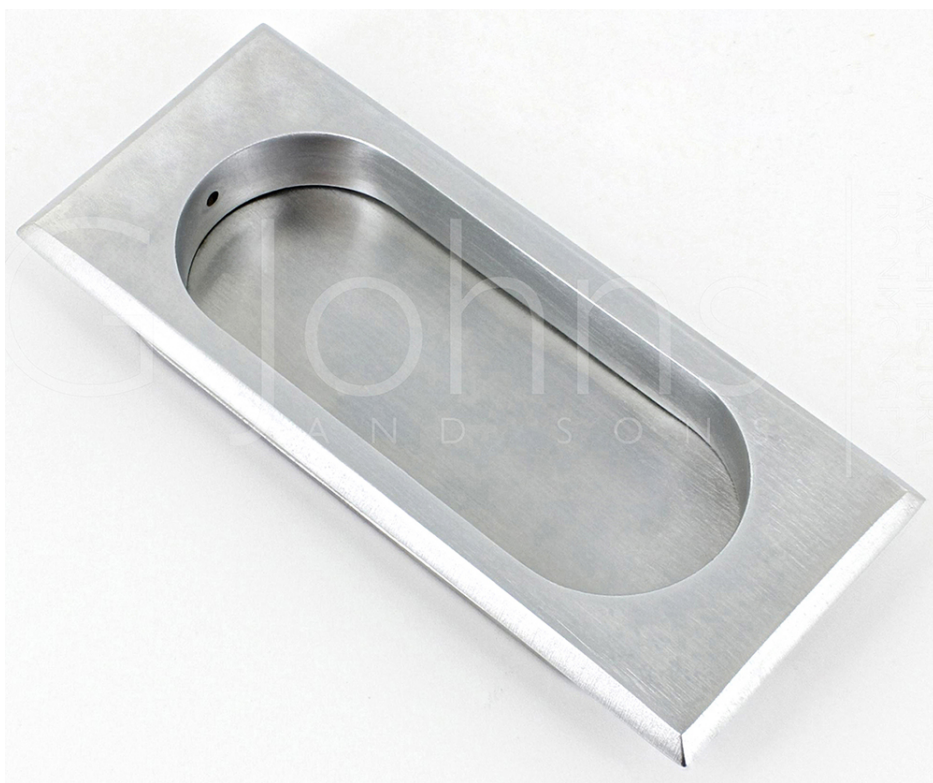


Rectangular Flush Pull With Oval Groove - 105mm x 44mm - Satin Chrome

Product Images



Description

- Rectangular shape flush fitting inset handle for sliding doors.
- Suitable for use on full height sliding doors, wardrobe doors and cupboard doors.
- This flush handle measures 105mm x 44mm.
- **Please note this handle has no lipping around the opening and cannot be used to pull a door open, making it only suitable for use on sliding doors.**
- This item has to be morticed (cut) into the door to allow it to sit fit flush.
- Satin chrome plated - brushed finish.

Base Material

- Made from solid brass.

Finish

- Satin Chrome

Fixings

- This handle is fitted via 2 x countersunk wood screws through the face of the backplate.
- Matching screws are supplied with this item.

Usage

- Suitable for internal or external use.
- To fit this handle completely flush a minimum door thickness of 18mm is required.

Unit Of Sale

- This item is sold individually - (Each)

Products in this set



42756.1 - Rectangular Flush Pull With Oval Groove - 105mm x 44mm - Satin Chrome