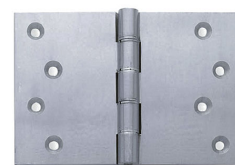


## Broad Butt Projection Hinges - Satin Chrome - Available in Four Sizes

### Product Images



### Description

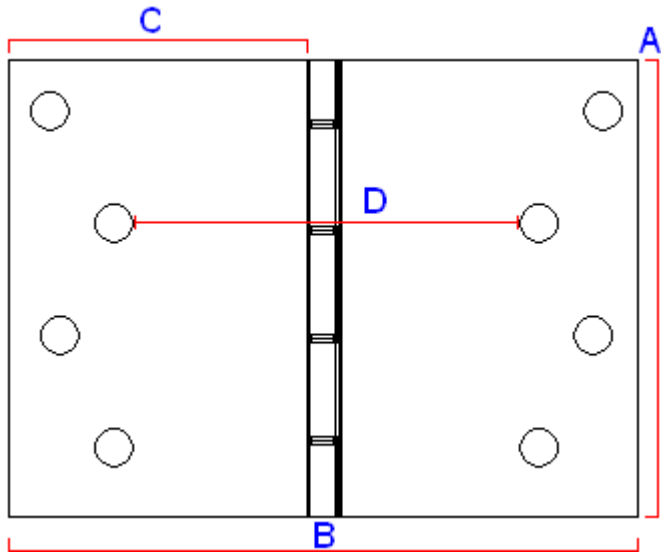
- Suitable for wooden doors
- Base material is brass that has been satin chrome plated
- These hinges are suitable for heavy doors. The broad butts have large knuckle and phosphor bronze washers providing much greater strength and wear-ability compared to parliament hinges
- Hinges are sold and priced in pairs and come supplied with screws
- Broad butt projection hinges for double, patio and French doors
- Hinges allow doors to fold back on its self 180 degrees

- Suitable for heavy internal or external doors

Finish

- Satin chrome

Dimensions



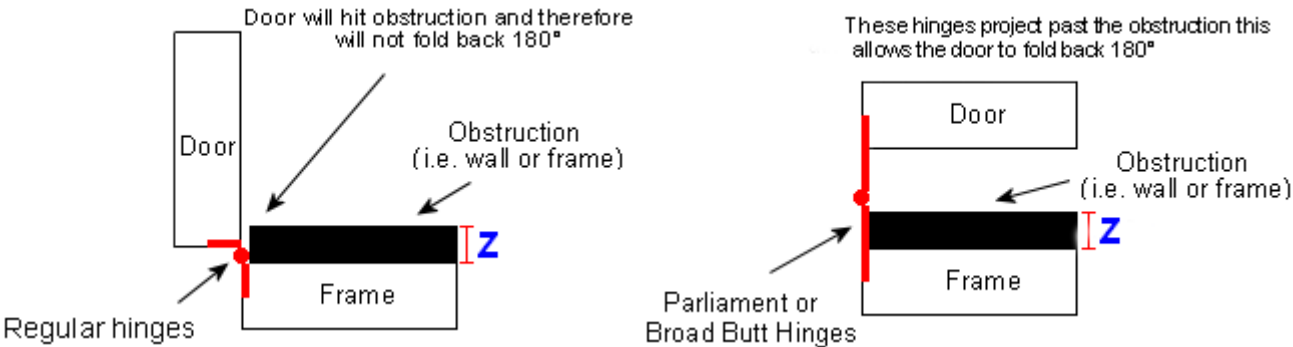
Available in 4 Sizes

- 15177.1 - (102mm x 102mm x 3mm)
- 15177.2- (102mm x 127mm x 3.5mm)
- 15177.3 - (102mm x 152mm x 3.5mm)
- 15177.4 - (102mm x 203mm x 4.5mm)

	15177.1	15177.2	15177.3	15177.4	Dimension On Diagram
Height	102mm	102mm	102mm	102mm	A
Width	102mm	127mm	152mm	203mm	B
Leaf Width	45mm	57mm	69mm	95mm	C
Projection given	44mm	67mm	82mm	114mm	D
Thickness	3mm	3.5mm	3.5mm	4.5mm	N/A

Important Info Before You Buy

- Broad butt projection hinges are used to help project or "throw" a door past an obstruction so it can fold back on it's self 180degrees



- Suitable for wooden doors
- Base material is brass that has been stain chrome plated
- Hinges suitable for heavy doors. The broad butts have large knuckle and phosphor bronze washers providing much greater strength and wear-ability compared to parliament hinges

- Hinges are sold and priced in pairs and come supplied with screws

Products in this set

---



15177.1 - Broad Butt Projection Hinges - Satin Chrome - 102mm x 102mm - Pair



15177.2 - Broad Butt Projection Hinges - Satin Chrome - 102mm x 125mm - Pair



15177.3 - Broad Butt Projection Hinges - Satin Chrome - 102mm x 152mm - Pair



15177.4 - Broad Butt Projection Hinges - Satin Chrome - 102mm x 203mm - Pair