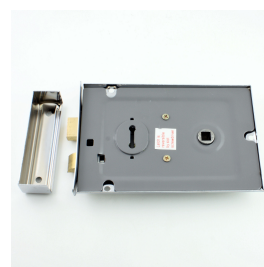
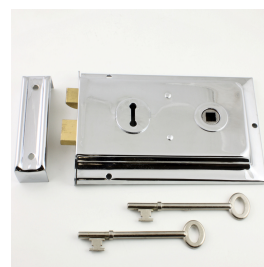


## Flanged Style Traditional Surface Mounted Rim Lock - 6" x 4" - Polished Chrome

### Product Images





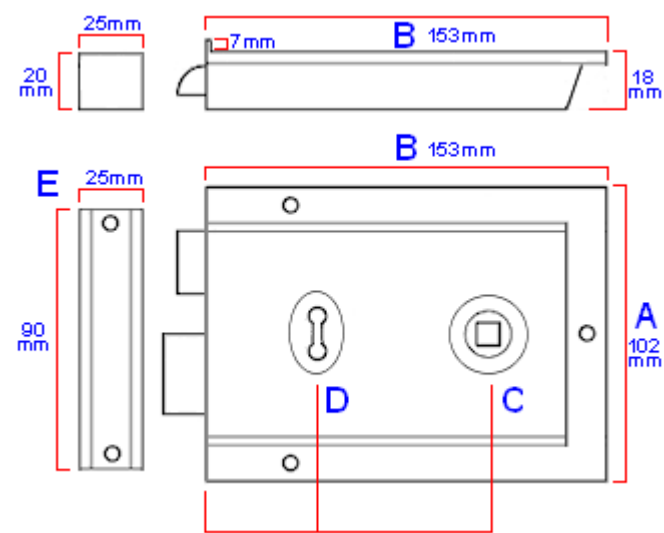
Description

- 15189.1 - Traditional style surface mounted rim lock - 6 inches x 4 inches
- This rim lock has a built in latch so must work in conjunction with a set of rim knobs
- Traditional style with flanged boarder

Finish

- Polished chrome - (shiny finish)

Dimensions



|             |         |                      |
|-------------|---------|----------------------|
|             | 15189.1 | Dimension On Diagram |
| Case Height | 102mm   | A                    |
| Case Width  | 153mm   | B                    |
| Case Depth  | 18mm    |                      |

|                                       |             |   |
|---------------------------------------|-------------|---|
| Spindle Backset (Distance To center)  | 107mm       | C |
| Key Hole Backset (Distance To center) | 44mm        | D |
| Keep - Height (H) x Width (W)         | 90mm x 25mm | E |

Important Info Before You Buy

- Latch can be reversed to suit left or right handed doors
- The Rim lock is fitted to the side of the door that opens towards you
- Key lockable from both sides of the door
- Rim lock is surface mounted on to the door
- No need to mortice or chisel into the door like traditional mortice locks
- This rim lock is a low security product
- Comes supplied with two keys, fixing screws and box keep for the door frame
- Escutcheon (key hole cover) for the opposite side of the door sold separately

Products in this set



15189.1 - Flanged Style Traditional Rim Lock - Polished Chrome - 6" x 4" - Each