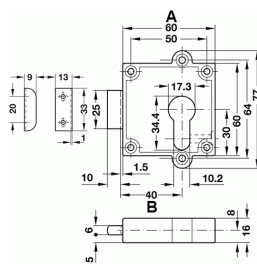


Surface Mounted Euro Profile Rim Dead Lock Case For Cupboard Doors

Product Images



Description

- Surface mounted Euro profile rim dead lock case.
- Designed for use on thin cupboard doors that need to be locked via a Euro profile cylinder.
- Ideal for use on 18mm MDF cupboard doors.
- Must be used in conjunction with a Euro profile cylinder.
- Supplied with angled strike plate for the frame or slave door

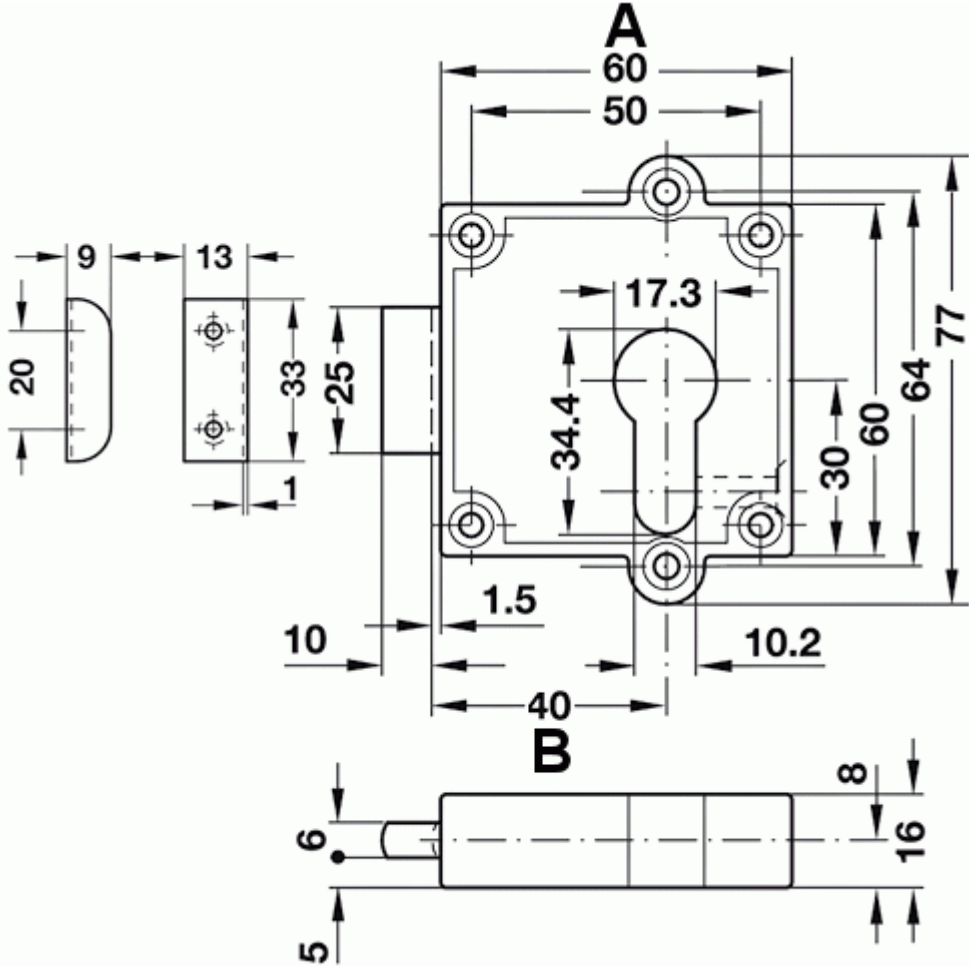
Operation

- Deadbolt is locked and un-locked via a Euro profile cylinder (sold separately).

Finish

- Nickel plated.

Dimensions



Item Code	Lock Case Depth (A)	Backset To Keyhole (B)
43018.1	60mm	40mm

Unit Of Sale

- Each - (1 x lock case supplied with strike plate).

Products in this set



43018.1 - Surface Mounted Euro Profile Rim Dead Lock Case - 60mm Case Depth - (40mm Backset) -
Matt Nickel Plated - Each