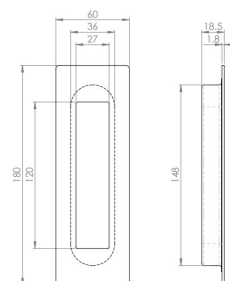


Rectangular Design Large Flush Pull Handle For Sliding & Hinged Doors - Tested For Use On FD30 Fire Doors - 180mm x 60mm - Polished Stainless Steel

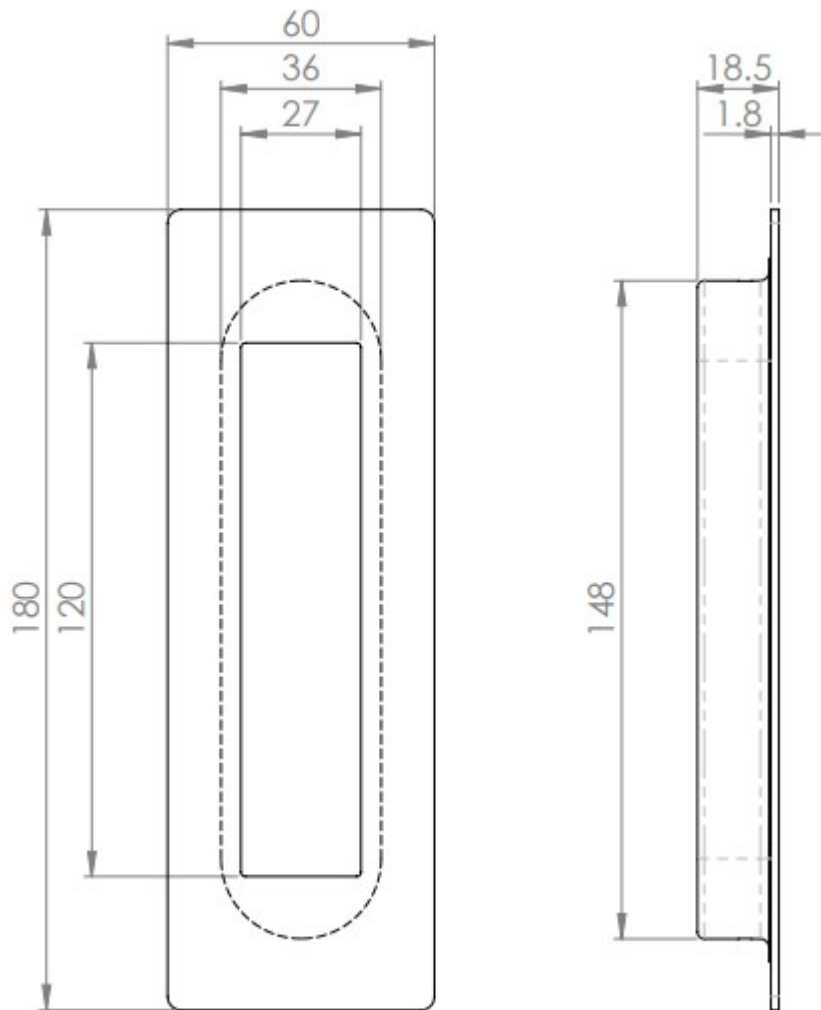
Product Images



Description

- Rectangular shape large flush fitting, inset pull handle for sliding doors.
- Suitable for use on full height sliding doors, wardrobe doors and cupboard doors.
- Sleek minimal look thanks to discreet fixings - (this item is fixed via wood screws from inside the recess).
- Made from stainless steel this item is a polished (shiny) finish.
- This item has to be morticed (cut) into the door to allow it to sit flush.
- Tested for use on FD30 timber fire doors (please check the fire test evidence for your door for compatibility).

Size Details



- Available in one size only - 180mm x 60mm x 17.5mm

Base Material

- Made from stainless steel.

Finish Details

- Polished stainless steel - a highly shiny mirror like finish.

Alternative Finishes Available

- Satin stainless steel - (brushed finish)

Fixings

- This handle is fitted via 2 x wood screws inside the recess of the handle.=
- Screws are supplied with this item.

Usage

- Suitable for internal or external use.
- To fit this handle completely flush a minimum door thickness of 25mm is required.

Unit Of Sale

- This item is sold individually - (Each)

Products in this set



43080.1 - Rectangular Design Large Flush Pull Handle - Tested For Use On FD30 Fire Doors - - 180mm x 60mm - Polished Stainless Steel