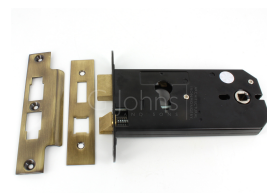
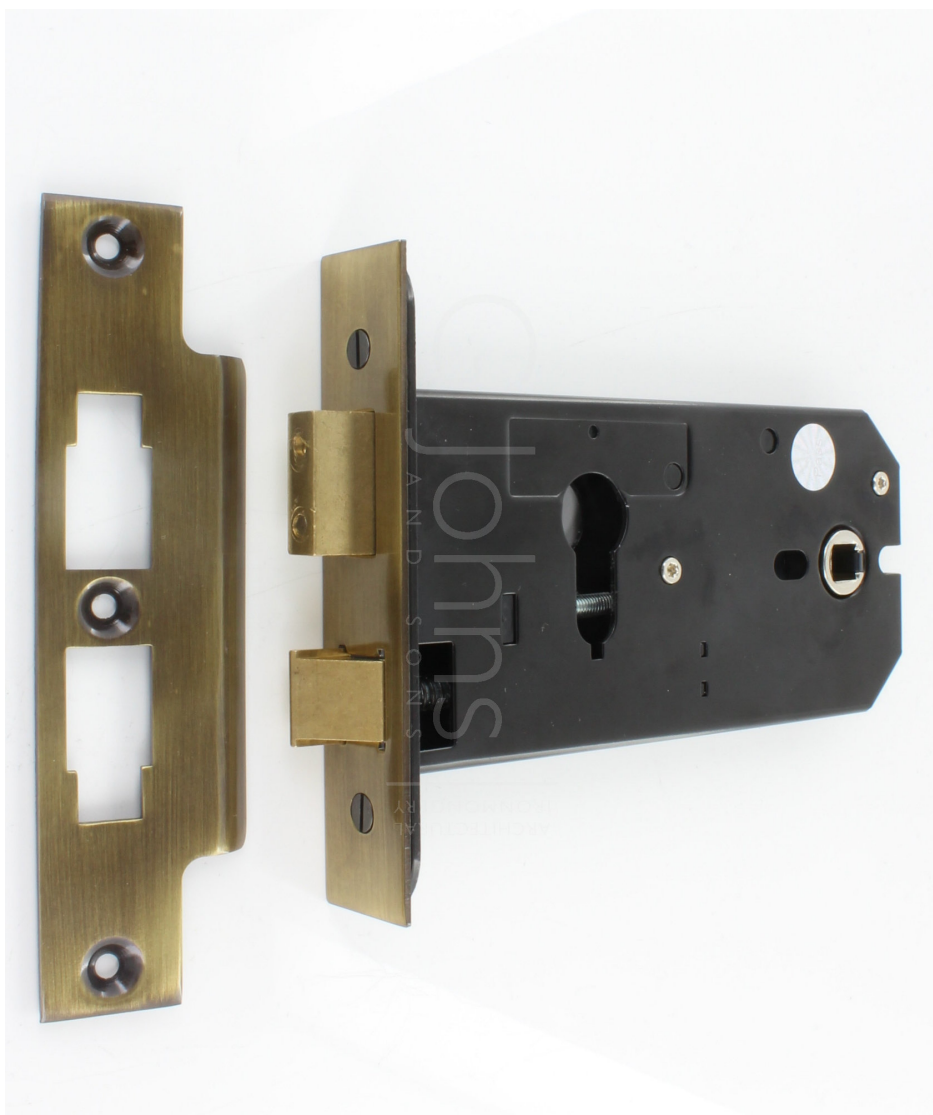


Horizontal Euro Profile Mortice Sash Lock - 152mm Case Depth - Antique Brass

Product Images



Description

- Horizontal Euro profile mortice sash lock case.
- Supplied with Florentine bronze (antique brass finish) forend and strike plates.
- Large style lock case 152mm (6 inches) deep.

- Traditional horizontal style is ideal for mortice knobs as it places the knobs far away from the door frame.
- For use on doors that require door handles and need to be locked via a Euro profile cylinder.
- Must be used in conjunction with some form of door handle and Euro cylinder.
- Horizontal locks were a traditional lock often found in period properties.
- Cylinder hole is located to the side of door knobs rather than underneath.
- Bolt through lock (38mm bolt holes) to suit bolt together handles and mortice knobs.

Operation

- Latch is withdrawn via a mortice door knob or lever handle from either side of the door (handles sold separately).
- Two way action allows un-sprung door knobs to be turned either way to withdraw the latch mechanism and open the door.
- Deadbolt is locked and un-locked via a Euro profile cylinder (sold separately).

Features

- Light to medium weight springing makes this lock ideal for use with door knobs.
- Two way action allows door knobs to be turned in both directions.
- Solid brass guided latch.
- Solid brass deadbolt with anti-saw rollers.
- Bolt through facility for bolt together fixing lever handles and accessories at 38mm centres.
- 8mm x 8mm spindle follower (to suit standard UK size spindles).
- Latch can be reversed on site.
- Reversible frame mounted strike plate.

Security Level

- Medium security architectural range.
- Suitable for use on internal doors in residential or light commercial buildings.

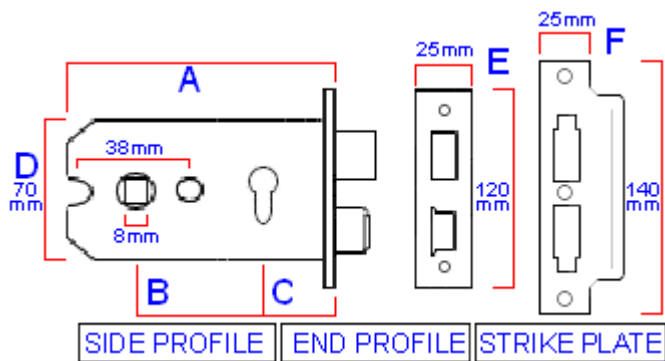
Finish

- Florentine bronze - (antique brass finish)

Alternative Finishes Available

- PVD brass.
- Satin stainless steel.
- Polished stainless steel.

Dimensions



Available in one case size only.

- 43423.1 - 152mm (6 inch)

	43423.1	Dimension On Diagram
Overall Case Depth	152mm	A
Backset (Distance To Centre Of Spindle Hole)	127mm	B
Backset (Distance To Centre Of Key Hole)	50mm	C
Case Height	70mm	D
Forend - Height x Width	120mm x 25mm	E
Strike Plate - Height x Width	140mm x 25mm	F

Options Available To Order

- Intumescent sheets and lock case liners are available. Please see our intumescent fire rated products category for details.

Unit Of Sale

- Each - (1 x lock case supplied with forend and strike plate).

Products in this set



43423.1 - Horizontal Euro Profile Mortice Sash Lock - Antique Brass - 152mm Case Depth (127mm Backset) - Each