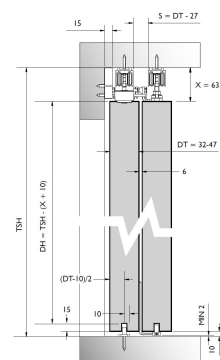
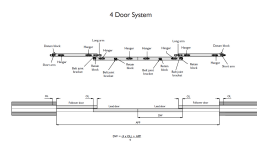
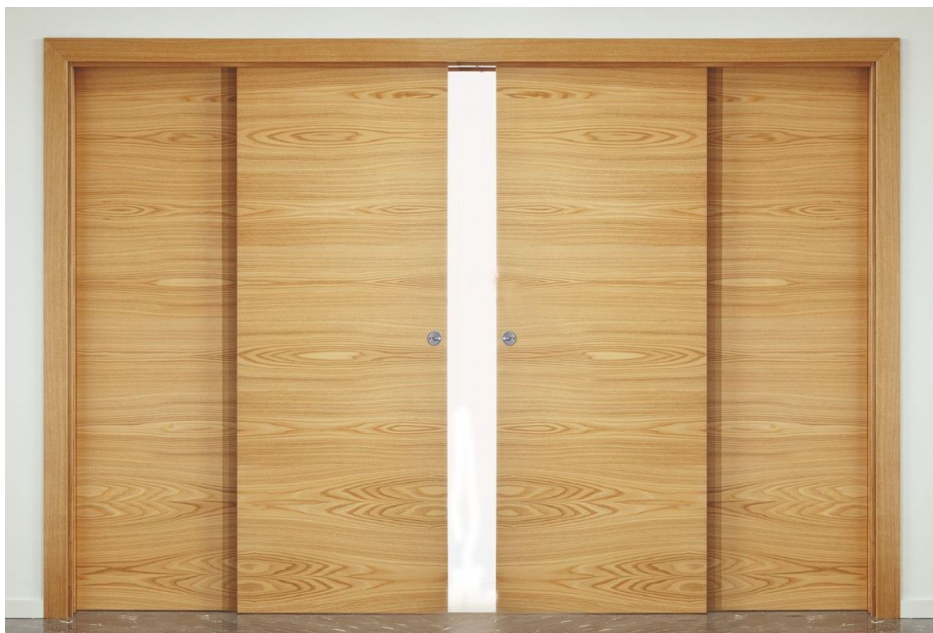
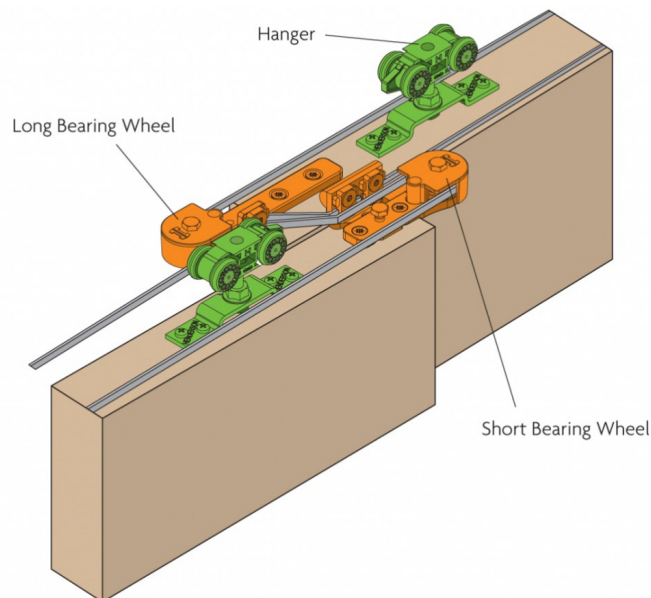


4 Door Double Telescopic Sliding Door Track Kit - Max Door Width Per Panel 1200mm - To Cover A Maximum Opening Of 4660mm - Max Panel Weight 80kg

Product Images





Description

- **Non stock product - sent direct from factory - please allow 3-4 weeks for delivery**
- 4 Door double telescopic sliding door track kit to cover a maximum opening width of 4660mm
- Double door kit - 2 x telescopic doors sliding to the left and 2 x telescopic doors sliding to the right.
- Ideal system for where sliding doors are required to cover a large opening width.
- Doors stack to each side of the opening for extra space saving. Ideal for situations where there is not enough wall space for one large door on each side of the opening.
- Allows multiple doors to travel simultaneously
- The two door leaves on each side are linked together via a toothed belt and pulley system.
- No guide channel required, allowing for a seamless walkway between rooms.
- Ideal for sliding partitions as doors can be neatly stacked to both sides of the opening.
- Includes all the components needed to install a long lasting, smooth running soffit (ceiling) mounted 4 door (double) telescopic sliding door system.
- Supplied with anodised aluminium pre-drilled track for a durable, long lasting finish and easy installation.
- Suitable for use with timber doors.
- **Doors not included.**

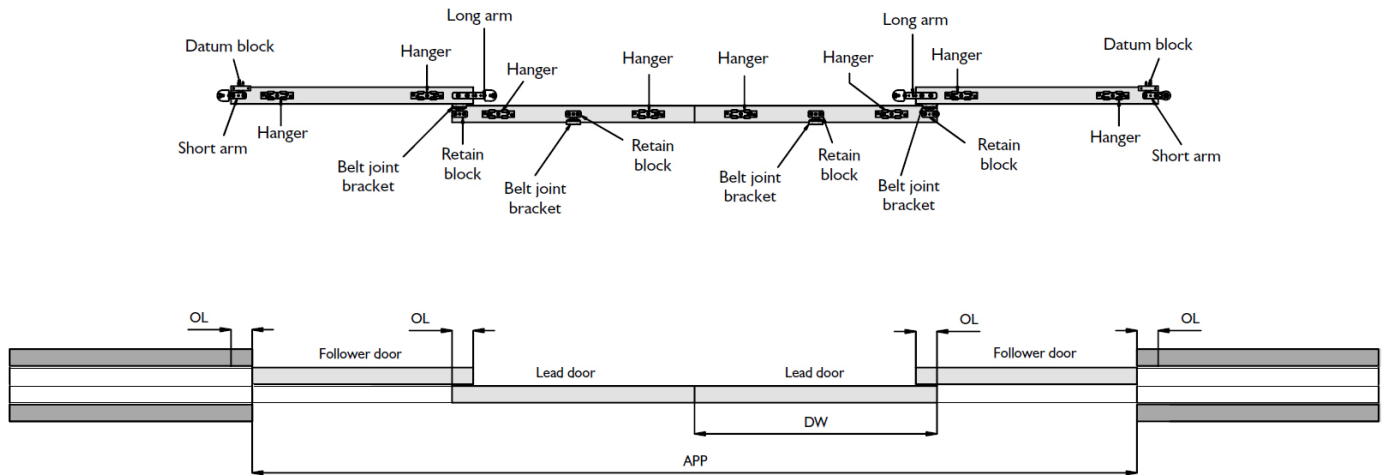
Door Specifications

- Maximum door leaf weight 80kg (per door panel),
- Minimum door width 500mm (per door panel).
- Maximum door width 1200mm (per door panel).
- Door thickness 32mm - 47mm.

Track Lengths & Dimensions

- 2 x 2500mm length track for the 1st door panel (follower door).
- 2 x 4000mm length track for the 2nd door panel (lead door).
- Please note the aluminium tracks can be cut to length on site using a standard hacksaw.

4 Door System

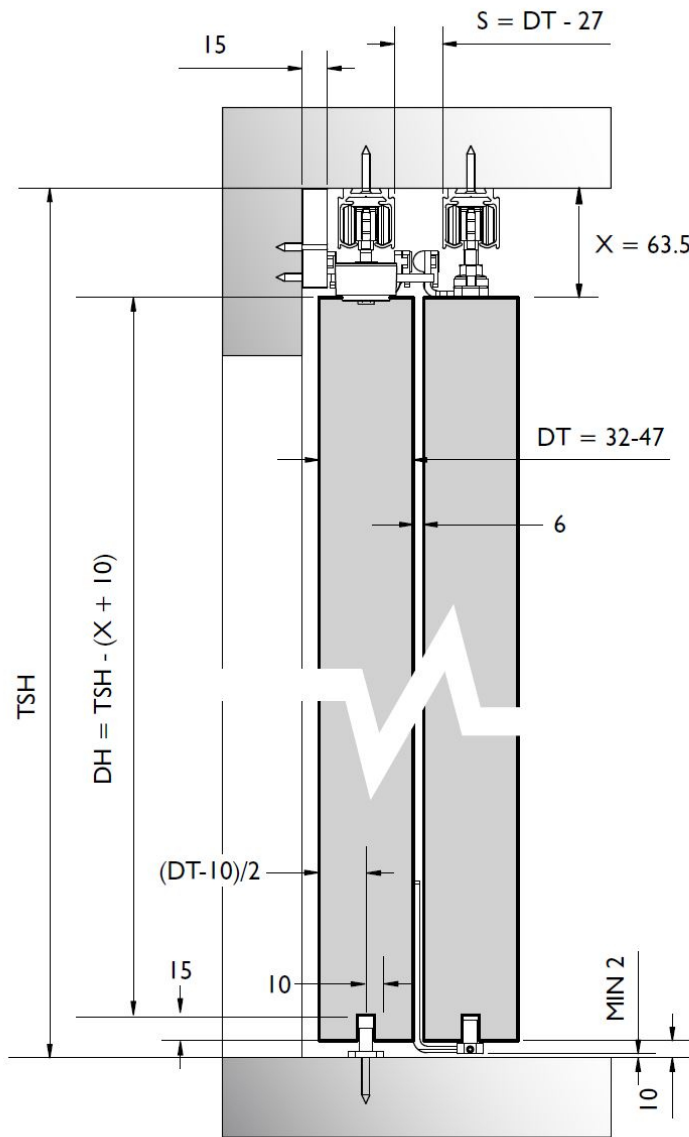


$$DW = \frac{(4 \times OL) + APP}{4}$$

OL = 70 PCH RECOMMENDATION

Ceiling Mounted

- Ceiling mounted tracks.
- Please note a return wall section is required to install the belt fixing unit.

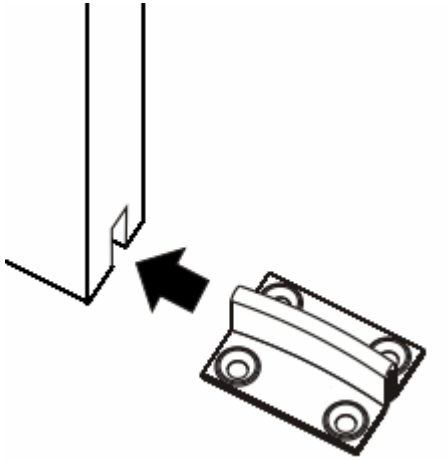


Alternative Kits

- 2 door telescopic kit to cover a maximum opening width of 2330mm - **see related product 43513.1.**
- 3 door telescopic kit to cover a maximum opening width of 3460mm - **see related product 43514.1.**

Floor Guides

- No floor channel required, allowing for a seamless walkway between rooms. Meaning that there are no dust traps and therefore easier to install across a variety of applications
- "T" shape floor guide is used for the 1st door panel which is fixed to the floor next to the door frame.



- "L" shape door guide is installed at the bottom (near the leading edge) of the 1st door panel and guides the 2nd door panel.



Items Included Within The 2 Door Telescopic Sliding Door Kit

- 8 x Hangers & apron plates
- 2 x Short bearing wheel assembly
- 4 x Long bearing wheel assembly
- 4 x Door mounted belt fixing bracket
- 1 x Length of toothed belt
- 2 x Following door guide
- 2 x Fixed base floor guide
- 2 x Wall mounted belt fixing
- 2 x 2500mm length anodised aluminium track
- 2 x 4000mm length anodised aluminium track

Product Video

Products in this set



43515.1 - 4 Door Double Telescopic Sliding Door Track Kit - Max Door Width Per Panel 1200mm - To Cover A Maximum Opening Of 4660mm - Max Panel Weight 80kg (Per Panel)