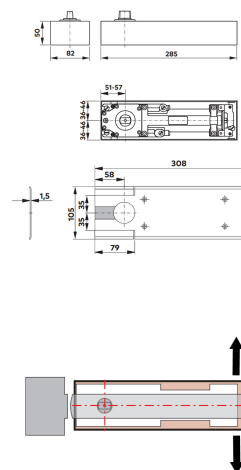


Double Action Floor Spring Door Closer - With Mechanical Hold Open At 90 Degrees - Adjustable Power Size 1-4 - Supplied With Cover Plate & Double Action Accessories

Product Images



Short Description

- Double action floor spring door closer with mechanical hold open at 90 degrees..
- Floor mounted closer designed for doors that need to swing in two directions.
- Features individual controls for door speed, latching action and backcheck.
- Can be adjusted to suit door widths up to 1100mm wide.
- Max Door Width / Weight – 1100mm / 120Kg.
- Power adjustable by valve.
- Due to the built-in mechanical hold open function this door closer **cannot** be used on fire doors.

- Satin stainless steel & satin brass cover plate options.
- **Complete kit includes; body, double action accessories and cover plate.**

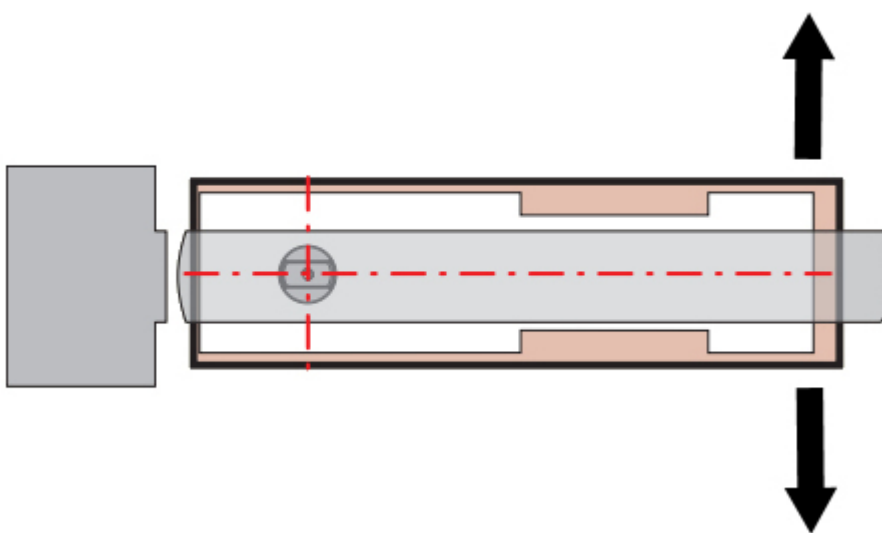
Description

Floor Plate Finish Options:

- Satin stainless steel.
- Satin brass.

Double Action:

- Allows the door to swing through 175 degrees (allows the door to swing in both directions).

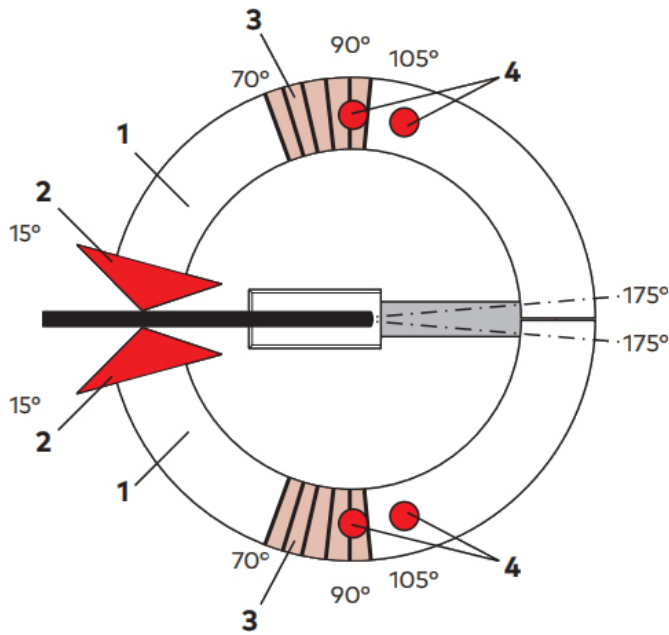
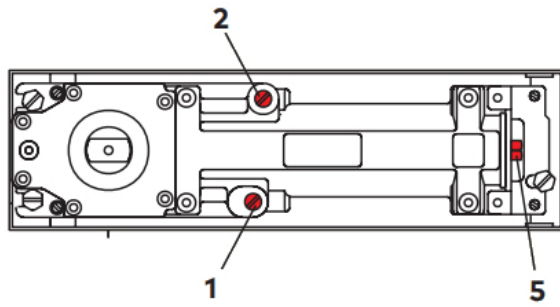


Power Adjustment Via Spring:

- Separate power adjustment, by means of an allen key at the end of the closer body, this closer can be adjusted to suit door widths up to 110mm wide and up to 120kg in weight (EN power size 1-4)

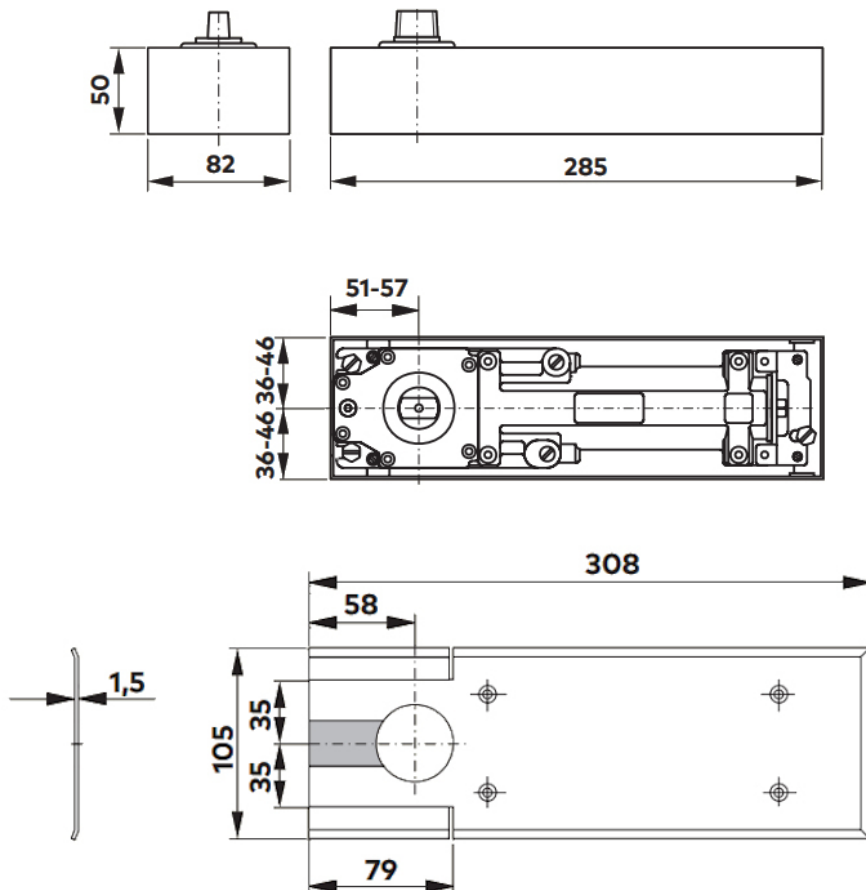
Functions:

- 1. Adjustable closing speed in the range 175° – 15°.
- 2. Adjustable closing speed in the range 15° – 0°.
- 3. Mechanical backcheck (from approx. 70°).
- 4. Hold open function at 90 degrees. **For hold open function at 105 degrees please contact us.**
- 5 Adjustable spring strength (EN 1-4).



Floor Spring Dimensions:

- Body Length - 285mm
- Body Height - 50mm
- Body Width - 82mm
- Cover Length - 308mm
- Cover Width - 105mm
- Cover Thickness - 1.5mm



Opening Forces - BS 8300:

The opening force (0-30 degrees) is less than 30N.

The opening force (30-60 degrees) is less the 22.5N

Products in this set



43536.2 - Double Action Floor Spring Door Closer - With Mechanical Hold Open At 90 Degrees - Adjustable Power Size 1-4 - Supplied With Cover Plate & Accessories - Satin Brass Unlacquered



43536.1 - Double Action Floor Spring Door Closer - With Mechanical Hold Open At 90 Degrees - Adjustable Power Size 1-4 - Supplied With Cover Plate & Accessories - Satin Stainless Steel