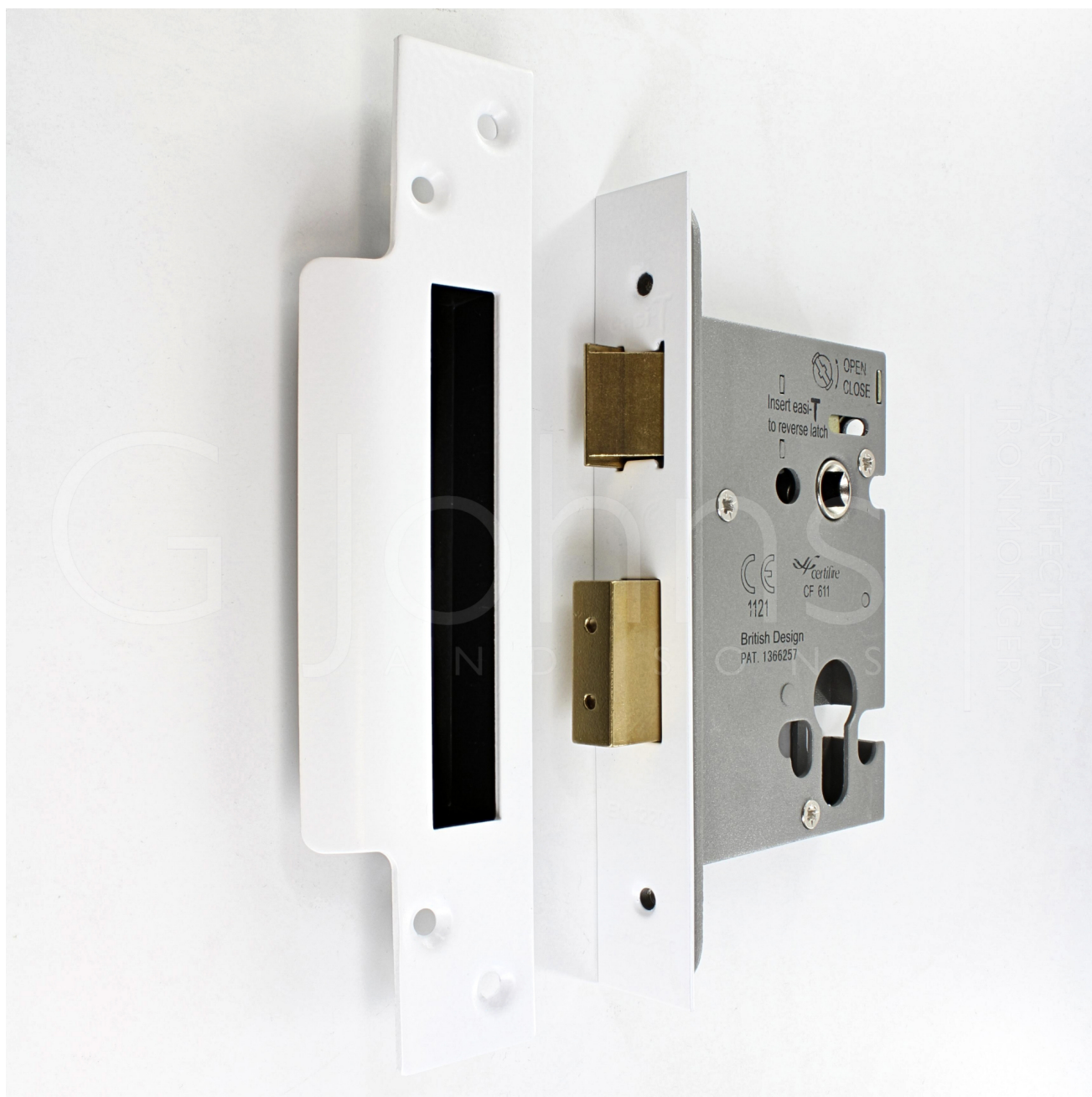


---

**Architectural Quality Euro Profile Mortice Sash Lock Case - CE / UKCA Marked - Fire Rated - Certifire Approved - Matt White**

**Product Images**

---



## Description

---

- Matt white euro profile architectural quality sash lock case.
- For use on doors that require door handles and need to be locked via a Euro profile cylinder.
- 47.5mm Euro centres.
- Must be used in conjunction with some form of door handle and Euro cylinder.
- Supplied with a matt white forend and frame mounted strike plate including black plastic back box.
- Special order - lead time 4-6 weeks.

## Operation

- Latch is withdrawn via a lever handle from either side of the door (handles sold separately).
- Deadbolt is locked and un-locked via a Euro profile cylinder (sold separately).

## Features

- Solid brass guided latch.
- Solid brass deadbolt with anti-saw rollers.
- Medium to heavy weight springing.
- Adjustable spring strength, ideal for use with sprung or un-sprung lever furniture. (Spring strength can be adjusted by simply removing a screw on the edge of the lock case).
- Bolt through facility for bolt together fixing lever handles and accessories at 38mm centres.
- 8mm x 8mm spindle follower (to suit standard UK size spindles).
- Patented Easy turn latch reversal mechanism - the latch can be reversed on site without taking the lock case apart.
- Reversible and adjustable strike plate.

## Security Level

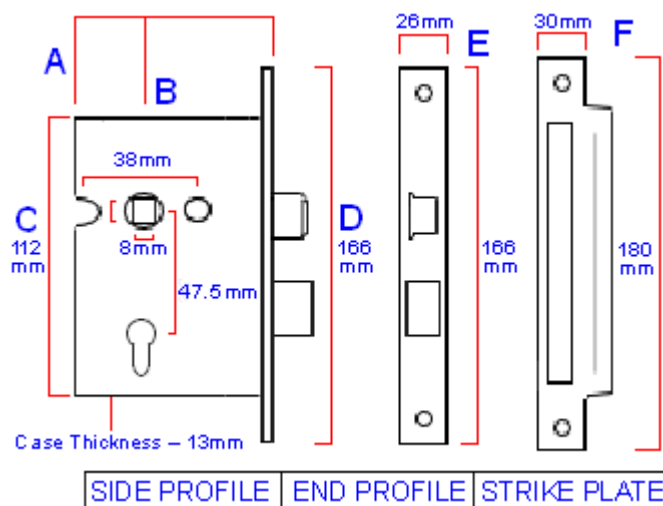
- Medium security architectural range.
- Suitable for use on internal doors in residential, commercial or public buildings.

## Finish

- Matt white

## Dimensions

- Available in two sizes
- 64mm case depth (44mm backset).
- 76mm case depth (57mm backset).



Item Code	Lock Case Depth (A)	Backset To Keyhole (B)	Euro Centres
40932.1	64mm	44mm	47.5mm
40932.2	76mm	57mm	47.5mm

## Standards This Product Conforms To

- Lock case tested and passed to BS EN 12209. The British / European standard requirements and test methods covering locks and latches. Classification number - **2H810F2BA20**.
- Tested and passed to BS EN 1634 the British / European standard for determining the fire resistance of door and shutter assemblies including hardware. Assessed for use on 30 minute and 1 hour timber fire doors FD30 / FD60.- Intumescent lock case liners required (sold separately).
- Certifire approved.
- CE Marked / UKCA Marked.
- Declaration of performance (DoP) - ***please see the additional information tab to download the certificate.***

## Options Available To Order

- This lock is also available to order with radius (rounded shape) forend and strike plates. Please contact us for lead times and prices.
- Intumescent sheets and lock case liners are available. Please see our intumescent fire rated products category for details.

## Rebate Kit For Double Rebated Doors

- Available to special order, please contact us for prices & lead times.

## Unit Of Sale

- Each - (1 x lock case supplied with forend, strike plate and plastic back box).

Products in this set

---



43932.1 - Architectural Quality Euro Profile Sash Lock Case - CE / UKCA Marked - Fire Rated - Certifire Approved - 64mm Depth - (44mm Backset) - Matt White



43932.2 - Architectural Quality Euro Profile Sash Lock Case - CE / UKCA Marked - Fire Rated - Certifire Approved - 76mm Depth - (57mm Backset) - Matt White