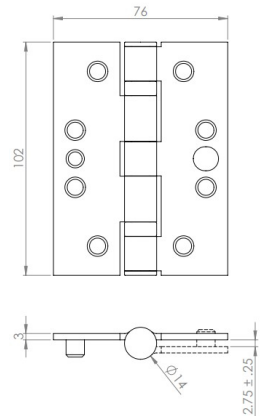


Ball Bearing Fire Rated Security Dog Bolt Door Hinges - Grade 13 - CE / UKCA Marked - Certifire Approved - 120kg Weight Limit - 102mm x 76mm - Satin Stainless Steel

Product Images



Description

- Ball bearing fire rated security hinges.
- These hinges have a welded stud (Dog Bolt) fitted to one hinge leaf, this helps provide additional security for outward opening doors.
- One hour fire rated hinges suitable for use on internal or external timber doors
- Tested and passed to the British / European standard BS EN 1935 suitable for use on fire doors up to 120kg in weight
- Ball bearings located in the knuckle of hinge provide a smooth action, excellent strength and high wear-ability

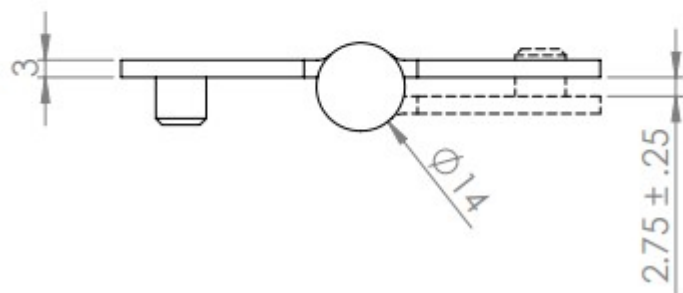
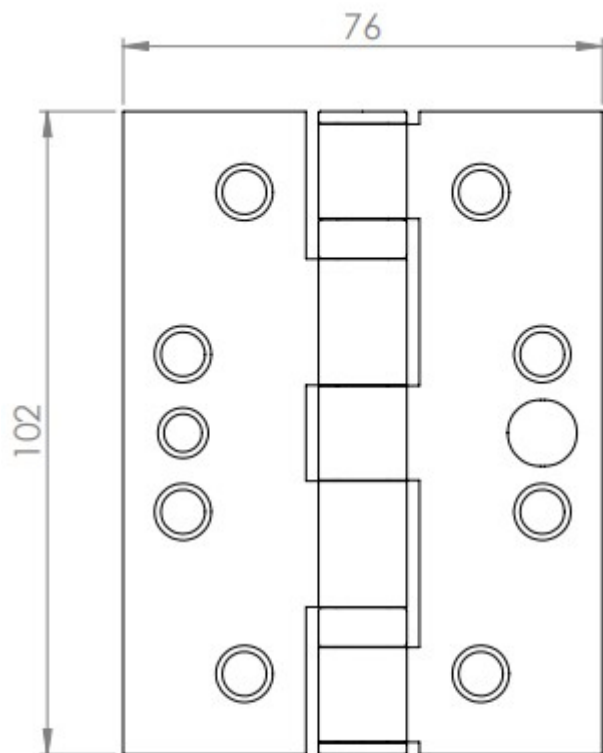
Base Material

- Stainless steel

Finish

- Satin stainless steel - (brushed finish)

Dimensions



Standards This Product Conforms To

- Tested and passed to BS EN 1935* the British / European standard requirements and testing methods covering single axis hinges. Classification number - **4-7-6-1-1-4-0-13**.
- ***To meet this standard 2mm thick intumescent liners should be fitted behind each leaf of the hinge.**
- Tested and passed to BS EN 1634 the British / European standard for determining the fire resistance of door and shutter assemblies including hardware. These hinges have been assessed for use on 30 minute and 1 hour timber fire doors FD30 / FD60.
- CE Marked / UKCA Marked

Classification Details

- Durability grade 7 - tested to 200,000 opening & closing cycles
- Test door mass grade 6 - suitable for use on doors up to 120kg in weight
- Corrosion resistance grade 4 - high resistance to corrosion in accordance to EN 1670
- Overall hinge grade 13

Usage

- Suitable for use 44mm and 54mm thick wooden doors
- To pass fire regulations three hinges must be fitted per door (pair and a half).

Unit Of Sale

- The hinges are sold and priced in **pairs (2 hinges)** and come supplied with fixing screws.

Products in this set



44100.1 - Ball Bearing Fire Rated Security Dog Bolt Hinges - Grade 13 - CE / UKCA Marked - Certifire Approved - 120kg Weight Limit - 102mm x 76mm - Satin Stainless Steel - Pair - (2 Hinges)