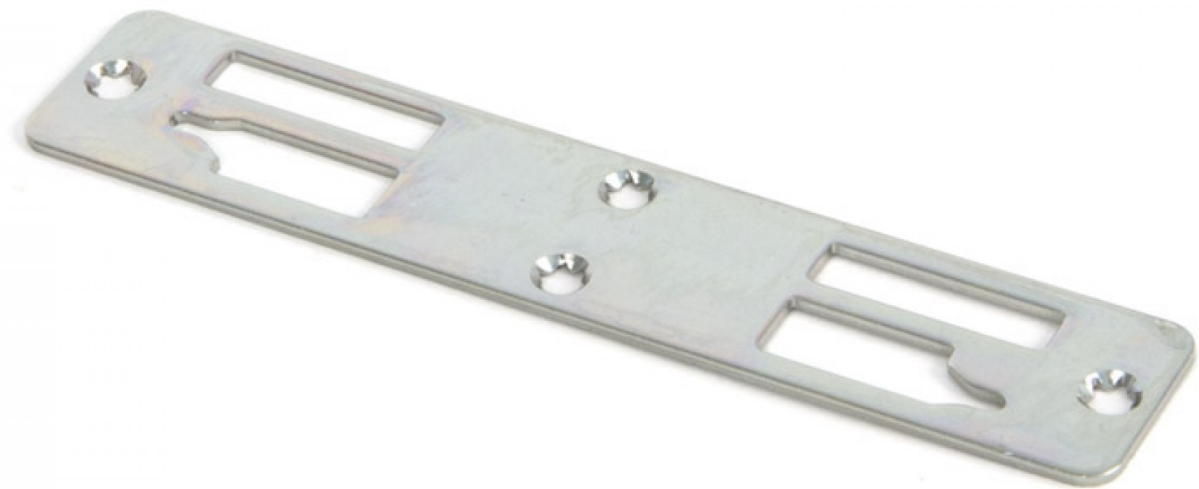

Flat Centre Keep To Suit Espagnolette Multipoint Window Gear Box Mechanism With Centre Claw Locks - 2mm Thick Plate

Product Images



Description

- Centre keep to suit 44490 espagnolette multi-point window gear box mechanism - with centre claw locks.
- This plate is fitted to the door frame or slave window,
- Allows the claws on the gear box to engage into place.
- Zinc plated.

Dimensions

- 165mm x 32mm x 2mm

Additional Items Required (Sold Separately)

- Multi-point window handles - [view category](#)
- Gear box mechanism - see product **44490**
- Shoot bolts - see product **44492** - (2 required per window).
- Shoot bolt keeps - see product **44493** - (2 required per window).

Products in this set



44491.1 - Flat Centre Keep To Suit Espagnolette Multipoint Window Gear Box Mechanism With Centre Claw Locks - 2mm Thick Plate