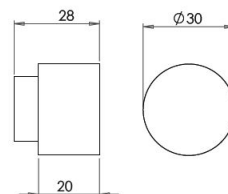
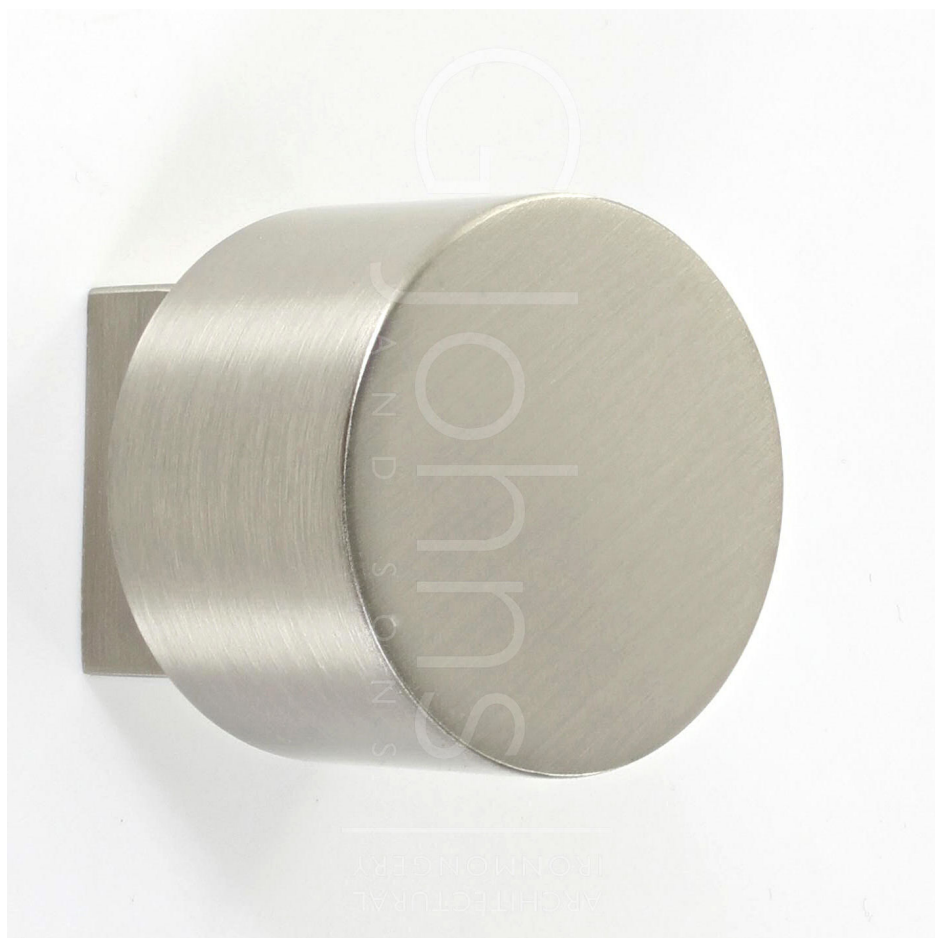


## Cylinder Shape Cupboard Knob With Square Base - Satin Nickel

### Product Images



### Description

- Heavy quality, cylinder design cupboard door knobs with a squared base and an satin nickel finish
- High architectural quality range, each knob is made from solid brass giving the item a heavy luxurious feel
- This popular design is ideal for use on modern or contemporary units including, kitchen cabinet doors, wardrobes, cupboard doors and drawers

### Size Details

Item Code	Knob Diameter	Projection From Door
44628.1	30mm	28mm



## Base Material

- Made from solid brass.

## Finish

- Satin nickel

## Fixings

- This handle is fitted via a M4 bolt from the rear of the door / drawer - see below diagram.



- Bolt through fixings provide a superior strong fixing allowing this knob to be fitted to tall or heavy doors
- Comes supplied with M4 (diameter) x 25mm & 45mm (long) bolts, the 25mm long bolts are to suit 18mm cupboards and the 45mm designed to be cut down to length on site for thicker doors
- To save having to cut down the bolts provided we sell a range of M4 fixing bolts in various lengths

## Usage

- Suitable for internal use

## Unit Of Sale

- These cupboard knobs are sold individually - (Each)

### Products in this set

<div> </div> <div> 44628.1 - Cylinder Shape Cupboard Knob With Square Base - Satin Nickel - Each </div>
---