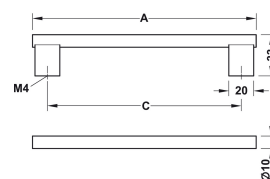


Knurled Pattern Cabinet Pull Handle - Matt Black

Product Images



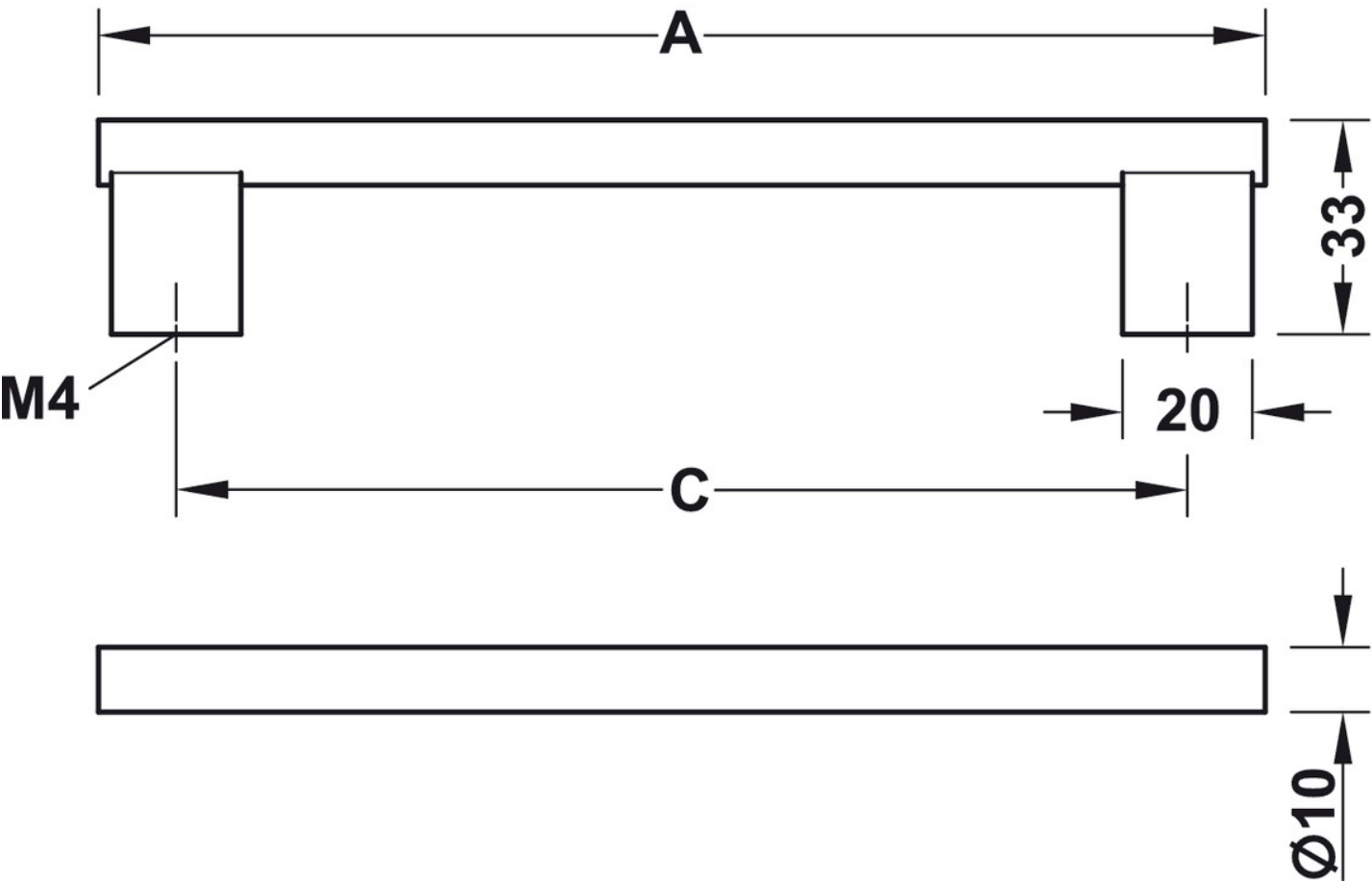
Description

- Knurled Pattern Cabinet Pull Handle
- This popular design is ideal for use on classic or traditional units including, kitchen cabinet doors, wardrobes, cupboard doors and drawers

Finish Details

- Matt black

Size Details



Item Code	Bolt centers (C)	Overall Length (A)	Projection (C)	Diameter
45053.1	160mm	182mm	33mm	10mm
45053.2	256mm	278mm	33mm	10mm
45053.3	1178mm/ 589mm	1200mm	33mm	10mm

- Largest size has a centre support post

Fixings

- This cupboard knob is fitted via a M4 bolts from the rear of the door / drawer - see below diagram



- Bolt through fixings provide a superior strong fixing allowing this knob to be fitted to tall or heavy doors
- Comes supplied with a 25mm long bolt - suitable for use on 18mm thick doors
- For doors thicker then 18mm, longer M4 fixing bolts are available to buy separately (See related products below)

Usage

- Suitable for internal use
- For doors thicker then 18mm please purchase longer M4 fixing bolts. (See related products below)

Unit Of Sale

- This cabinet handle is sold individually - (Each)

Products in this set



45053.1 - Knurled Pattern Cabinet Pull Handle - 182mm Overall Length - (160mm Fixing Centres) - Matt Black - Each



45053.2 - Knurled Pattern Cabinet Pull Handle - 278mm Overall Length - (256mm Fixing Centres) - Matt Black - Each



45053.3 - Knurled Pattern Cabinet Pull Handle - 1200mm Overall Length - (1178mm/ 589mm Fixing Centres) - Matt Black - Each