
Security Hinge Bolts - Extra Security For External Doors - Pack of 2 - Grade 316 Satin Stainless Steel

Product Images



Description

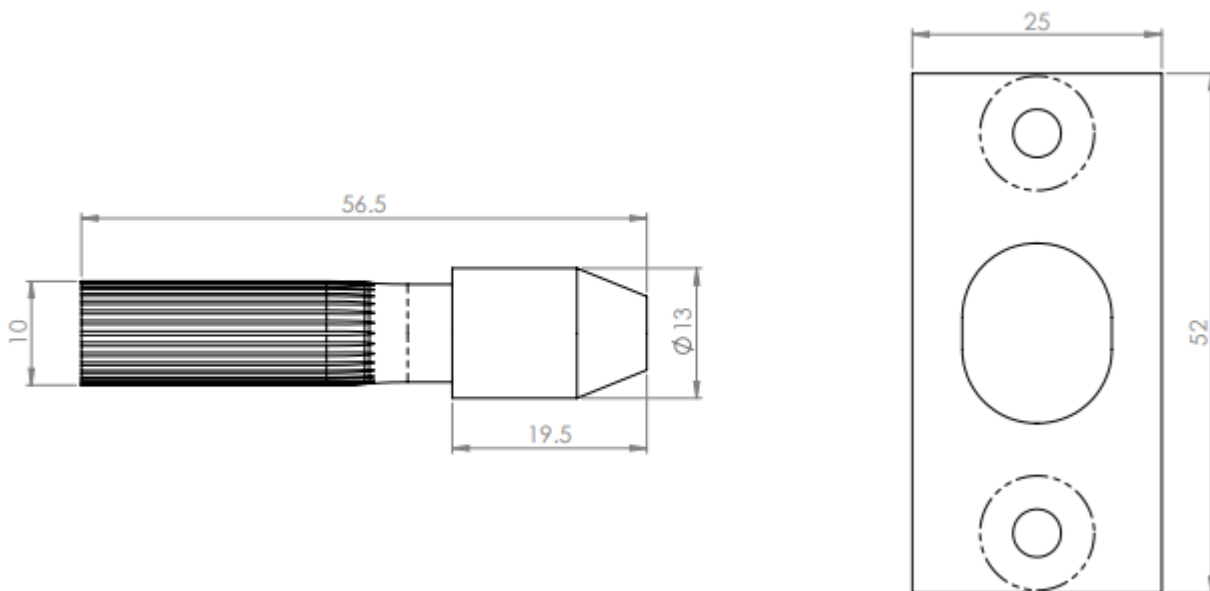
- Pack of 2 hinge bolts
- Hinge bolts are fitted to help prevent a door being forced open via the hinges
- Ideal for use on external doors that open outwards
- Bolts should be fitted 75mm below the top hinge and 75mm above bottom hinge for maximum effectiveness
- Bolt needs a 9.5mm diameter hole drilled to a depth of 32mm in to door edge
- A 22mm diameter hole drilled to a depth of 19mm is required on the door frame

Finish

- Satin stainless steel - grade 316

Dimensions

- Overall Length - 56.5mm
- Projection From Door When fitted - 19.5mm
- Bolt Diameter - 10mm
- Stud Diameter - 13mm



Products in this set



48181.1 - Security Hinge Bolt Set - Grade 316 Satin Stainless Steel - (Pair)