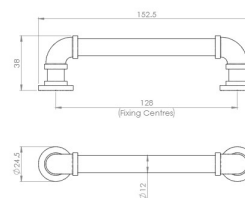


Pipe Shape Cabinet Pull Handles - Available In Two Sizes - Satin Nickel

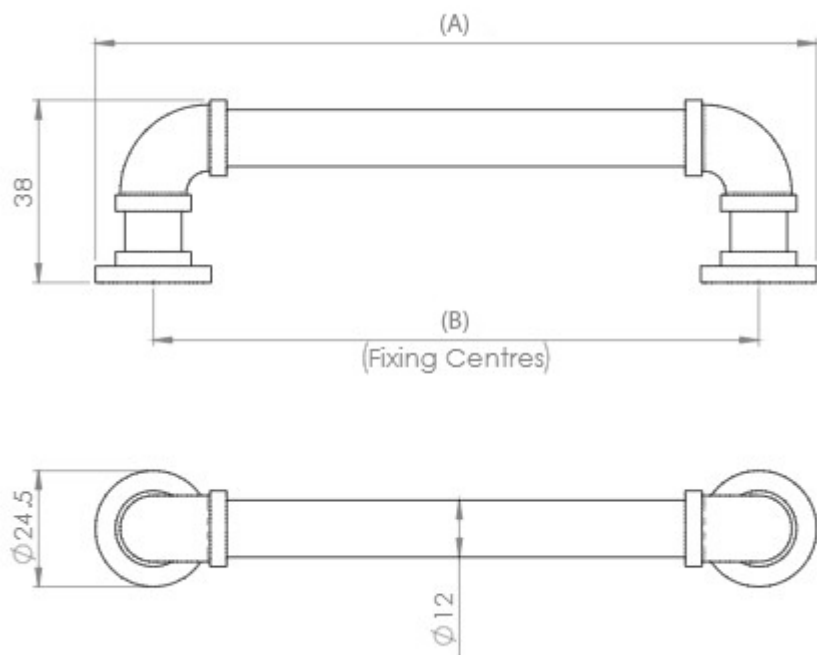
Product Images



Description

- Pipe shape cabinet pull handle.
- Available in two lengths, 153mm or 345mm
- Supplied with M4 fixing bolts.
- Simple classic design is ideal for use on modern or traditional units including, kitchen cabinet doors, wardrobes, cupboard doors and drawers.

Size Details



Item code	Overall Length (A)	Fixing Centres (B)	Projection	Bar Diameter	Rose Diameter
48193.1	153mm	128mm	38mm	12mm	35mm
48193.2	345mm	330mm	38mm	12mm	35mm

Base Material

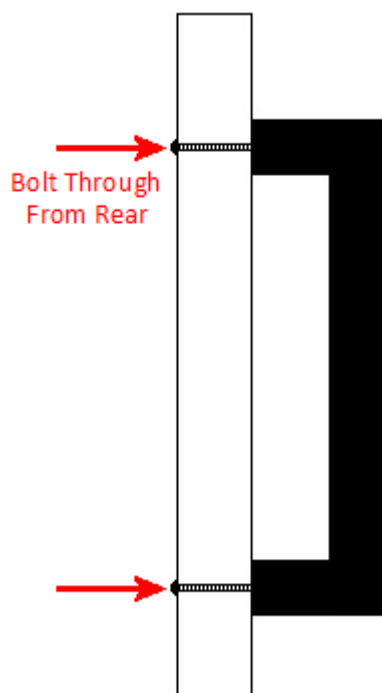
- Made from zinc alloy

Finish Details

- Satin Nickel

Fixings

- This handle is fitted via M4 bolts from the rear of the door / drawer - see below diagram.



- Bolt through fixings provide a superior strong fixing allowing this handle to be fitted to tall or heavy doors.
- Supplied with M4 (diameter) x 25mm (long) bolts - Suitable for use on 18mm thick doors.
- For doors thicker than 18mm, longer M4 fixing bolts are available to buy separately. (Product 30176)

Usage

- Suitable for internal use.

Unit Of Sale

- This cabinet handle is sold individually - (Each).

Products in this set



48193.1 - Pipe Shape Cabinet Pull Handles - 153mm length (128mm Fixing Centres) - Satin Nickel - Each



48193.2 - Pipe Shape Cabinet Pull Handles - 345mm length (330mm Fixing Centres) - Satin Nickel - Each