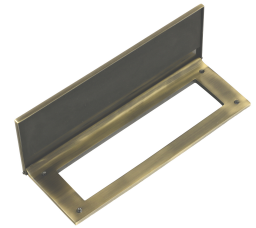
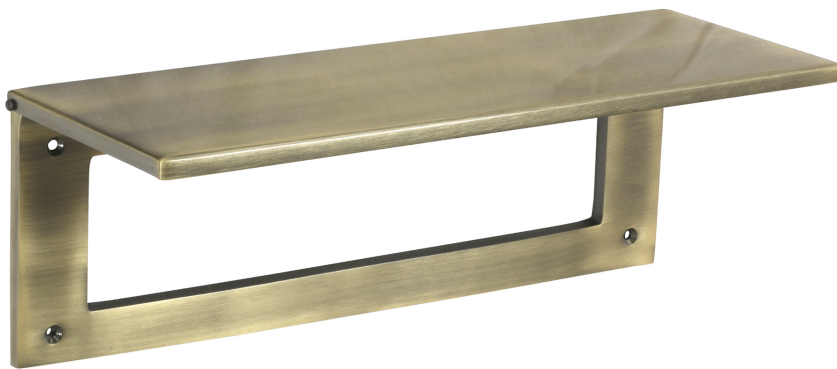

Heavy Internal Door Tidy with Draught Excluder - Two Sizes - Antique Brass

Product Images



Description

- Heavy architectural quality internal door tidy with draught excluder for the inside of a front door.
- This plate is designed to cover the hole made by fitting a letter box into a front door
- Known as a letter plate tidy as it tidies up the appearance of the inside of the door
- Helps to cut down on draught coming through the letter plate via the foam lined flap.

Base Material

- Made from solid brass

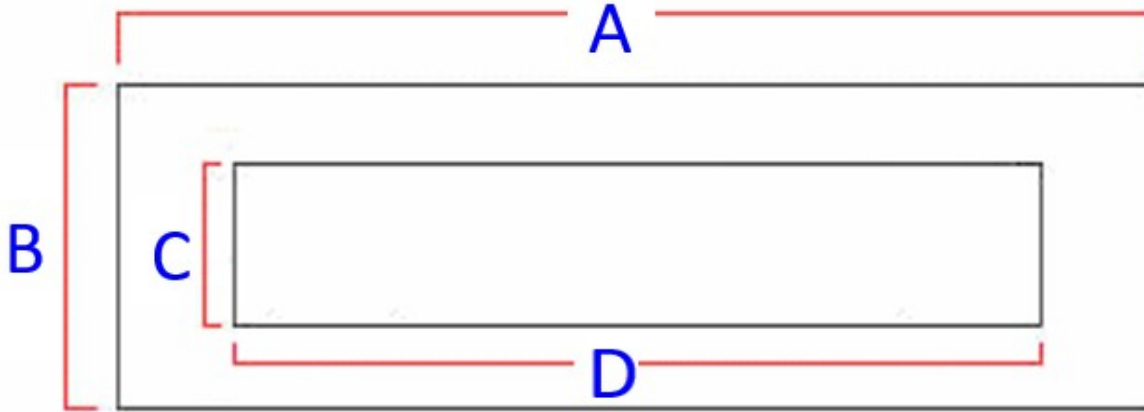
Finish

- Antique Brass

Dimensions

Available in two sizes

Item Code	Length (A)	Height (B)	Depth	Aperture Height (C)	Aperture Width (D)	Bolt Centres Cover Range
48217.1	260mm	88mm	12mm	45mm	200mm	215mm to 240mm
48217.2	315mm	115mm	12mm	60mm	245mm	260mm to 290mm



- Supplied with 2 x imperial and 2 x metric flat countersunk bolts, these bolts are designed to replace the existing bolts and dome nuts supplied with the letter plate. The flat bolts allow the inner tidy to sit flat against the back of the door.
- Supplied with matching wood screws to attach the tidy to the back of the door.
- Designed to cover the hole on the inside of the front door where the letter plate has been cut out for
- For the right size letter tidy - Make a note of the distance between the bolt centres of your letter plate and the height of the aperture. Choose a letter tidy that is slightly longer and higher to make sure you cover the hole and bolts in the door

Products in this set



48217.1 - Internal Door Tidy with Draught Excluder 260mm x 88mm (Aperture 200mm x 45mm) - Antique Brass (Lacquered) - Each



48217.2 - Internal Door Tidy with Draught Excluder 315mm x 115mm (Aperture 245mm x 60mm) - Antique Brass (Lacquered) - Each