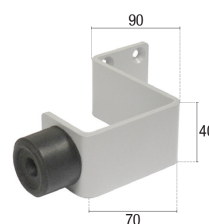


Wall Mounted Cranked Pattern Door Buffer - Satin Stainless Steel

Product Images



Description

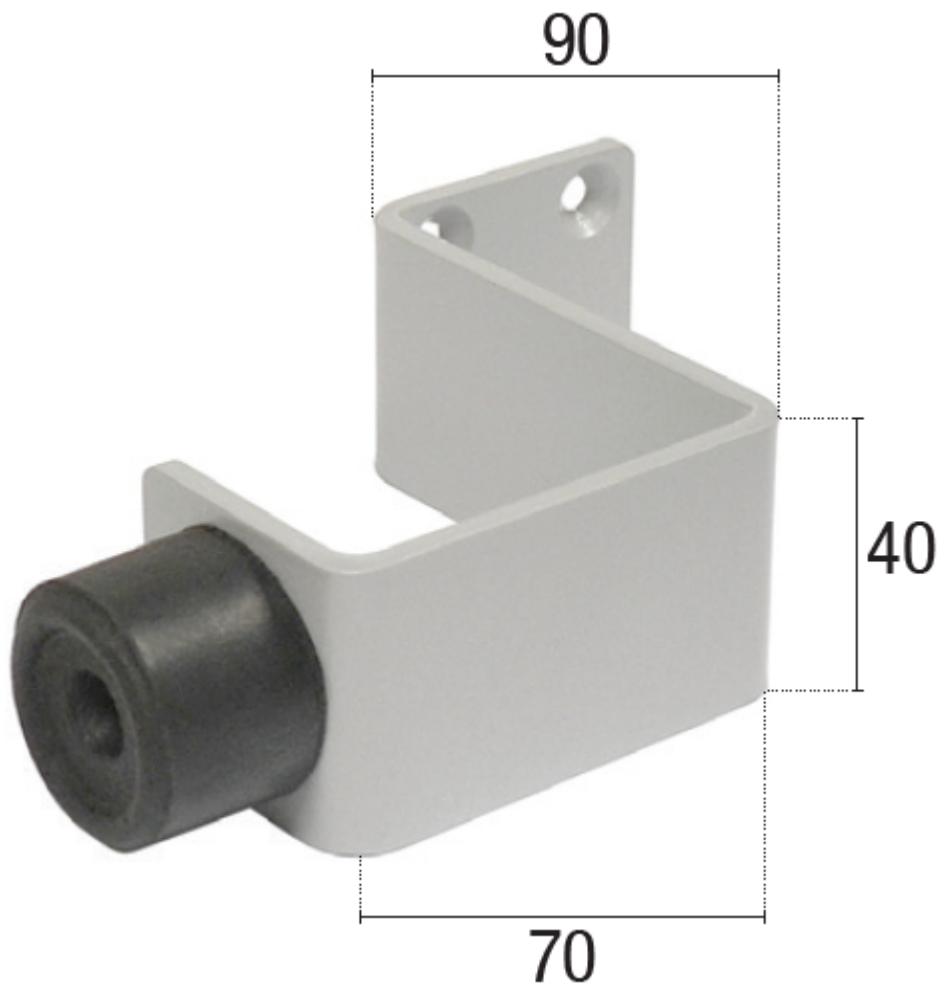
- Designed for external outward opening hinged doors to prevent the door opening beyond 90 degrees and slamming into walls. It fits to the wall and projects over the door frame to buffer the door.
- The 90mm projection allows the bracket to be fitted to the adjacent wall so the frame or architrave is accommodated within the angle.
- It is recommended to fit this product at mid-height on the frame as this spreads the load on the door, but it may be fitted higher to avoid projection into public thoroughfares at child level.
- It can be used where a floor mounted doorstop might be considered a trip hazard, or where the bottom of the door is considerably higher than ground level making it infeasible to fit a floor mounted doorstop.
- Can be used where a door stay or door closer is not desired. Depending on the frame detail, it may also be fitted to the door frame.

- Manufactured from 4mm thick satin stainless steel (grade 304) It is supplied complete with a 35mm diameter black rubber buffer which is bolted in place.
- The bracket is drilled four times with 6mm holes countersunk for No.12 screws (not supplied).
- Care is required when specifying this product as its fixing position close to the hinge axis can create a fulcrum when the door comes into contact with it, especially with heavy doors in windy locations. In these situations, a heavier duty doorstop or door stay should be used.

Finish

- Satin Stainless Steel

Dimensions



Products in this set



48237.1 - Wall Mounted Cranked Pattern Door Buffer - Satin Stainless Steel - Each