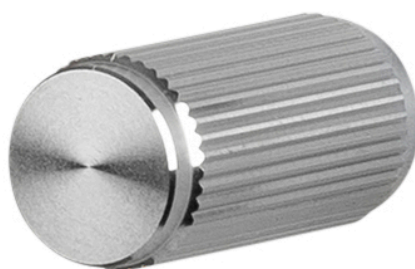
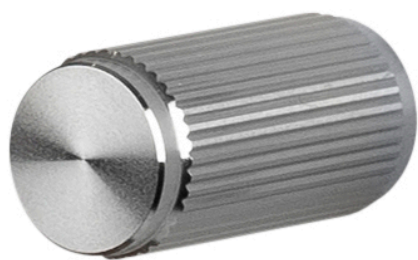


Linear Pattern Cylinder Shape Cupboard Knobs - Satin Stainless Steel

Product Images



12 mm
1/2"



25 mm
1"



Description

- Buster & Punch linear pattern cupboard knobs, satin stainless steel
- Contemporary design cylinder shape.
- This popular cylindrical design is ideal for use on, kitchen cabinet doors, wardrobes, cupboard doors and drawers.
- **Sold in pairs (2 x cupboard knobs)**

Size Details

- 25mm length x 12mm diameter

12 mm
 $\frac{4}{8}$ "



25 mm
1"



Finish Details

- Satin stainless steel.

Fixings

- This cupboard knob is fitted via an **M5** bolt from the rear of the door / drawer - see below diagram.
- Bolt through fixings provide a superior strong fixing allowing this knob to be fitted to tall or heavy doors.
- Supplied with a 25mm long bolt - suitable for use on 18mm thick doors.
- For doors thicker than 18mm, longer M5 fixing bolts are required, please contact us with your requirements.

Unit Of Sale

- These cupboard knobs are sold in pairs (2 x cupboard knobs).

Products in this set



48254.1 - Linear Pattern Cylinder Shape Cupboard Knobs - 25mm Length x 12mm Diameter - Satin Stainless Steel - Pair - (2x Cupboard Knobs)