

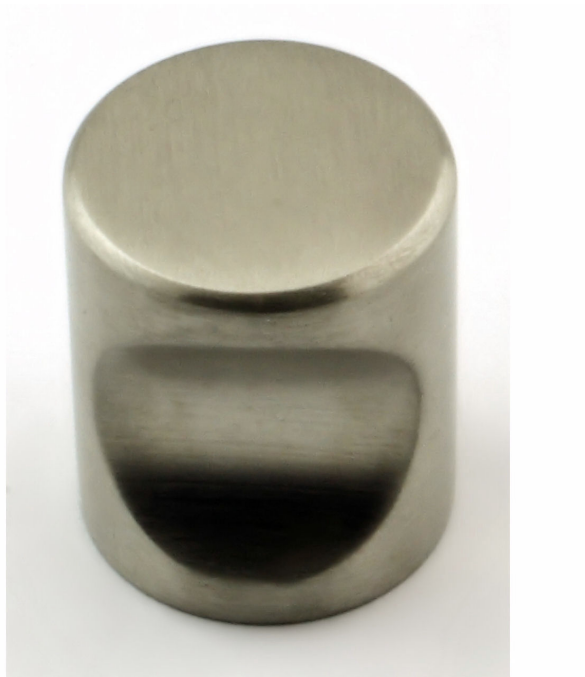
---

## Contemporary Cylindrical Shape Cupboard Knobs - 4 Sizes - Satin Stainless Steel

### Product Images

---





## Description

- Contemporary design cylinder shape cupboard door knobs with finger groove.
- Made from solid stainless steel these knobs are a brushed / satin finish.
- Cylinder design with a small finger recess grooved into the bottom of the knob for use as a grip to pull with..
- High architectural quality range, each knob is made from solid stainless steel giving them a heavy luxurious feel.
- This popular cylindrical design is ideal for use on, kitchen cabinet doors, wardrobes, cupboard doors and drawers.
- Available in four sizes from a small 16mm diameter up to a large 30mm diameter.

## Size Details

Item Code	Knob Diameter	Projection From Door
20007.1	16mm	20mm
20007.2	20mm	24mm
20007.3	25mm	30mm
20007.4	30mm	38mm

## Base Material

- Made from solid stainless steel.

## Finish Details

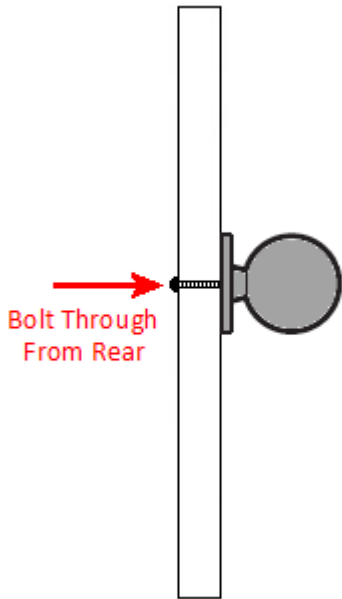
- Satin stainless steel - a grey colour with very slight golden undertones. The raw stainless steel has been satinised "brushed" to produce visible brush marks in the surface of the item.

## Alternative Finishes Available

- Polished stainless steel - (shiny finish.)

## Fixings

- This cupboard knob is fitted via a M4 bolt from the rear of the door / drawer - see below diagram.



- Bolt through fixings provide a superior strong fixing allowing this knob to be fitted to tall or heavy doors.
- Comes supplied with a 25mm long bolt - suitable for use on 18mm thick doors.
- For doors thicker than 18mm, longer M4 fixing bolts are available to buy separately (See related products below).

## Alternative Fixings

- For fixing two cupboard knobs back to back on either side of a door, a length of M4 stud is required to screw the two knobs together. - See related products below.
- For face fixing a cupboard knob by screwing it directly into the front of a wooden door or drawer, a dual M4 / Wood screw is required. - See related products below.

## Usage

- Suitable for internal use.
- For doors thicker than 18mm please purchase longer M4 fixing bolts. (See related products below).

## Unit Of Sale

- These cupboard knobs are sold individually - (Each).

Products in this set

---



20007.1 - Contemporary Cylindrical Shape Cupboard Knob - Satin Stainless Steel - 16mm Diameter Knob - Each



20007.2 - Contemporary Cylindrical Shape Cupboard Knob - Satin Stainless Steel - 20mm Diameter Knob - Each



20007.3 - Contemporary Cylindrical Shape Cupboard Knob - Satin Stainless Steel - 25mm Diameter Knob - Each



20007.4 - Contemporary Cylindrical Shape Cupboard Knob - Satin Stainless Steel - 30mm Diameter Knob - Each