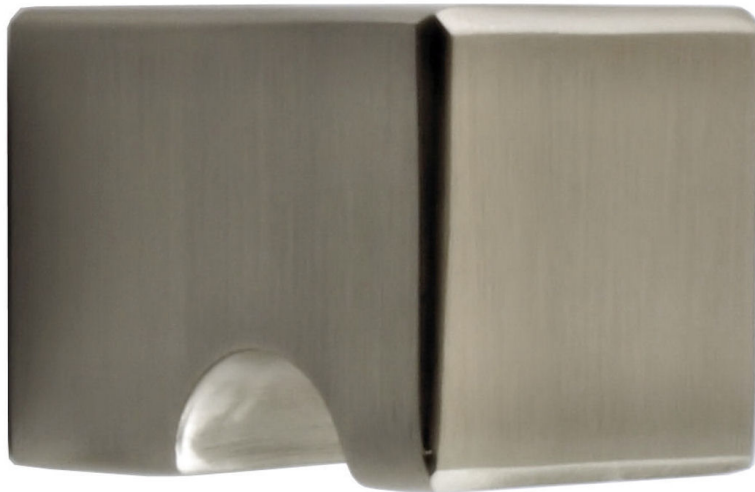

Cube Shape Square Cupboard Knobs - 2 Sizes - Satin Nickel

Product Images





Description

- Contemporary square, cube shape cupboard knobs with a brushed satin nickel finish.
- Cube design with a small finger recess grooved into the bottom of the knob for use as a grip to pull with.
- This popular design is ideal for use on modern units including, kitchen cabinet doors, wardrobes, cupboard doors and drawers.
- Available in 2 sizes including a small 18mm x 18mm cube and a larger 22mm x 22mm cube.
- Brushed satin nickel finish.

Size Details

Item Code	Height	Width	Projection (Depth)
20010.1	18mm	18mm	25mm
20010.2	22mm	22mm	30mm

Base Material

- Made from a zinc alloy.

Finish Details

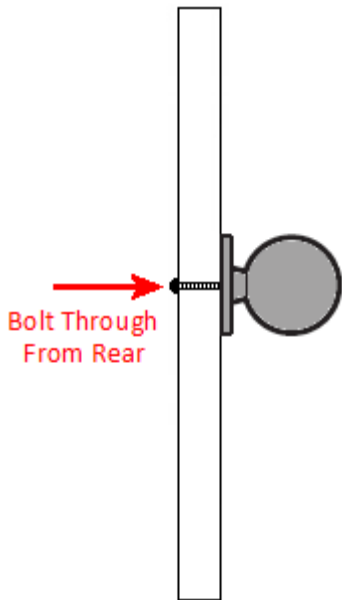
- Satin nickel - a warm grey colour with a very slight golden tint and visible brush marks in the surface of the item.
- Satin nickel is a very close match to satin stainless steel ideal for use in kitchens.
- This item has been lacquered to help protect and maintain the satin nickel finish.

Alternative Finishes Available

- Polished chrome

Fixings

- This handle is fitted via a M4 bolt from the rear of the door / drawer - see below diagram.



- Bolt through fixings provide a superior strong fixing allowing this knob to be fitted to tall or heavy doors.
- Comes supplied with a 25mm long bolt - suitable for use on 18mm thick doors.
- For doors thicker than 18mm, longer M4 fixing bolts are available to buy separately. (See related products below.)

Alternative Fixings

- For fixing two cupboard knobs back to back on either side of a door, a length of M4 stud is required to screw the two knobs together. - See related products below.
- For face fixing a cupboard knob by screwing it directly into the front of a wooden door or drawer, a dual M4 / Wood screw is required. - See related products below.

Usage

- Suitable for internal use.
- For doors thicker than 18mm please purchase longer M4 fixing bolts. (See related products below.)

Unit Of Sale

- These cupboard knobs are sold individually - (Each.)

Products in this set



20010.1 - Cube Shape Square Cupboard Knob - Satin Nickel - 18mm x 18mm - Each



20010.2 - Cube Shape Square Cupboard Knob - Satin Nickel - 22mm x 22mm - Each