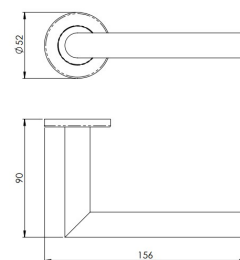


Mitred Round Bar Toilet Roll Holder - Concealed Fix Roses - Satin Brass PVD Plated

Product Images



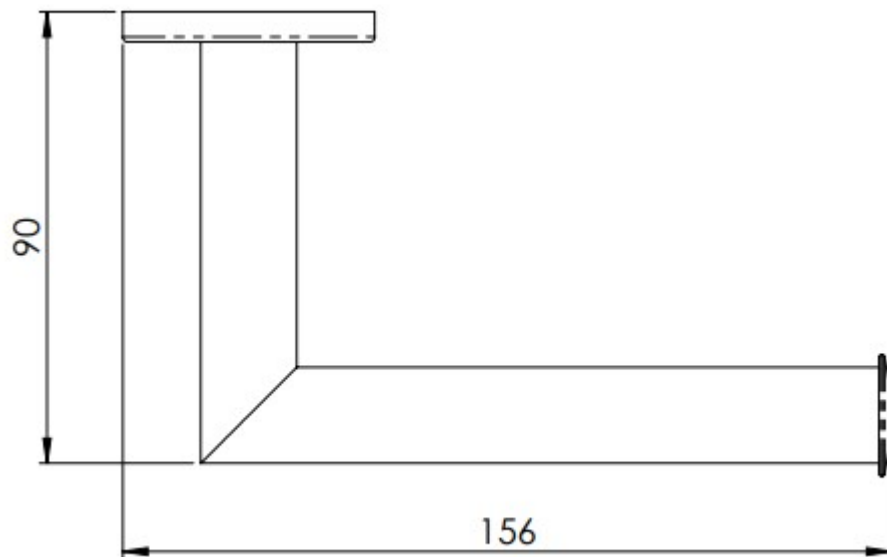
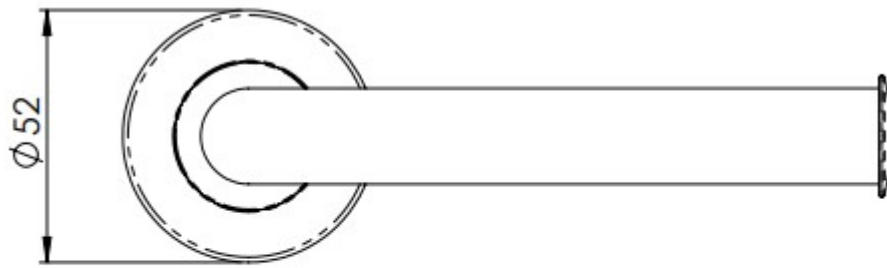
Description

- A simple toilet roll holder with a mitred round bar design, secured onto a concealed fix rose
- A contemporary modern range of stylish bathroom fittings

Finish

- Satin Brass (PVD)

Dimensions



- 52mm Diameter
- 90mm Projection
- 156mm Overall length

Unit Of Sale

- Each
- Comes with fixing screws, wallplugs and concealed fixing plate

Products in this set



48724.1 - Mitred Round Bar Toilet Roll Holder - Concealed Fix Roses - Satin Brass PVD Plated