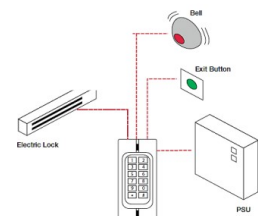
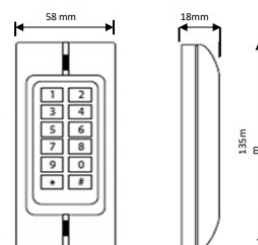


## Keypad With Proximity FOB Reader - Satin Stainless Steel

### Product Images

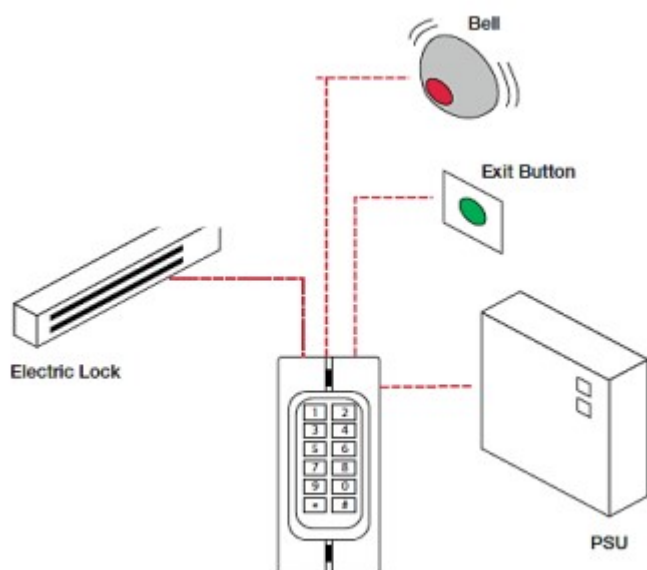


### Description

- A new generation multiple input keypad offering a standard 4-6 digit pin code with the option to include a proximity reader for up to 1200 users.
- The range supports pin only, card only or a combination of pin and card operation with two relay outputs, lock and alarm. The keypad accepts a 125KHZ EM proximity card and uses two zones. Zone 1 offers up to 1100 Pin & Card holders and Zone 2 allows up to 100 Pin & Card holders.
- The design has a lock output of up to 2 amps and an alarm output of 20 amps, both relays are normally open and closed settable. The keypads accept both; 12-18V AC and 12€"24V DC power inputs.
- The unit is IP65 rated which means it can be installed in the most extreme of environments as the wiring has total protection against the ingress of dust and the unit is protected against jets of water. The strong Zinc Alloy Electroplated case also offers a reasonable amount of protection against vandalism.
- The keys are back lit for easy visibility in low lit areas such as porches, under canopies and in areas with little or no street lighting. The slim line keypad is just 58mm wide enabling it to be fitted to most architraves.

## Features

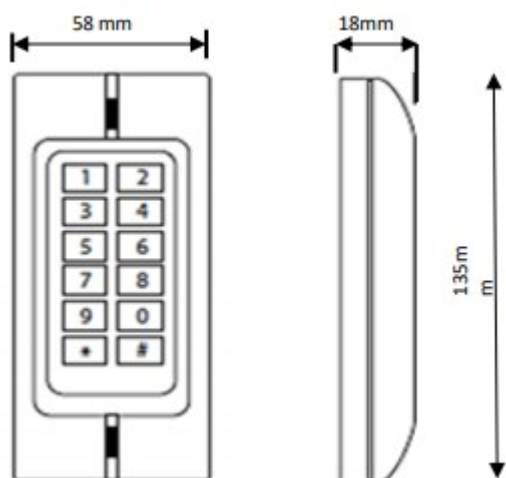
- Two relays operation, lock and alarm
- Pulse mode, Toggle mode
- Zone 1: up to 1100 Pin & Card holders
- Zone 2: up to 100 Pin & Card holders
- Standalone keypad card reader
- Pin length: 4-6 digits
- Card type: 125KHZ EM card
- Block enrolment, can enrol 1200 consecutive cards within 10 seconds
- Waterproof, conforms to IP65
- Strong Zinc Alloy Electroplated anti-vandal case
- 1200 uses, supports Card, PIN, Card + PIN
- Backlight keypad
- 12-18V AC and 12V-24V DC power input



## Finish

- Satin Stainless Steel

## Size Information



- 135mm x 58mm x 18mm

# Fixings

- Supplied with matching screws.

# Unit Of Sale

- Sold individually - Each

## Products in this set

---



48741.1 - Keypad With Proximity FOB Reader - 12-24AC/DC & 12V DC - 135mm x 58mm - Satin Stainless Steel - Each