

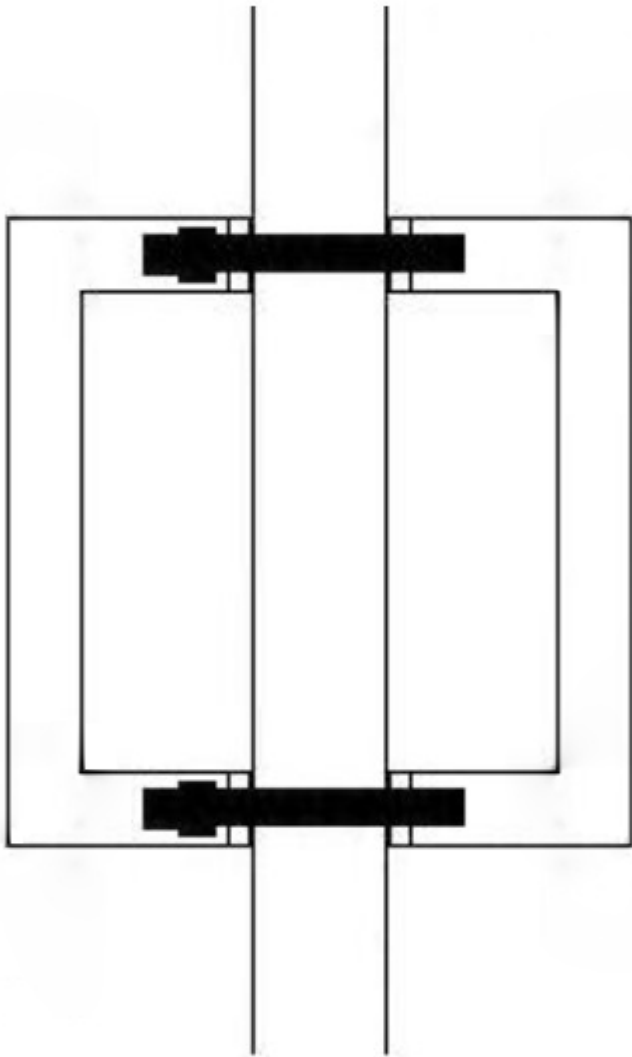
Mitred Knurled Back To Back Pull Handle - Matt Black

Product Images



Description

- Mitred knurled pull handle
- Ideal for internal doors and external entrance doors
- Back to back fixing pair allows for handles to be fitted to both sides of the door
- Suitable for use on timber and glass doors
- To suit doors up to 54mm thick
- Includes fixings for glass and wooden doors



Above diagram shows how a bolt through pull handle is fitted to a wooden door

Base Material

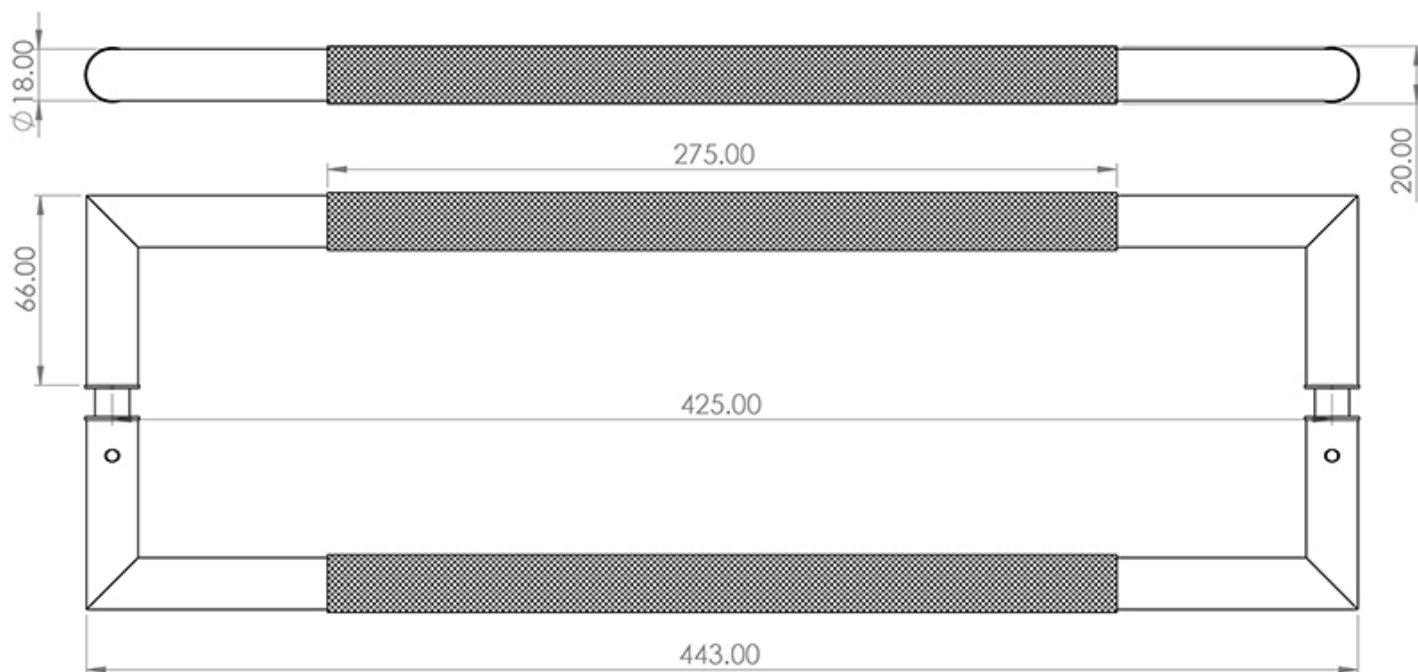
- Made from grade 304 stainless steel

Finish

- Matt Black

Dimensions

- 443mm Overall (425mm Bolt Centres)
- Suitable for doors up to 54mm thick



Important Info Before You Buy

- Suitable for wooden & glass doors
- Includes fixings for glass and wooden doors
- Pull handles are best suited for areas of high or heavy use such as offices, schools and public buildings
- This pull handle is sold per pair

Products in this set



49145.1 - Mitred Knurled Back To Back Pull Handle - 443mm Overall (425mm Bolt Centres) - Matt Black - Pair