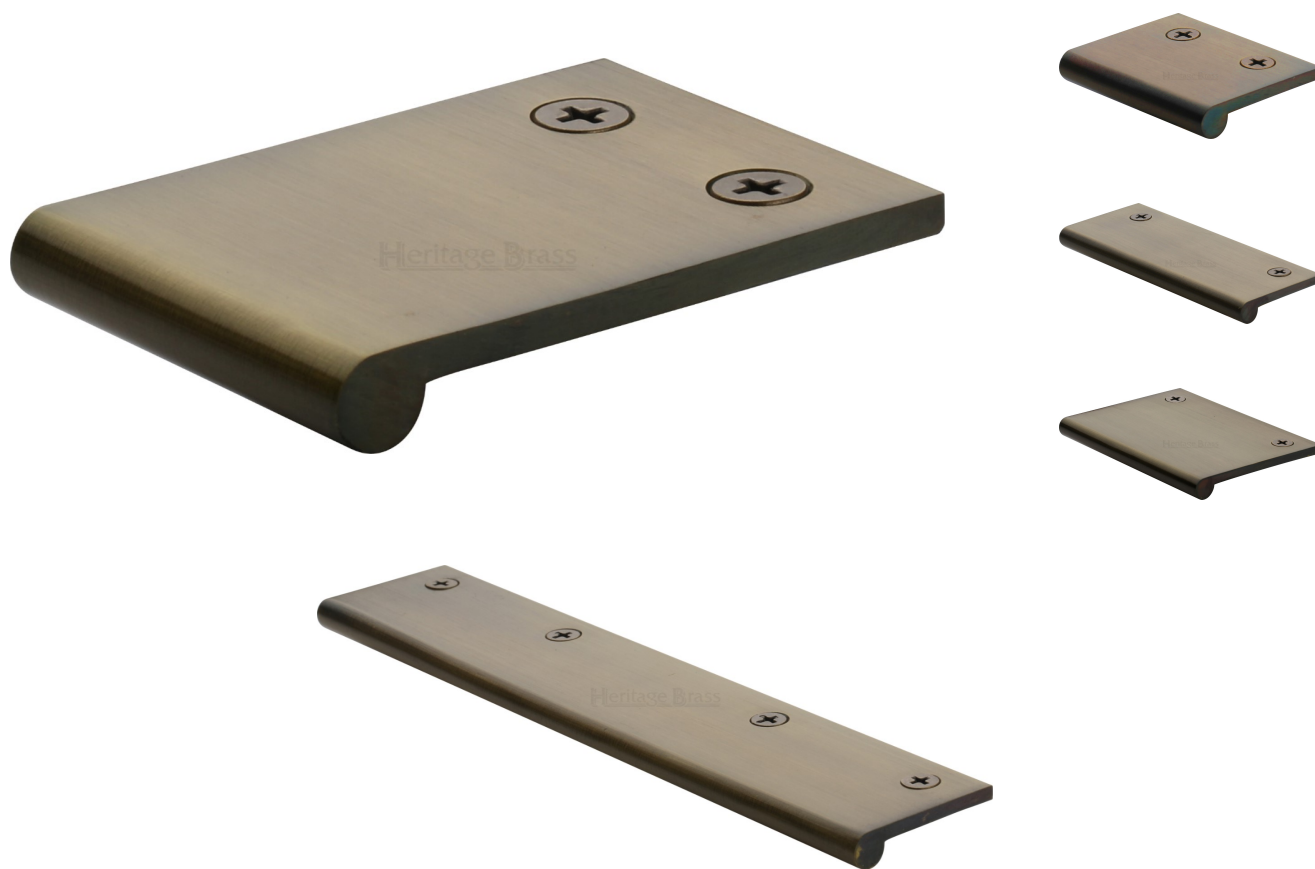


Face Fixing Finger Edge Pull - With Rounded Edge Design - Available In 6 Sizes - Antique Brass (Gloss Lacquered)

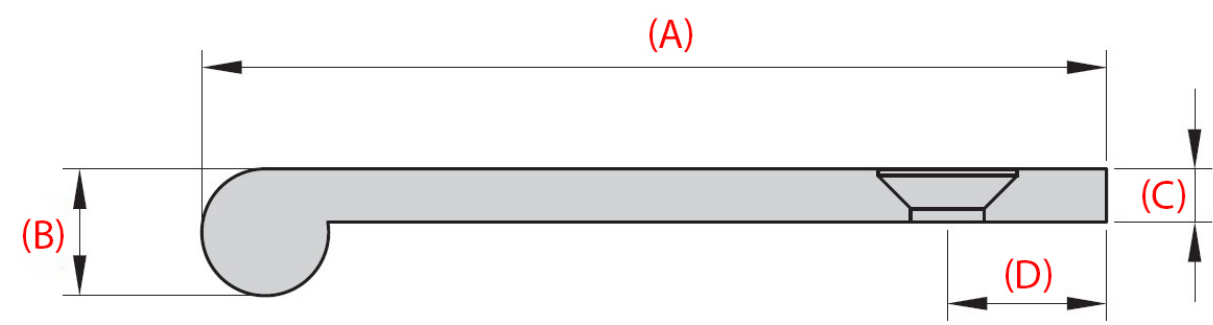
Product Images



Description

- Face fixing edge pull handle
- Rounded edge design
- Sleek, minimal design ideal for those looking for a small discreet handle to open a drawer or door with
- Available in 6 sizes up to 200mm wide
- Face fix design via matching wood screws
- Suitable for use on kitchen cabinet doors, wardrobes, cupboard doors and drawers

Size Details



Item Code	Overall Width	Projection (A)	Edge Diameter (B)	Thickness (C)	Screw Backset(D)	Number Of Fixing Holes
49252.1	50mm	38mm	8mm	3mm	9mm	2
49252.2	100mm	38mm	8mm	3mm	9mm	2
49252.3	200mm	38mm	8mm	3mm	9mm	4
49252.4	50mm	68mm	10mm	4mm	12mm	2
49252.5	100mm	68mm	10mm	4mm	12mm	2
49252.6	200mm	68mm	10mm	4mm	12mm	4

Base Material

- Made from solid brass

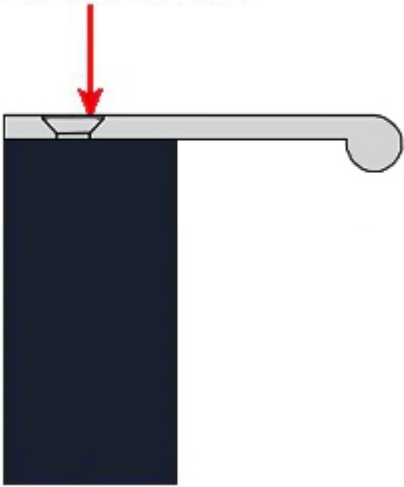
Finish Details

- Antique Brass

Fixings

- The edge pull is fitted via countersunk wood screws from the top face of the handle - see below diagram

Screw Fix From The Top
Via Wood Screws



- Supplied with matching countersunk slotted wood screws

Usage

- Suitable for internal or external use

Unit Of Sale

- Edge pull handles are sold individually - each

Products in this set



49252.1 - Face Fixing Finger Edge Pull - With Rounded Edge Design - 50mm x 38mm - Antique Brass (Gloss Lacquered) - Each



49252.2 - Face Fixing Finger Edge Pull - With Rounded Edge Design - 100mm x 38mm - Antique Brass (Gloss Lacquered) - Each



49252.3 - Face Fixing Finger Edge Pull - With Rounded Edge Design - 200mm x 38mm - Antique Brass (Gloss Lacquered) - Each



49252.4 - Face Fixing Finger Edge Pull - With Rounded Edge Design - 50mm x 68mm - Antique Brass (Gloss Lacquered) - Each



49252.5 - Face Fixing Finger Edge Pull - With Rounded Edge Design - 100mm x 68mm - Antique Brass (Gloss Lacquered) - Each



49252.6 - Face Fixing Finger Edge Pull - With Rounded Edge Design - 200mm x 68mm - Antique Brass (Gloss Lacquered) - Each