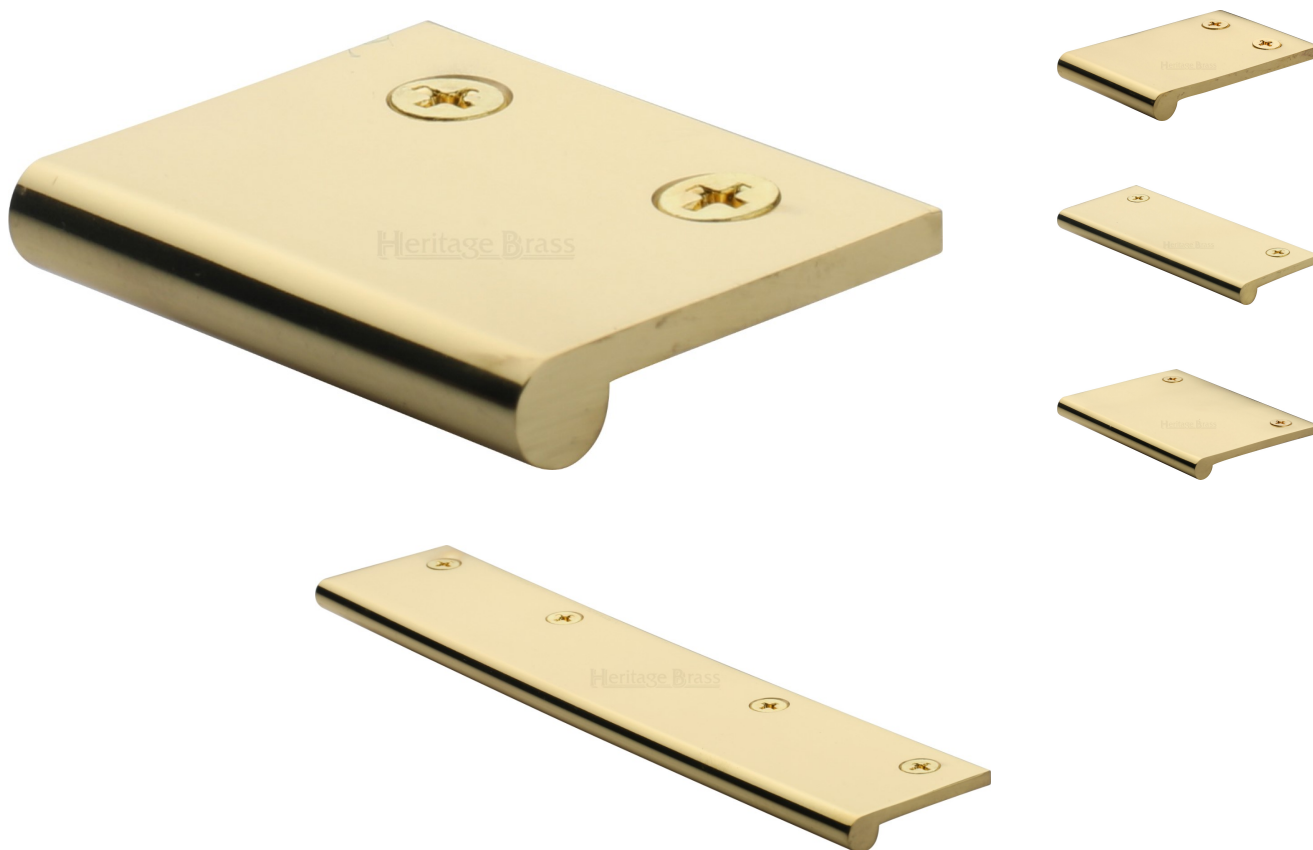


## Face Fixing Finger Edge Pull - With Rounded Edge Design - Available In 6 Sizes - Polished Brass (Lacquered)

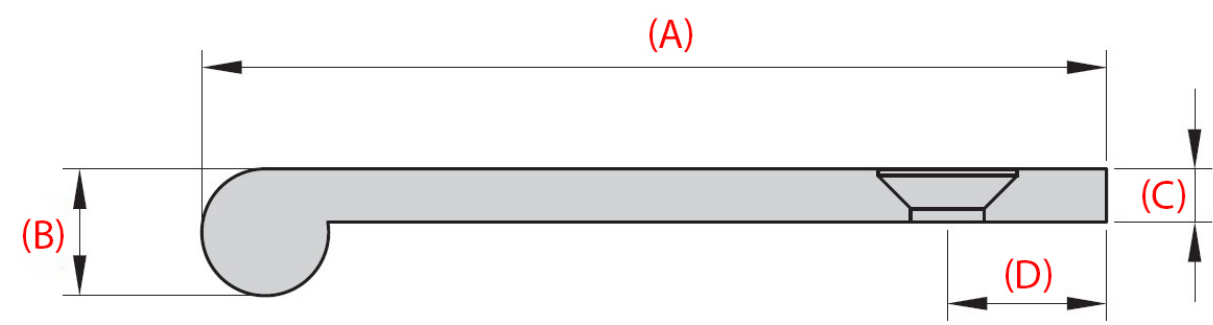
### Product Images



### Description

- Face fixing edge pull handle
- Rounded edge design
- Sleek, minimal design ideal for those looking for a small discreet handle to open a drawer or door with
- Available in 6 sizes up to 200mm wide
- Face fix design via mPBching wood screws
- Suitable for use on kitchen cabinet doors, wardrobes, cupboard doors and drawers

# Size Details



| Item Code | Overall Width | Projection (A) | Edge Diameter (B) | Thickness (C) | Screw Backset(D) | Number Of Fixing Holes |
|-----------|---------------|----------------|-------------------|---------------|------------------|------------------------|
| 49258.1   | 50mm          | 38mm           | 8mm               | 3mm           | 9mm              | 2                      |
| 49258.2   | 100mm         | 38mm           | 8mm               | 3mm           | 9mm              | 2                      |
| 49258.3   | 200mm         | 38mm           | 8mm               | 3mm           | 9mm              | 4                      |
| 49258.4   | 50mm          | 68mm           | 10mm              | 4mm           | 12mm             | 2                      |
| 49258.5   | 100mm         | 68mm           | 10mm              | 4mm           | 12mm             | 2                      |
| 49258.6   | 200mm         | 68mm           | 10mm              | 4mm           | 12mm             | 4                      |

## Base MPBerial

- Made from solid brass

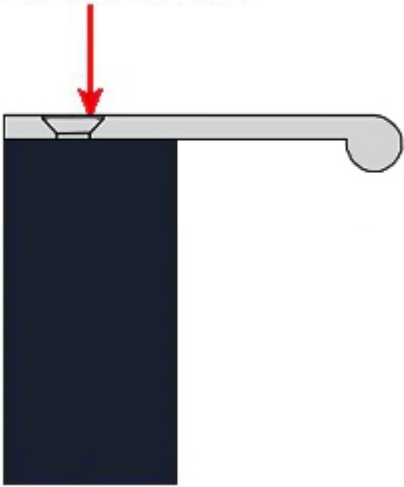
## Finish Details

- Polished Brass

## Fixings

- The edge pull is fitted via countersunk wood screws from the top face of the handle - see below diagram

Screw Fix From The Top  
Via Wood Screws



- Supplied with mPBching countersunk slotted wood screws

# Usage

- Suitable for internal or external use

# Unit Of Sale

- Edge pull handles are sold individually - each

## Products in this set



49258.1 - Face Fixing Finger Edge Pull - With Rounded Edge Design - 50mm x 38mm - Polished Brass (Lacquered) - Each



49258.2 - Face Fixing Finger Edge Pull - With Rounded Edge Design - 100mm x 38mm - Polished Brass (Lacquered) - Each



49258.3 - Face Fixing Finger Edge Pull - With Rounded Edge Design - 200mm x 38mm - Polished Brass (Lacquered) - Each



49258.4 - Face Fixing Finger Edge Pull - With Rounded Edge Design - 50mm x 68mm - Polished Brass (Lacquered) - Each



49258.5 - Face Fixing Finger Edge Pull - With Rounded Edge Design - 100mm x 68mm - Polished Brass (Lacquered) - Each



49258.6 - Face Fixing Finger Edge Pull - With Rounded Edge Design - 200mm x 68mm - Polished Brass (Lacquered) - Each