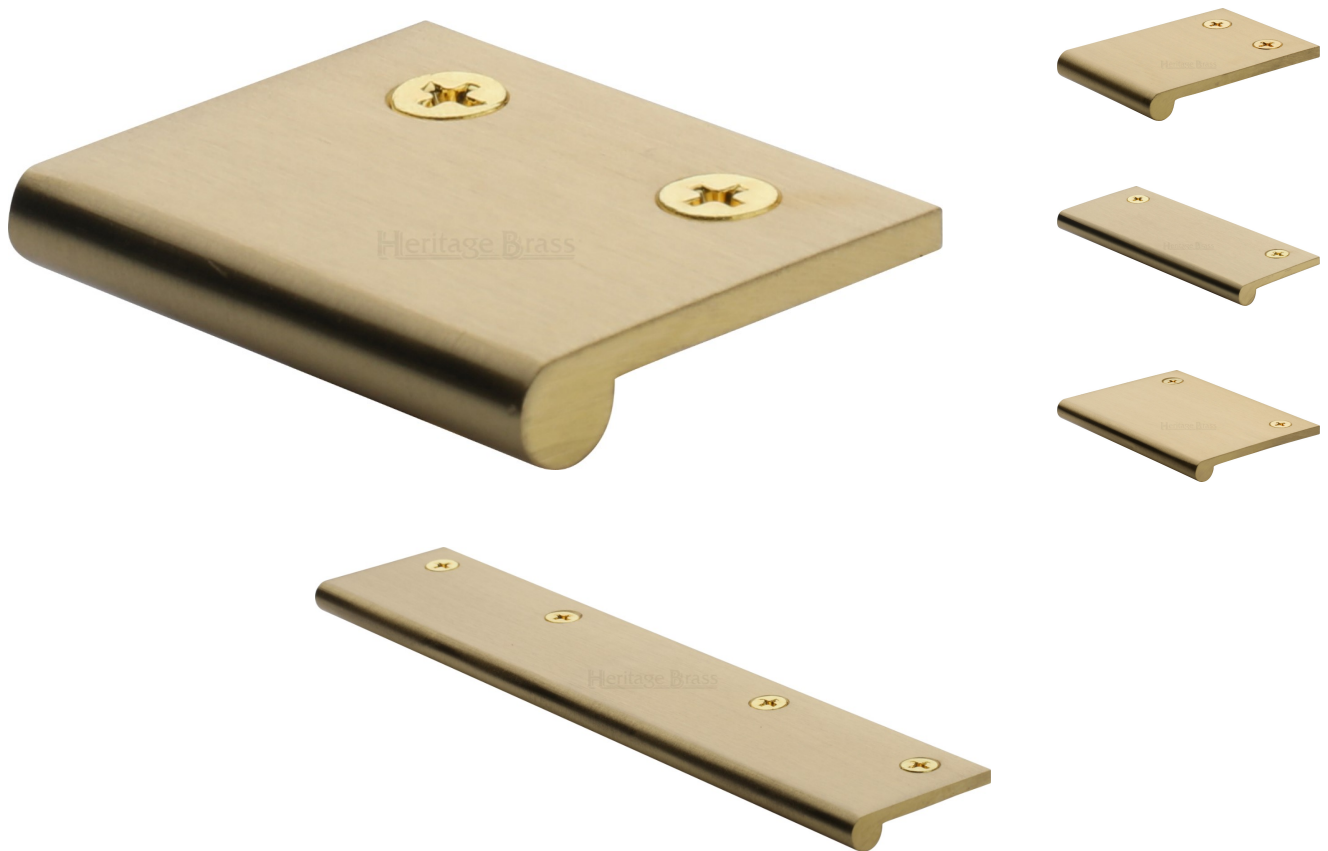


---

## Face Fixing Finger Edge Pull - With Rounded Edge Design - Available In 6 Sizes - Satin Brass (Lacquered)

### Product Images

---

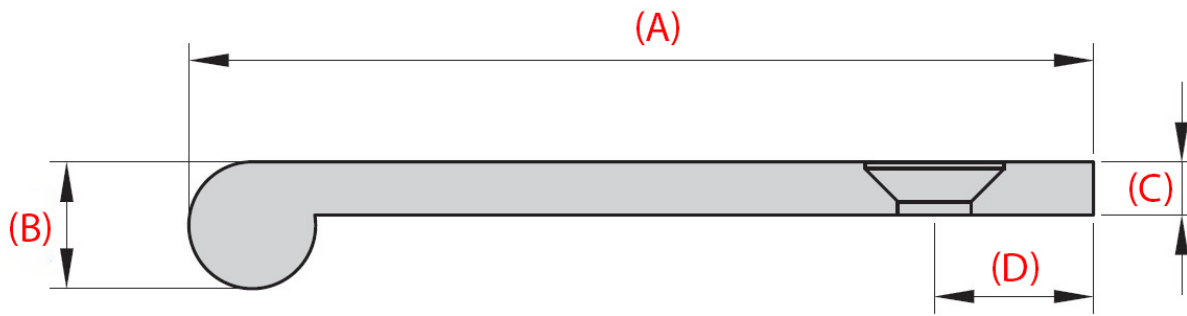


### Description

---

- Face fixing edge pull handle
- Rounded edge design
- Sleek, minimal design ideal for those looking for a small discreet handle to open a drawer or door with
- Available in 6 sizes up to 200mm wide
- Face fix design via mSBching wood screws
- Suitable for use on kitchen cabinet doors, wardrobes, cupboard doors and drawers

## Size Details



Item Code	Overall Width	Projection (A)	Edge Diameter (B)	Thickness (C)	Screw Backset(D)	Number Of Fixing Holes
49259.1	50mm	38mm	8mm	3mm	9mm	2
49259.2	100mm	38mm	8mm	3mm	9mm	2
49259.3	200mm	38mm	8mm	3mm	9mm	4
49259.4	50mm	68mm	10mm	4mm	12mm	2
49259.5	100mm	68mm	10mm	4mm	12mm	2
49259.6	200mm	68mm	10mm	4mm	12mm	4

## Base MSBerial

- Made from solid brass

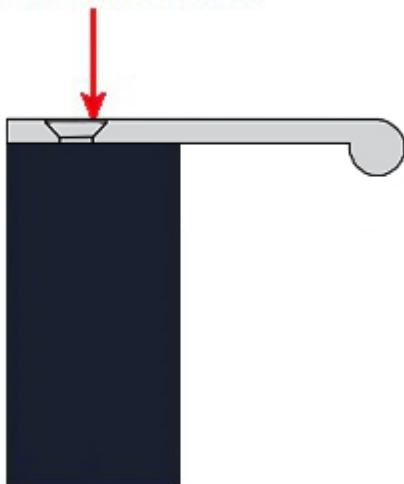
## Finish Details

- Satin Brass

## Fixings

- The edge pull is fitted via countersunk wood screws from the top face of the handle - see below diagram

Screw Fix From The Top  
Via Wood Screws



- Supplied with mSBching countersunk slotted wood screws

## Usage

- Suitable for internal or external use

## Unit Of Sale

- Edge pull handles are sold individually - each

### Products in this set

---



49259.1 - Face Fixing Finger Edge Pull - With Rounded Edge Design - 50mm x 38mm - Satin Brass (Lacquered) - Each



49259.2 - Face Fixing Finger Edge Pull - With Rounded Edge Design - 100mm x 38mm - Satin Brass (Lacquered) - Each



49259.3 - Face Fixing Finger Edge Pull - With Rounded Edge Design - 200mm x 38mm - Satin Brass (Lacquered) - Each



49259.4 - Face Fixing Finger Edge Pull - With Rounded Edge Design - 50mm x 68mm - Satin Brass (Lacquered) - Each



49259.5 - Face Fixing Finger Edge Pull - With Rounded Edge Design - 100mm x 68mm - Satin Brass (Lacquered) - Each



49259.6 - Face Fixing Finger Edge Pull - With Rounded Edge Design - 200mm x 68mm - Satin Brass (Lacquered) - Each