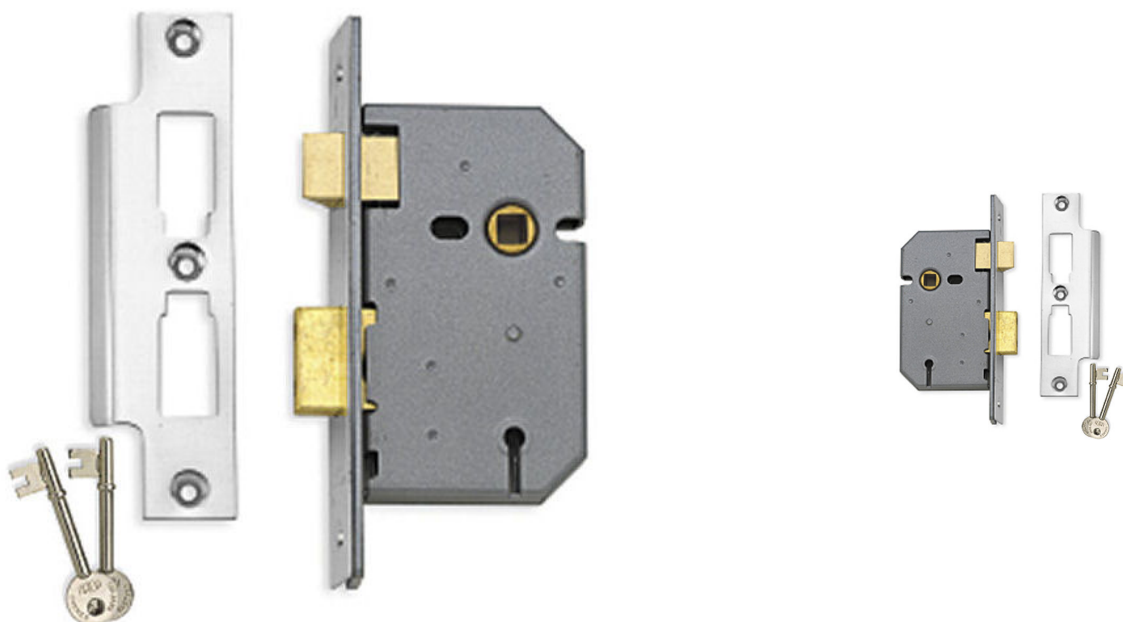


3 Lever Mortice Sash Lock - 102mm (4 Inch) Case Depth - Satin Chrome

Product Images



Description

- 102mm deep case (4 inches).
- Low level security.
- For use on doors that require door handles and need to be locked via a standard "chubb" style key.
- Must be used in conjunction with some form of door handle.
- Comes supplied with a satin chrome (brushed finish) forend and frame mounted strike plate.

Operation

- Latch is withdrawn via a lever handle from either side of the door (handles sold separately).
- Deadbolt is locked and un-locked via the supplied cut keys.

Features

- Solid brass deadbolt and latch.
- Medium weight spring strength ideal for use with sprung lever furniture.

- Bolt through facility for bolt together fixing lever handles and accessories at 38mm centres.
- 8mm x 8mm spindle follower (to suit standard UK size spindles).
- Reversible strike plate.

Security Level

- Low level security.
- Suitable for use on internal doors in residential properties.
- Basic 3 lever cut key.

Finish

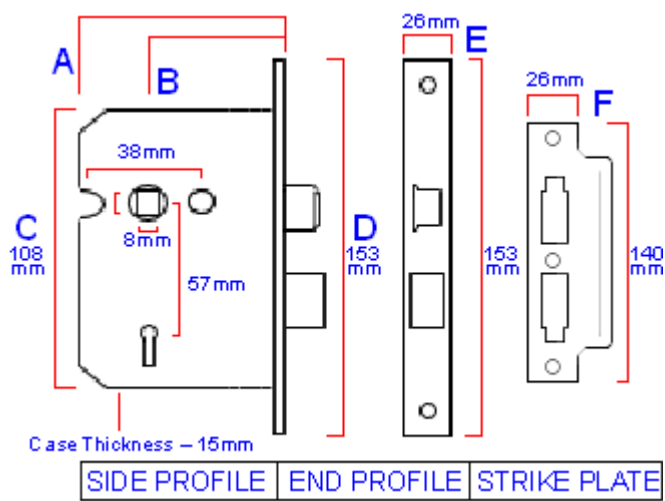
- Satin chrome plated - (brushed finish ideal for matching with satin chrome and stainless steel products).

Alternative Finishes Available

- Polished brass.

Dimensions

- 102mm case depth (83mm backset).



Item Code	Lock Case Depth (A)	Backset To Keyhole (B)
20177.1	102mm	83mm

Options Available To Order

- Keyed alike - if you would like a number of these locks all to operate under one key please contact us for details and prices.

Rebate Kit For Double Rebated Doors

- 40829.1 - 13mm satin chrome rebate kit.

Unit Of Sale

- Each - (1 x lock case supplied with forend, strike plate and 2 keys).

Products in this set



20177.1 - Union 3 Lever Mortice Sash Lock - 102mm Case Depth (83mm Backset) - Satin Chrome