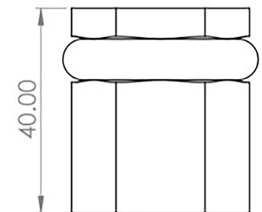
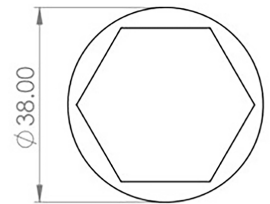


---

## Hexagonal Pattern Floor Mounted Door Stop - 40mm x 38mm - Satin Nickel

### Product Images

---



### Description

---

- Hexagonal pattern floor mounted door stop
- Two part design allows for concealed fixing
- Plain head with black rubber ring

- Designed to stop doors from hitting a wall when opened too far

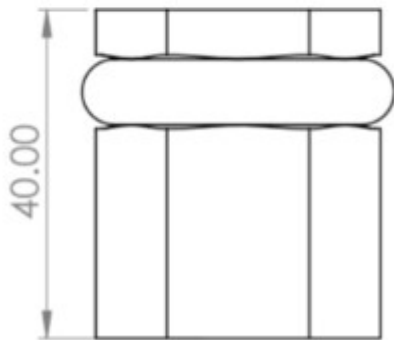
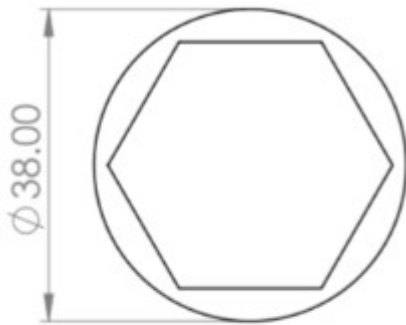
## Base Material

- Made from solid brass

## Finish Details

- Satin Nickel

## Size Information



- 38mm Overall diameter
- 40mm Projection

## Fixings

- Two part design allows for concealed fixing with a single fixing screw

## Usage

- Suitable for residential use
- Suitable for internal use

## Unit Of Sale

- Sold individually (each)



49655.1 - Hexagonal Pattern Floor Mounted Door Stop - 40mm x 38mm - Satin Nickel - Each

**Products in this set**