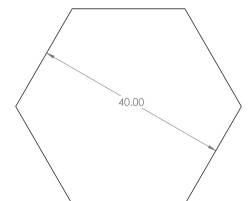
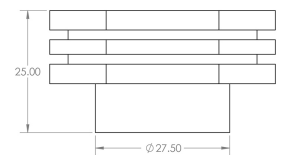
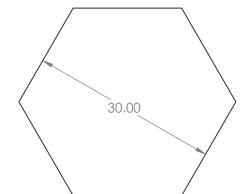
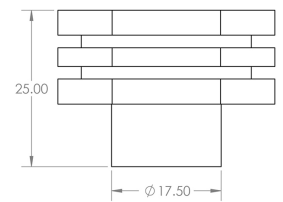
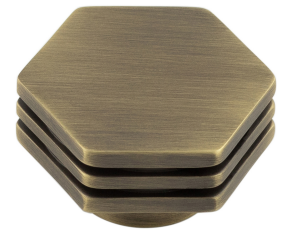
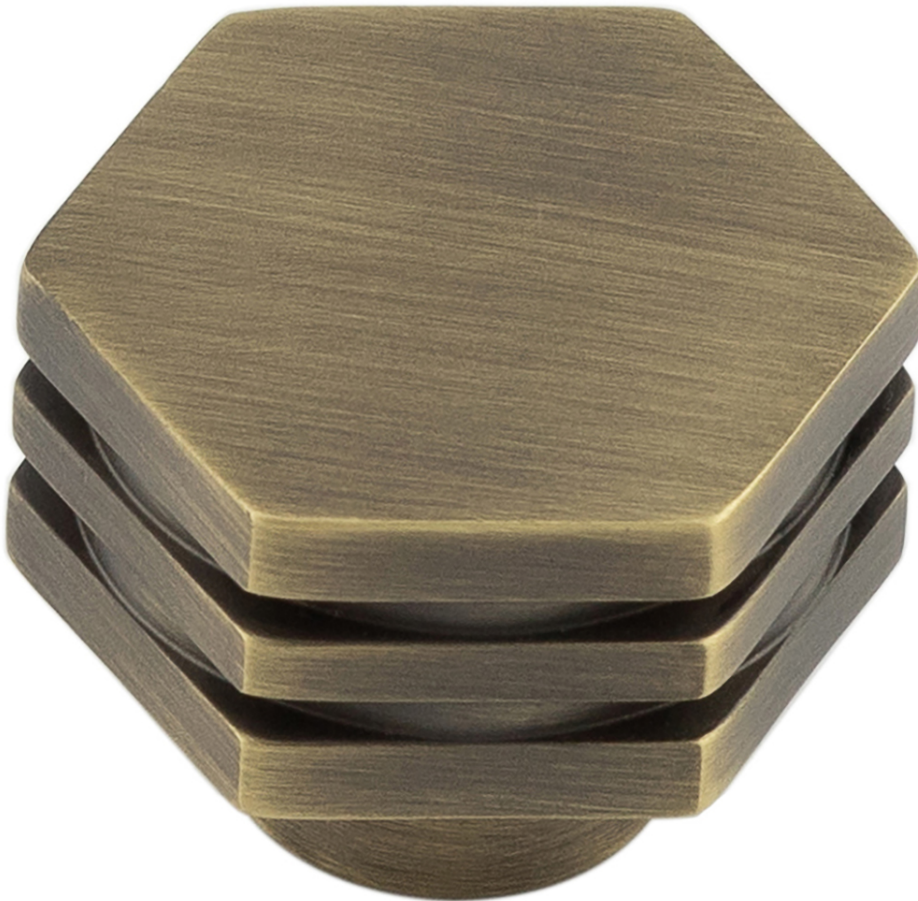


## Hexagonal Stepped Detail Cupboard Knob - Available In Two Sizes - Antique Brass (Lacquered)

### Product Images



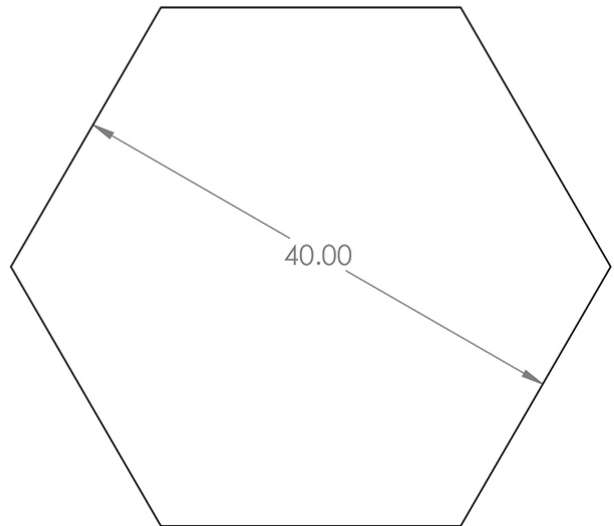
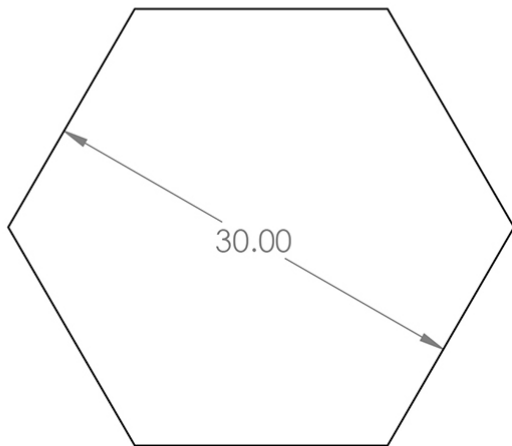
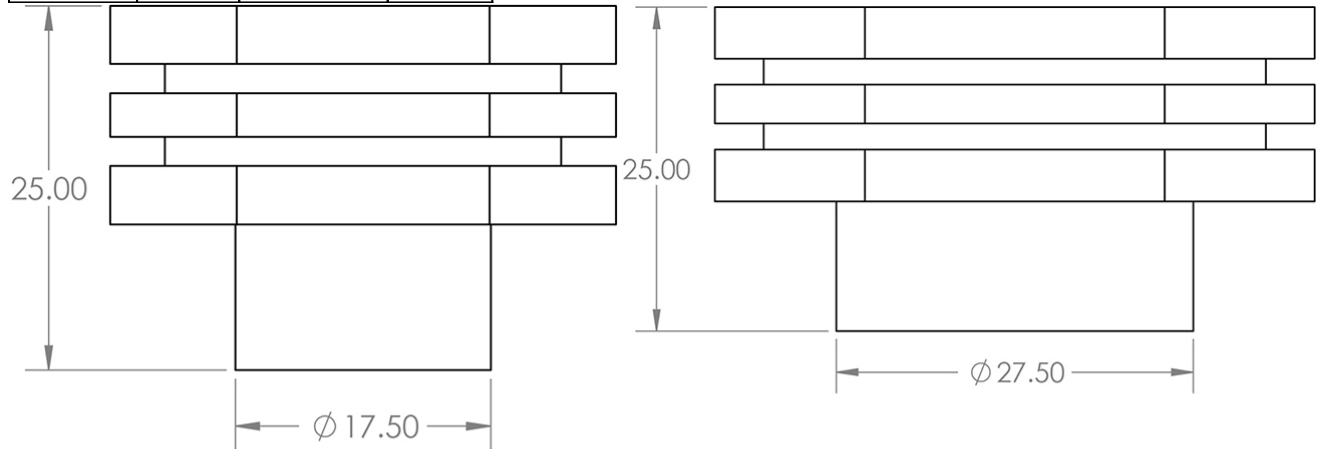
### Description

- Hexagonal stepped detail cabinet knob
- This popular design is ideal for use on modern or contemporary units including, kitchen cabinet doors, wardrobes, cupboard doors and drawers

# Size Details

- Available In Two Sizes

Item Code	Diameter	Base Diameter	Projection
49906.1	30mm	18mm	25mm
49906.2	40mm	28mm	25mm



## Base Material

- Made from solid brass

## Finish

- Antique Brass

## Fixings

- This handle is fitted via a M4 bolt from the rear of the door / drawer - see below diagram



- Bolt through fixings provide a superior strong fixing allowing this knob to be fitted to tall or heavy doors
- Comes supplied with M4 (diameter) x 25mm & 45mm (long) bolts, the 25mm long bolts are to suit 18mm cupboards and the 45mm designed to be cut down to length on site for thicker doors
- To save having to cut down the bolts provided we sell a range of M4 fixing bolts in various lengths

## Usage

- Suitable for internal use

## Unit Of Sale

- These cupboard knobs are sold individually - (Each)

### Products in this set

---



**49906.1 - Hexagonal Stepped Detail Cupboard Knob - 30mm Diameter - Antique Brass (Lacquered) - Each**



**49906.2 - Hexagonal Stepped Detail Cupboard Knob - 40mm Diameter - Antique Brass (Lacquered) - Each**