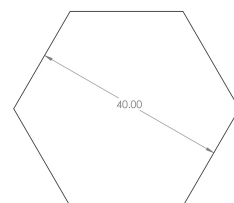
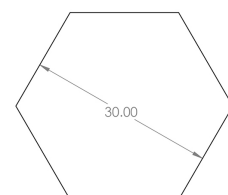
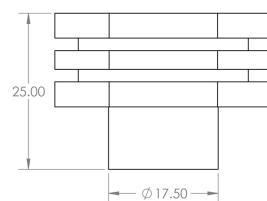
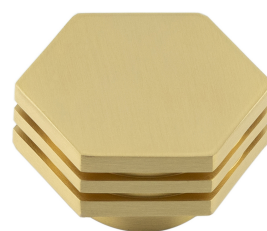


Hexagonal Stepped Detail Cupboard Knob - Available In Two Sizes - Satin Brass (Lacquered)

Product Images



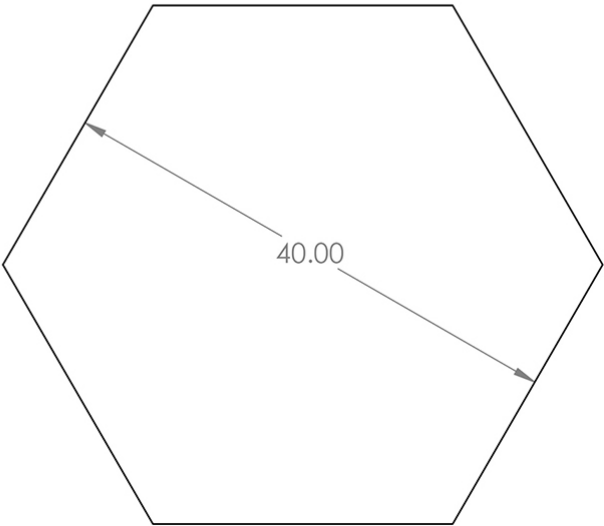
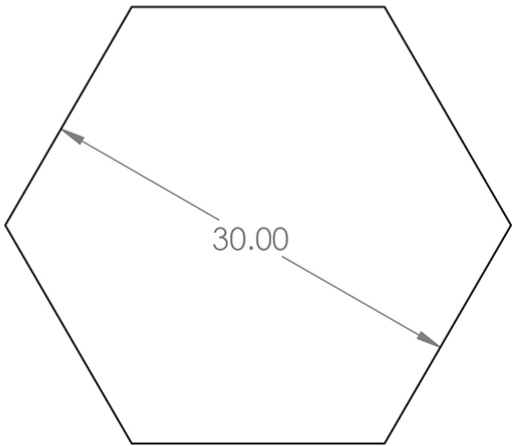
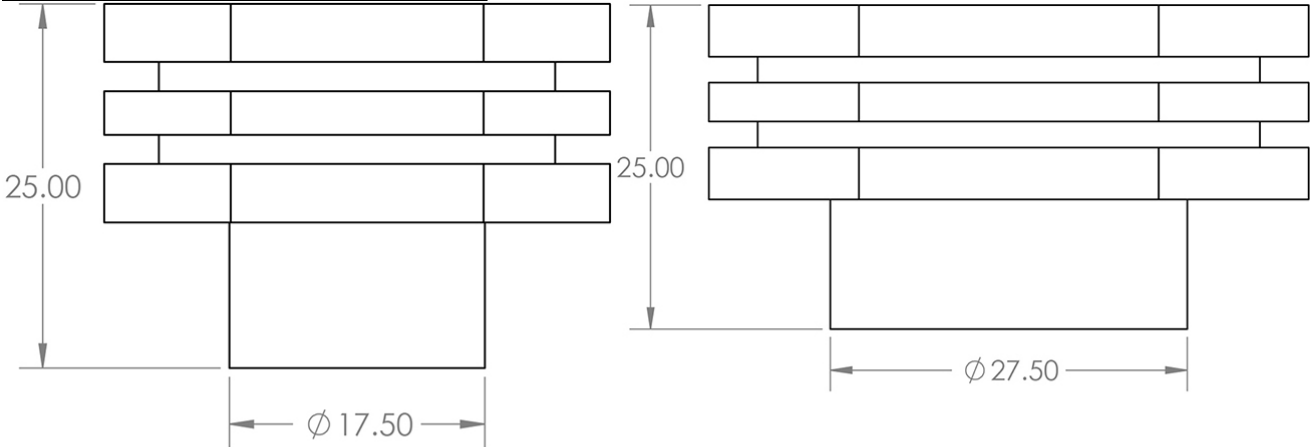
Description

- Hexagonal stepped detail cabinet knob
- This popular design is ideal for use on modern or contemporary units including, kitchen cabinet doors, wardrobes, cupboard doors and drawers

Size Details

- Available In Two Sizes

| Item Code | Diameter | Base Diameter | Projection |
|-----------|----------|---------------|------------|
| 49912.1 | 30mm | 18mm | 25mm |
| 49912.2 | 40mm | 28mm | 25mm |



Base Material

- Made from solid brass

Finish

- Satin Brass

Fixings

- This handle is fitted via a M4 bolt from the rear of the door / drawer - see below diagram



- Bolt through fixings provide a superior strong fixing allowing this knob to be fitted to tall or heavy doors
- Comes supplied with M4 (diameter) x 25mm & 45mm (long) bolts, the 25mm long bolts are to suit 18mm cupboards and the 45mm designed to be cut down to length on site for thicker doors
- To save having to cut down the bolts provided we sell a range of M4 fixing bolts in various lengths

Usage

- Suitable for internal use

Unit Of Sale

- These cupboard knobs are sold individually - (Each)

Products in this set



49912.1 - Hexagonal Stepped Detail Cupboard Knob - 30mm Diameter - Satin Brass (Lacquered) - Each



49912.2 - Hexagonal Stepped Detail Cupboard Knob - 40mm Diameter - Satin Brass (Lacquered) - Each