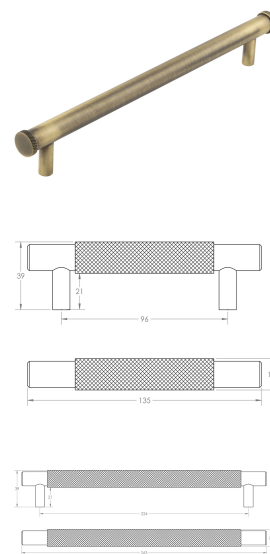
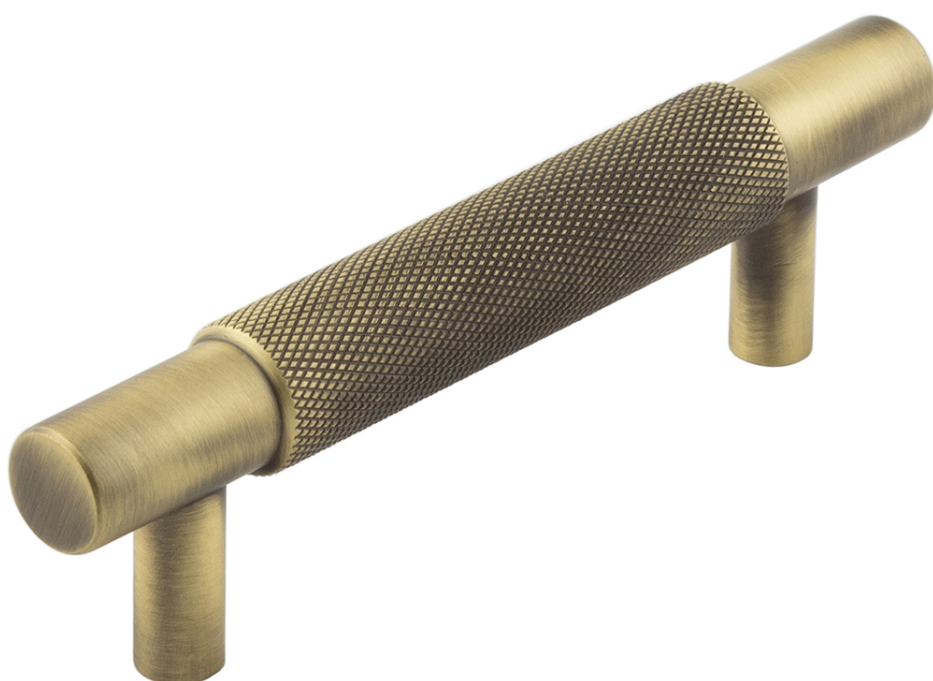


## Diamond Knurled Grip T-Bar Cabinet Handle - Available In Two Sizes - Antique Brass (Lacquered)

### Product Images



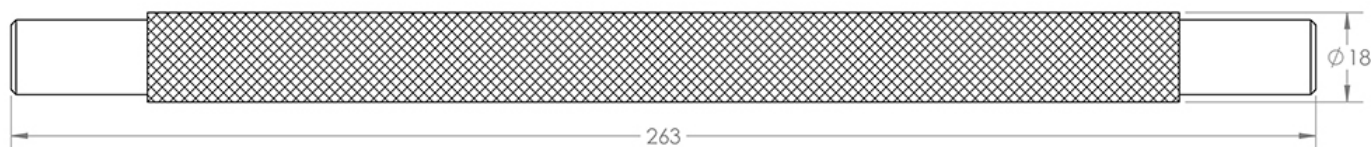
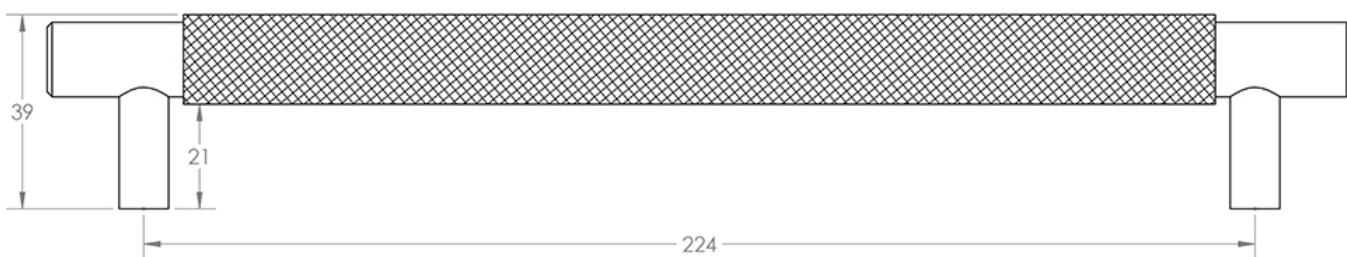
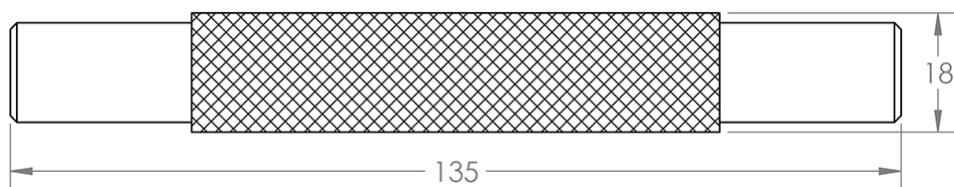
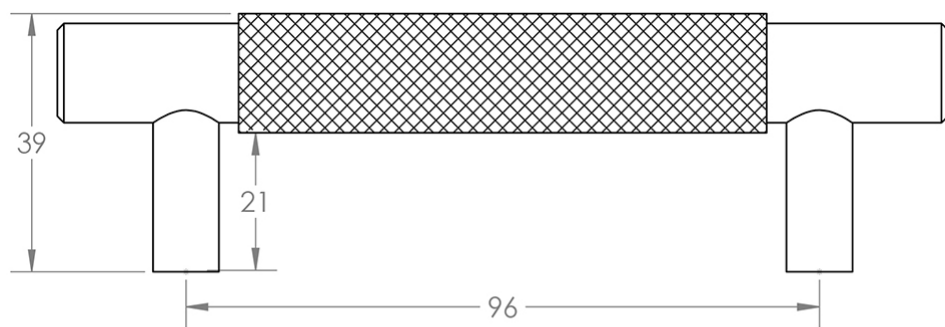
### Description

- Diamond knurled grip T-Bar cabinet pull handle
- Supplied with M4 fixing bolts
- Ideal for use on contemporary units including, kitchen cabinet doors, wardrobes, cupboard doors and drawers

### Size Details

- Available In Two Sizes

Item code	Overall Length	Fixing Centres	Pull Diameter	Projection
49942.1	135mm	96mm	18mm	39mm
49942.2	263mm	224mm	18mm	39mm



## Base Material

- Made from solid brass

## Finish Details

- Satin nickel

## Fixings

- This handle is fitted via M4 bolts from the rear of the door / drawer - see below diagram



- Bolt through fixings provide a superior strong fixing allowing this handle to be fitted to tall or heavy doors

- Supplied with M4 (diameter) x 25mm (long) bolts - Suitable for use on 18mm thick doors
- For doors thicker than 18mm, longer M4 fixing bolts are available to buy separately

## Usage

- Suitable for internal use

## Unit Of Sale

- This cabinet handle is sold individually - (Each)

### Products in this set

---



**49942.1 - Diamond Knurled Grip T-Bar Cabinet Handle - 135mm Overall Length (96mm Fixing Centres) - Antique Brass (Lacquered) - Each**



**49942.2 - Diamond Knurled Grip T-Bar Cabinet Handle - 263mm Overall Length (224mm Fixing Centres) - Antique Brass (Lacquered) - Each**