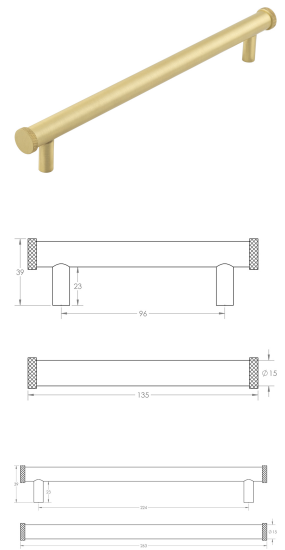


Diamond Knurled T-Bar Cabinet Handle - Available In Two Sizes - Satin Brass (Lacquered)

Product Images



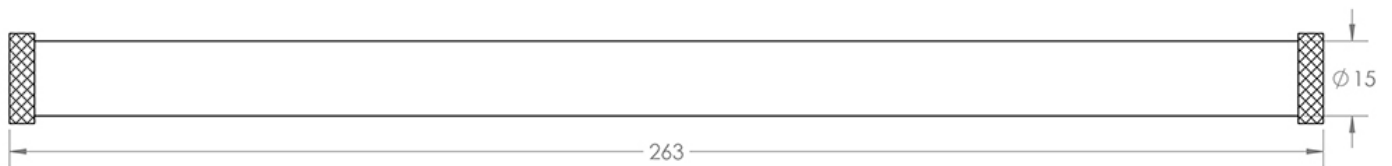
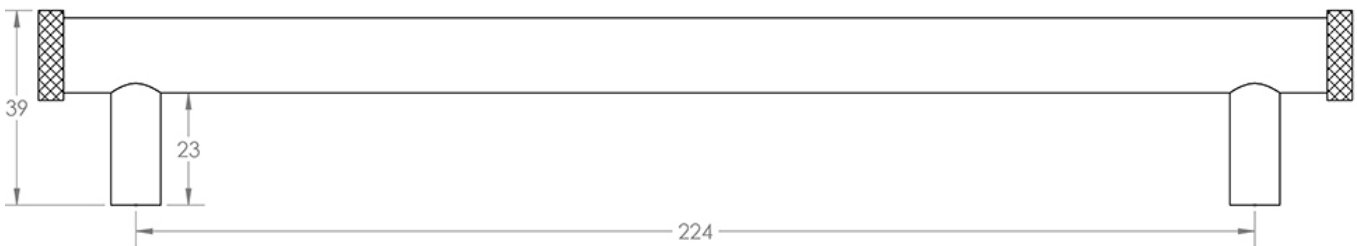
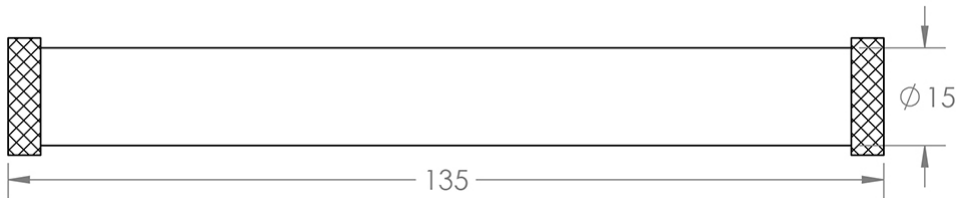
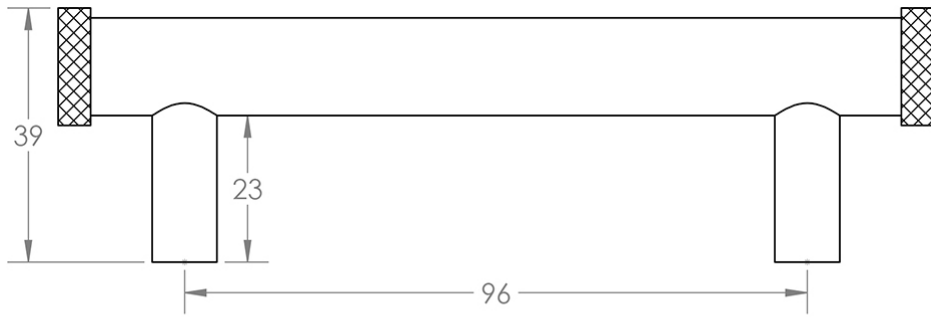
Description

- Diamond knurled T-Bar cabinet pull handle
- Supplied with M4 fixing bolts
- Ideal for use on contemporary units including, kitchen cabinet doors, wardrobes, cupboard doors and drawers

Size Details

- Available In Two Sizes

Item code	Overall Length	Fixing Centres	Pull Diameter	Projection
49943.1	135mm	96mm	15mm	39mm
49943.2	263mm	224mm	15mm	39mm



Base Material

- Made from solid brass

Finish Details

- Satin nickel

Fixings

- This handle is fitted via M4 bolts from the rear of the door / drawer - see below diagram



- Bolt through fixings provide a superior strong fixing allowing this handle to be fitted to tall or heavy doors
- Supplied with M4 (diameter) x 25mm (long) bolts - Suitable for use on 18mm thick doors
- For doors thicker than 18mm, longer M4 fixing bolts are available to buy separately

Usage

- Suitable for internal use

Unit Of Sale

- This cabinet handle is sold individually - (Each)

Products in this set



49943.1 - Diamond Knurled T-Bar Cabinet Handle - 135mm Overall Length (96mm Fixing Centres) - Satin Brass (Lacquered) - Each



49943.2 - Diamond Knurled T-Bar Cabinet Handle - 263mm Overall Length (224mm Fixing Centres) - Satin Brass (Lacquered) - Each