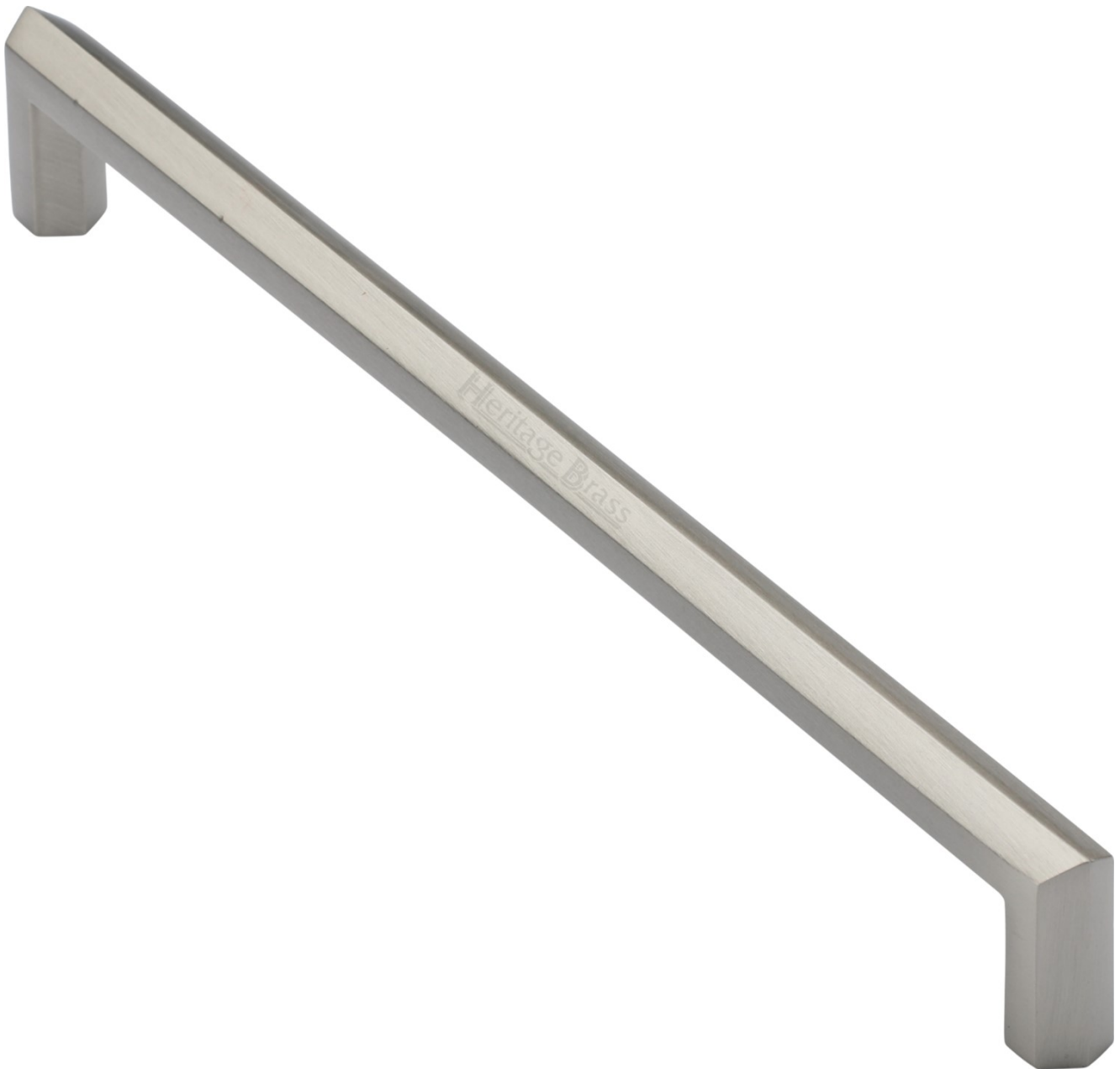

Hex Profile Door Pull Handle - Two Sizes Available - Satin Nickel

Product Images



Description

- Hex Profile Door Pull Handle
- High architectural quality pull handle
- Made from solid brass ideal for internal or external entrance doors
- Bolt through the door design see below diagram



Above diagram shows how a bolt through pull handle is fitted to a wooden door

Base Material

- Solid Brass

Finish

- Satin Nickel

Dimensions



	Bolt centers (A)	Length	Projection (C)
50760.1	305mm	328mm	57mm
50760.2	457mm	480mm	57mm

Important Info Before You Buy

- Suitable for wooden doors
- Pull handles are best suited for areas of high or heavy use such as offices, schools and public buildings
- Pull handles are usually fitted to the PULL side of the door
- A finger plate (push plate) is usually required on the push side of the door to cover the fixing bolts
- This pull handle is sold individually - each

Products in this set



50760.1 - Hex Profile Door Pull Handle - 328mm Length (305mm Centres) - Satin Nickel - Each



50760.2 - Hex Profile Door Pull Handle - 480mm Length (457mm Centres) - Satin Nickel - Each