
Circular Flush Pull Handle - Tested For Use On FD30 Fire Doors - Available In Two Sizes - Satin Stainless Steel

Product Images

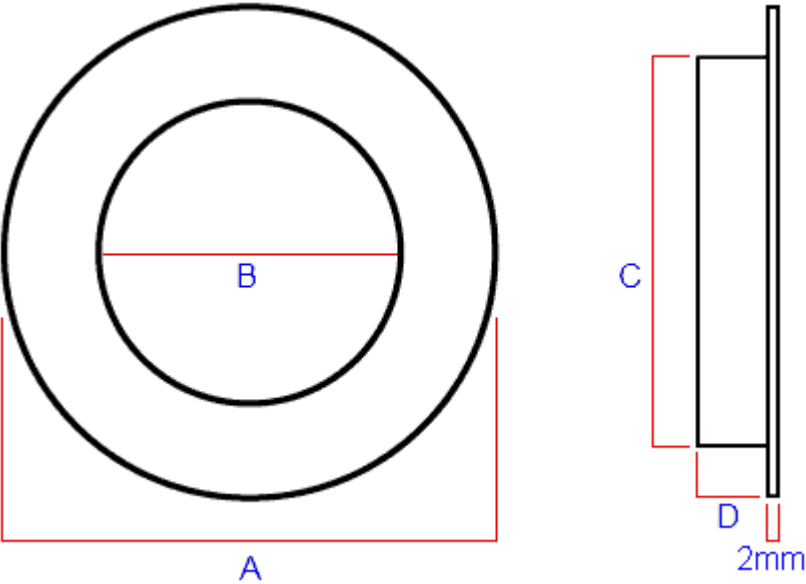


Description

- Contemporary design round, circular shape flush fitting, inset pull handles for sliding doors.
- Suitable for use on full height sliding doors, wardrobe doors and cupboard doors.
- Sleek minimal look thanks to discreet fixings (this item is fixed via wood screws from inside the recess).

- Made from stainless steel this item is a satin (brushed) finish.
- Available in two sizes - 20657.1 - 48mm diameter or 20657.2 - 78mm diameter.
- This item has to be morticed (cut) into the door to allow it to sit fit flush.
- Test for use on FD30 timber fire doors (please check test evidence of your fire door for compatibility).

Size Details



Item Code	Diameter (A)	Opening Diameter (B)	Recess Diameter (C)	Recess Depth (D)	Backplate Thickness
20657.1	48mm	32mm	40mm	11mm	2mm
20657.2	78mm	50mm	60mm	14mm	2mm

Base Material

- Made from stainless steel.

Finish Details

- Satin stainless steel - a grey colour with very slight golden undertones. The raw stainless steel has been satinised "brushed" to produce visible brush marks in the surface of the item. For more information and how to care for this finish please see our