

---

## Circular Flush Pull Handle - Tested For Use On FD30 Fire Doors - Available In Two Sizes - Polished Stainless Steel

### Product Images

---



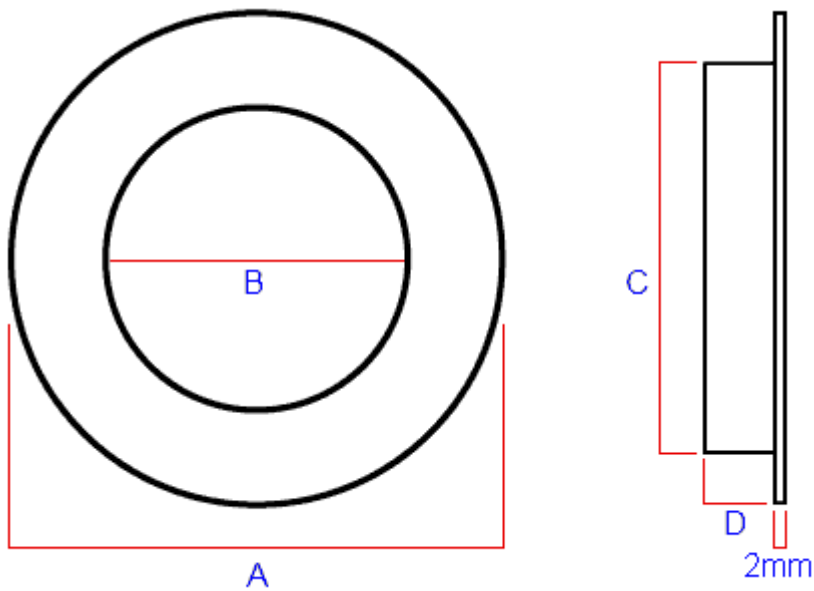
### Description

---

- Contemporary design round, circular shape flush fitting, inset pull handles for sliding doors.

- Suitable for use on full height sliding doors, wardrobe doors and cupboard doors.
- Sleek minimal look thanks to discreet fixings - (this item is fixed via wood screws from inside the recess).
- Made from stainless steel this item is a polished (shiny) finish.
- Available in two sizes - 21823.1 - 48mm diameter or 21823.2 - 78mm diameter.
- This item has to be morticed (cut) into the door to allow it to sit fit flush.
- Test for use on FD30 timber fire doors (please check test evidence of your fire door for compatibility).

## Size Details



Item Code	Diameter (A)	Opening Diameter (B)	Recess Diameter (C)	Recess Depth (D)	Backplate Thickness
21823.1	48mm	32mm	40mm	11mm	2mm
21823.2	78mm	50mm	60mm	14mm	2mm

## Base Material

- Made from stainless steel.

## Finish Details

- Polished stainless steel.

## Alternative Finishes Available

- Satin stainless steel - (Brushed finish).

## Fixings

- This handle is fitted via 2 x wood screws inside the recess of the handle.
- Screws are supplied with this item.

## Usage

- Suitable for internal or external use.
- To fit this handle completely flush a minimum door thickness of 18mm is required.

# Unit Of Sale

- This item is sold individually - (Each)

## Products in this set

---



21823.1 - Circular Flush Pull Handle - Tested For Use On FD30 Fire Doors - 48mm Overall Diameter - Polished Stainless Steel - Each



21823.2 - Circular Flush Pull Handle - Tested For Use On FD30 Fire Doors - 78mm Overall Diameter - Polished Stainless Steel - Each