

Flush Fitting Ring Style Operational Door Handle - Polished Chrome

Product Images



Description

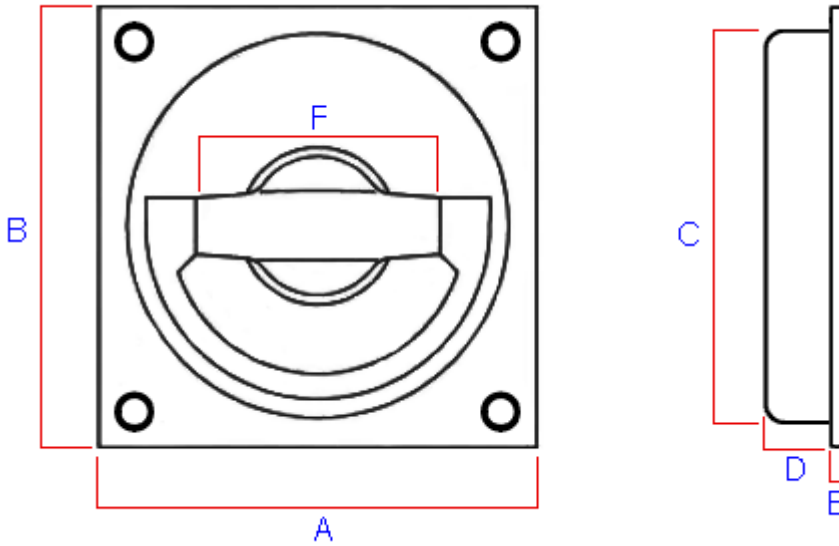
Manufactured in England to high architectural quality in solid brass, the inset design is ideal for use on doors that need to fold back against a wall. This item has a highly polished, shiny chrome finish.

Designed to work with a tubular latch such as our [TLS heavy duty latch](#), this item can be used as a working door handle. There is an 8mm follower built into back of the ring handle to suit a UK standard 8mm x 8mm spindle. This item is designed to be morticed (cut) into the face of a door so it sits flush with the surface.

This product is available one size - 75mm x 75mm (other sizes available to special order).

This item is not held in stock and is only made to order, hence the 3-4 week lead time. If you're looking for a product of the highest quality, it's well worth the wait.

Size Details



Item Code Height (A) Width (B) Recess Diameter (C) Recess Depth (D) Backplate Thickness - (E) Ring Pull Size (Internal Dimension) - (F)

30271.2	75mm	75mm	71mm	12mm	3mm	36mm
---------	------	------	------	------	-----	------

Base Material

- Made from solid brass.

Finish Details

- Polished chrome - highly polished, shiny finish.

Fixings

- This handle is fitted via 4 x countersunk wood screws through the face of the backplate.
- Supplied with matching wood screws.

Usage

- If fitting two flush pulls to a door (one either side) in conjunction with a tubular latch the minimum thickness door required is 44mm.
- Suitable for internal or external use.

Unit Of Sale

- This item is sold individually - (Each)

Products in this set



30271.2 - Flush Fitting Ring Style Operational Door Handle - Polished Chrome - 75mm x 75mm - Each