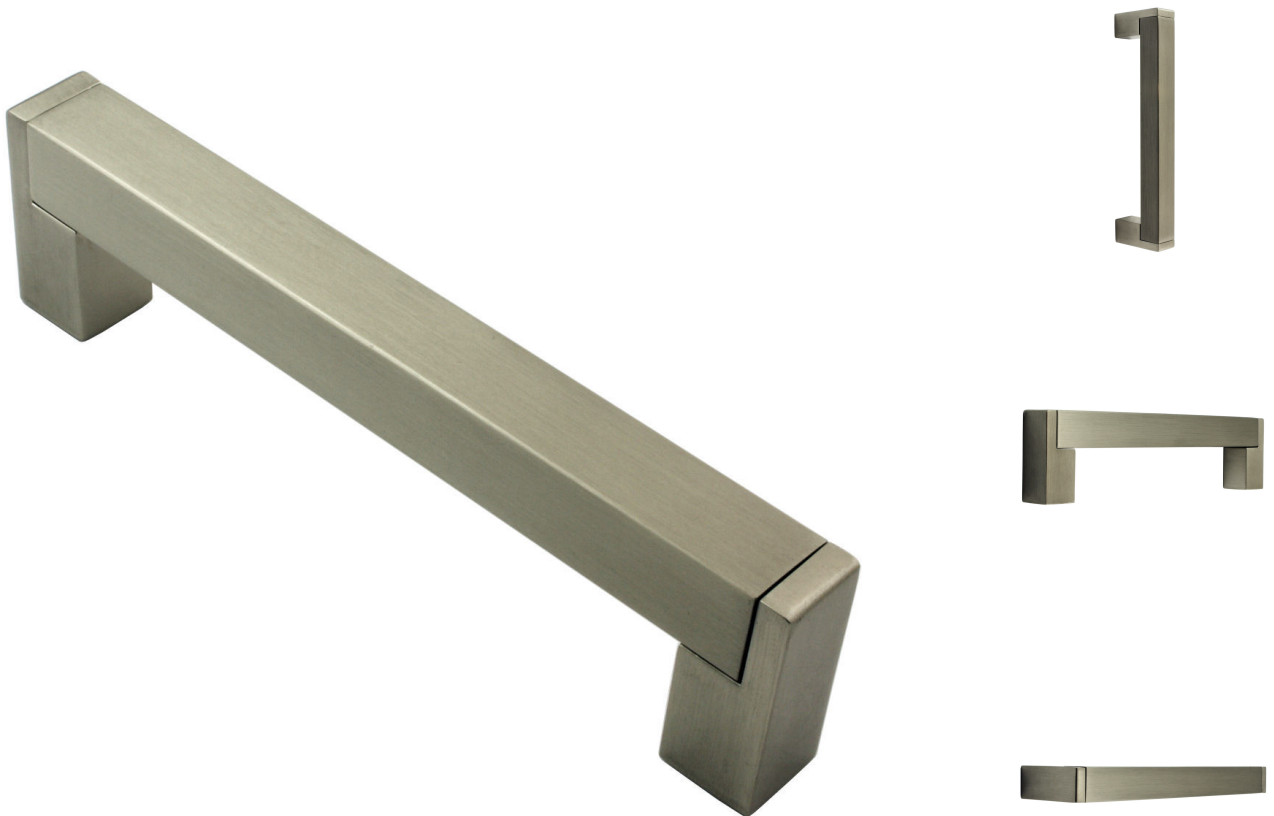


---

## Square Section Cupboard Pull Handle - Available In 6 Lengths - Satin Nickel

### Product Images

---

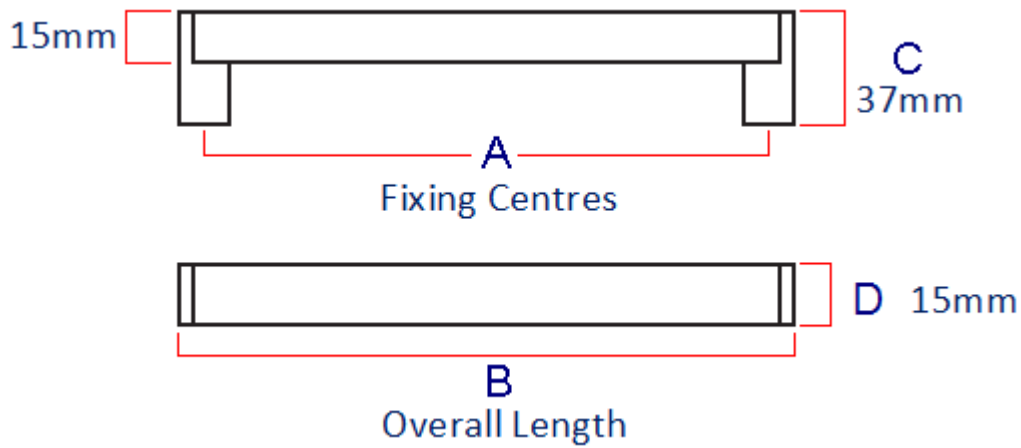


### Description

---

- Contemporary design square shape cabinet handles.
- Chunky 15mm x 15mm square section handle, ideal for use on modern units.
- Brushed satin nickel finish.
- Available in 6 lengths including long sizes up to 463mm long ideal for use on tall wardrobes or long drawers.
- Comes supplied with M4 fixing bolts.
- Suitable for use on kitchen cabinet doors, wardrobes, cupboard doors and drawers.

## Size Details



Item Code	Bolt centers (A)	Overall Length (B)	Projection (C)	Width (D)
30279.1	128mm	143mm	37mm	15mm
30279.2	160mm	175mm	37mm	15mm
30279.3	192mm	207mm	37mm	15mm
30279.4	224mm	239mm	37mm	15mm
30279.5	320mm	335mm	37mm	15mm
30279.6	448mm	463mm	37mm	15mm

## Base Material

- Made from a zinc alloy

## Finish Details

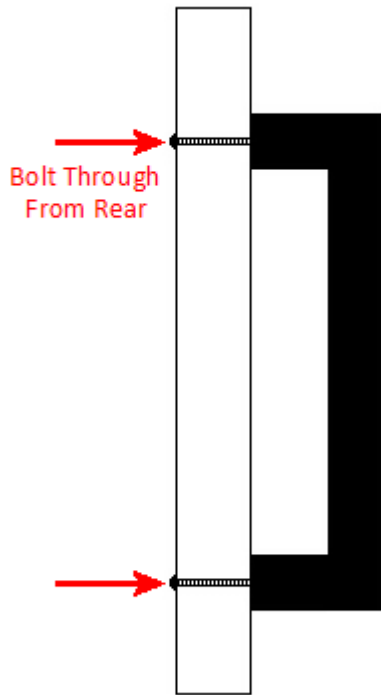
- Satin nickel - a warm grey colour with a very slight golden tint and visible brush marks in the surface of the item.
- Satin nickel is a very close match to satin stainless steel, ideal for use in kitchens.
- This item has been lacquered to help protect and maintain the satin nickel finish.

## Alternative Finishes Available

- Black nickel

## Fixings

- This handle is fitted via M4 bolts from the rear of the door / drawer - see below diagram.



- Comes supplied with M4 (diameter) x 25mm (long) bolts - Suitable for use on 18mm thick doors.
- For doors thicker than 18mm, longer M4 fixing bolts are available to buy separately. (See related products below.)

## Usage

- Suitable for internal or external use.

[external](#) use.

- For doors thicker than 18mm please purchase longer M4 fixing bolts. (See related products below.)

## Unit Of Sale

- This cabinet handle is sold individually - (Each)

## Products in this set

---



30279.1 - Square Section Cupboard Pull Handle - Satin Nickel - 128mm Bolt Centres - (143mm Overall) - Each



30279.2 - Square Section Cupboard Pull Handle - Satin Nickel - 160mm Bolt Centres - (175mm Overall) - Each



30279.3 - Square Section Cupboard Pull Handle - Satin Nickel - 192mm Bolt Centres - (207mm Overall) - Each



30279.4 - Square Section Cupboard Pull Handle - Satin Nickel - 224mm Bolt Centres - (239mm Overall) - Each



30279.5 - Square Section Cupboard Pull Handle - Satin Nickel - 320mm Bolt Centres - (335mm Overall) - Each



30279.6 - Square Section Cupboard Pull Handle - Satin Nickel - 448mm Bolt Centres - (463mm Overall) - Each