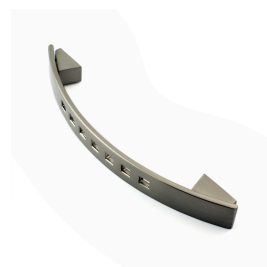

Quadra Bow Handle With Square Hole Design - 162mm Overall Length - Satin Nickel

Product Images





Description

- A bow shape cabinet handle with square holes cut into the top face.
- Suitable for use on kitchen cabinet doors, wardrobes, cupboard doors and drawers.
- Satin nickel (brushed finish.) - Satin nickel is a very close match to satin stainless steel ideal for use on kitchen cupboard doors.
- Comes supplied with M4 fixing bolts.

Size Details

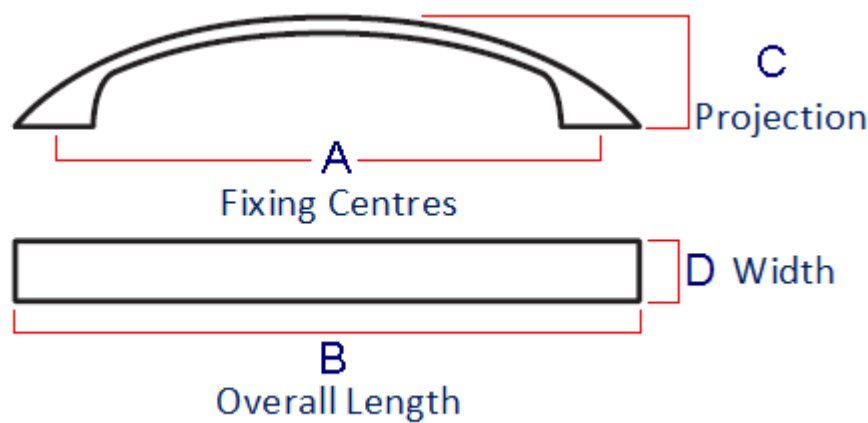


Diagram May Not Represent Actual Shape Of The Handle

Item Code	Bolt centers (A)	Overall Length (B)	Projection (C)	Width (D)
30309.1	128mm	162mm	29mm	17mm

Base Material

- Made from a zinc alloy.

Finish Details

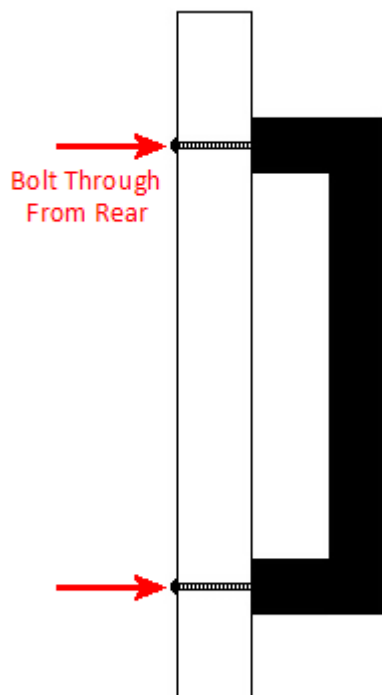
- Satin nickel - a warm grey colour with a very slight golden tint and visible brush marks in the surface of the item.
- Satin nickel is a very close match to satin stainless steel ideal for use in kitchens.
- This item has been lacquered to help protect and maintain the satin nickel finish.

Alternative Finishes Available

- Polished chrome - (shiny finish.)

Fixings

- This handle is fitted via M4 bolts from the rear of the door / drawer - see below diagram.



- Bolt through fixings provide a superior strong fixing allowing this handle to be fitted to tall or heavy doors.
- Comes supplied with M4 (diameter) x 60mm (long) bolts these long bolts are designed to be cut down to length on site.
- To save having to cut down the bolts provided we sell a range of M4 fixing bolts in various lengths. (See related products below.)

Usage

- Suitable for internal use.

Unit Of Sale

- This cabinet handle is sold individually - (Each)

Products in this set



30309.1 - Quadra Bow Handle With Square Hole Design - Satin Nickel - 128mm Bolt Centres - (162mm Overall) - Each