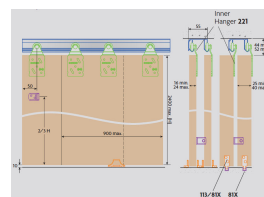
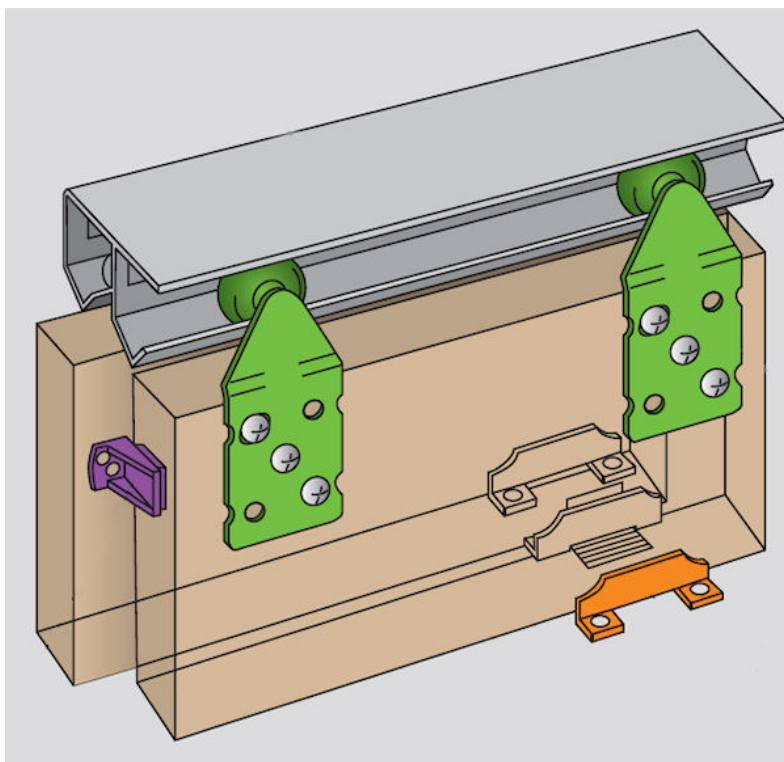


Double Top - Double Track Sliding Door Gear For Wardrobe & Cupboard Doors Up To 900mm Wide & 45kg In Weight

Product Images



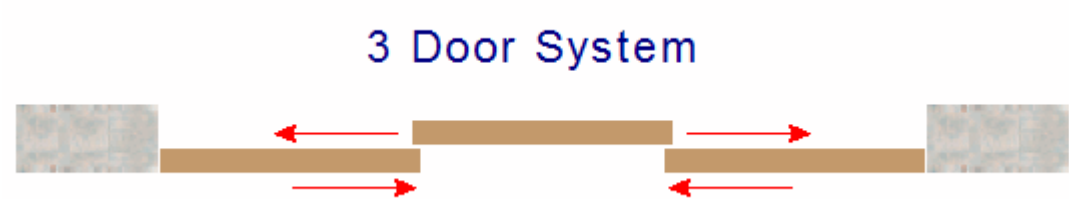
Description

- For heavy duty sliding door applications such as larger wardrobes and cupboards in hotels, schools, hospitals and offices, the Double Top is the ideal choice.
- Designed to support double track sliding timber, timber framed and composite doors of up to 45kg and 16-40mm in thickness, it works silently on nylon hangers and an aluminium track.
- Door heights can be adjusted easily, a floor guide can be added as an option, and a triple door kit can support openings of up to 2400mm.
- Each set includes all the main components needed to install long lasting, smooth running sliding doors.
- Aluminium pre-drilled track for a durable, long lasting finish and easy installation.
- Design for ceiling fixing only.
- Supplied with bottom guides.

Kits Available To Suit 2 Door Systems



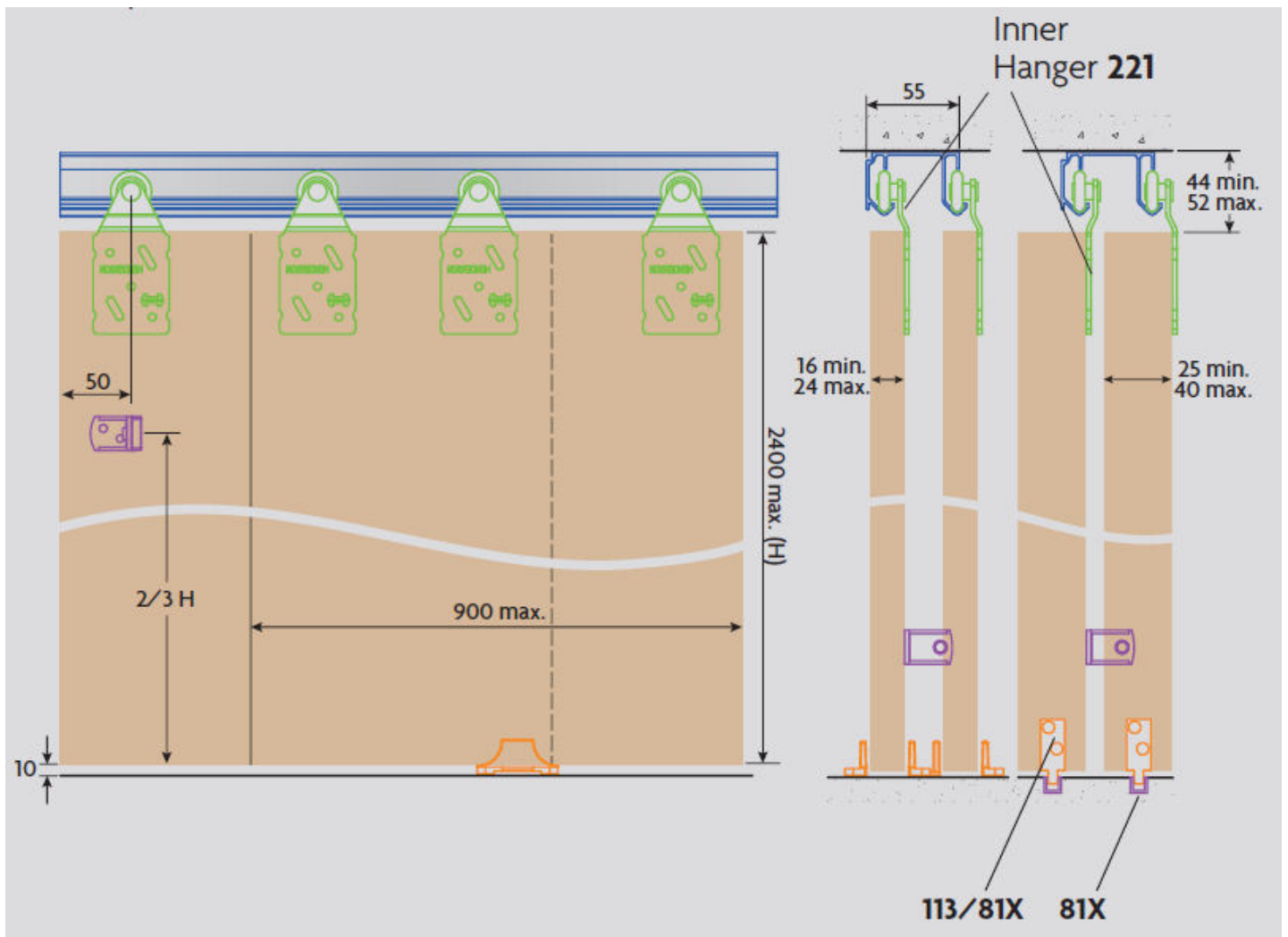
Kits Available To Suit 3 Door Systems



Track Lengths Available

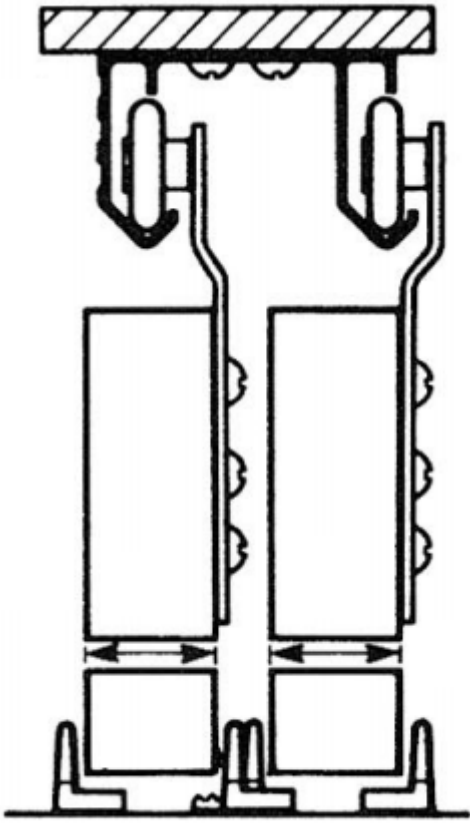
Item Code	Max Door Width	Overall Track Length (L)	To Suit No. Of Doors	Maximum Door Weight (W)	Minimum Door Thickness (T)	Max Door Thickness (T)
31274.1	600mm	1200mm	2	45kg	16mm	40mm
31274.2	750mm	1500mm	2	45kg	16mm	40mm
31274.3	900mm	1800mm	2	45kg	16mm	40mm
31274.4	800mm	2400mm	3	45kg	16mm	40mm

- Longer kits can be created by simply joining to kits "end on" (next to each other).



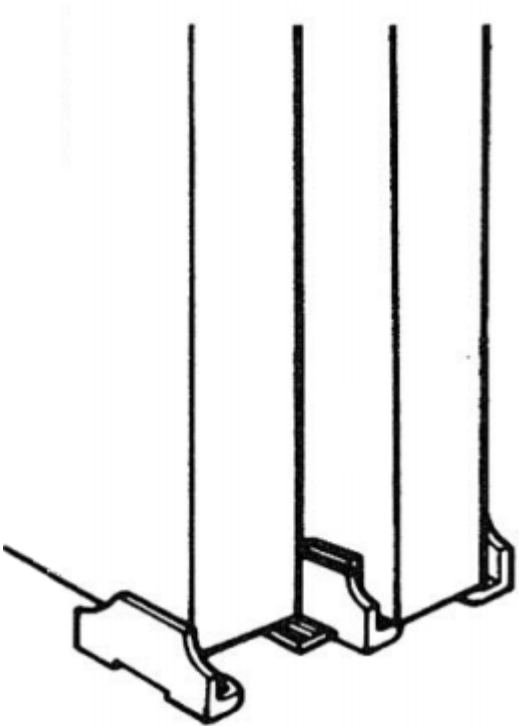
Fixing Options

- Pre-drilled aluminium track allows for fixing into the soffit or ceiling only.



Floor Guide

- The Henderson single top sliding door kit comes complete with a nylon floor guide, fixed to the floor next to the door frame, the door runs in between the guide to insure the door runs straight.



Items Included Within The Henderson Double Top Sliding Door Kit

- 1x Anti-Rise, Face/Soffit Aluminium Track
- 2x Outer Offset Hangers
- 2x Inner Offset Hangers
- 2x Reversible Hangers - (Supplied With W24 - 3 Door Kit Only)
- 1x Rubber-Buffered Stop - (2x Rubber-Buffered Stops Supplied With W24 - 3 Door Kit)
- 1x Nylon Floor Mounted Door Guide - (2x Nylon Floor Mounted Door Guides Supplied With W24 - 3 Door Kit)

Products in this set



31274.1 - Double Track Sliding Door Gear For Cupboard Doors Up To 600mm Wide - 1200mm Track Length - For 2 Doors



31274.2 - Double Track Sliding Door Gear For Cupboard Doors Up To 750mm Wide - 1500mm Track Length - For 2 Doors



31274.3 - Double Track Sliding Door Gear For Cupboard Doors Up To 900mm Wide - 1800mm Track Length - For 2 Doors



31274.4 - Double Track Sliding Door Gear For Cupboard Doors Up To 800mm Wide - 2400mm Track Length - For 3 Doors