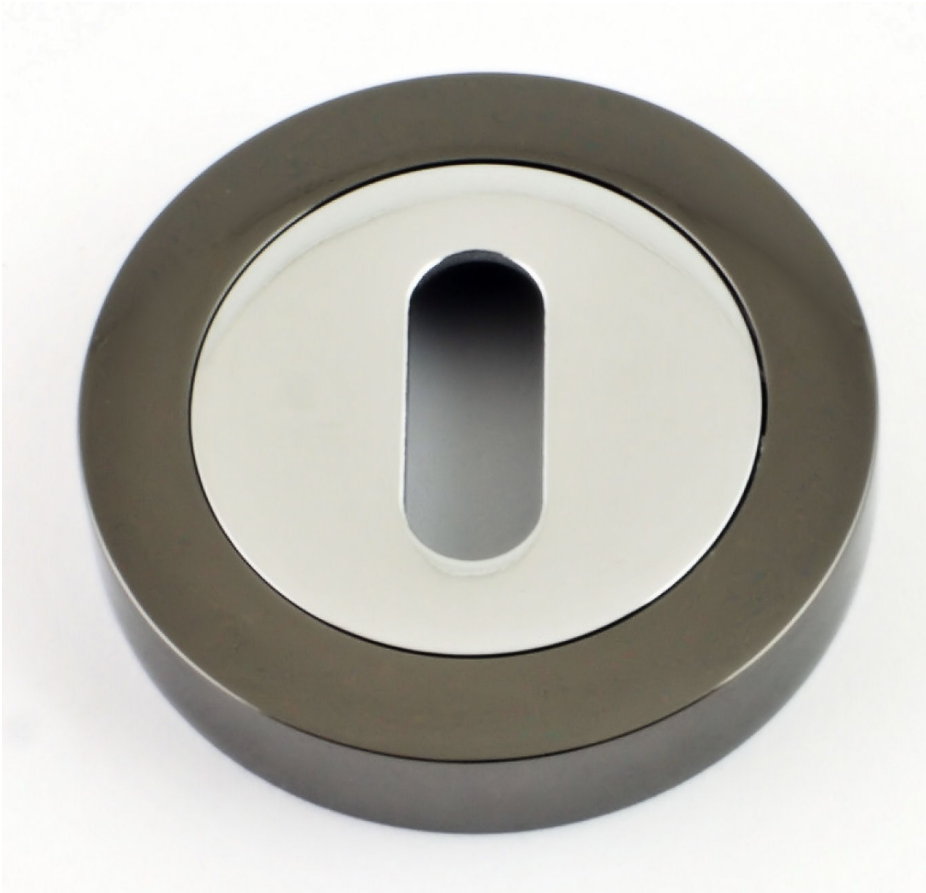

Standard Profile Round Escutcheon - Dual Finish - Polished Chrome & Black Nickel

Product Images



Description

- Standard Profile Round Escutcheon

Base Material

- Zinc Alloy

Finish

- Dual Finish
- Polished Chrome & Black Nickel

Dimensions

- 50mm Diameter
- 10mm Depth

Important Information

- Sold Individually (Each)

Products in this set



23102.1 - Standard Profile Round Escutcheon - Dual Finish - Polished Chrome & Black Nickel - Each