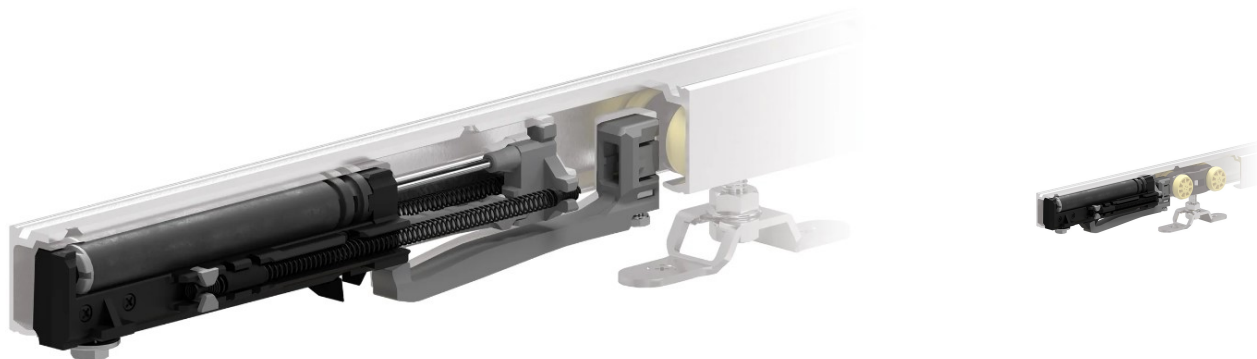


Soft Close Mechanism For Sliding Door Gear Systems

Product Images



Description

- Soft close mechanism for sliding door gear systems.
- This soft close pocket door mechanism is suitable for use with the **'60kg - 31268' / '120kg - 31269' / 'Glass - 31278' Sliding Door Gear**
- The soft close mechanism catches the door in the last few centimeters and gently pulls it into the fully closed position thus avoiding slamming which alleviates stress on the surrounding door frame and helps prevent finger traps.
- Suitable for doors up to 80 kg in weight.
- This piece of soft close pocket door hardware can be used on the closing side, opening side or both sides if two mechanisms are purchased.

Products in this set



40276.1 - Soft Close Mechanism For Sliding Door Gear Systems